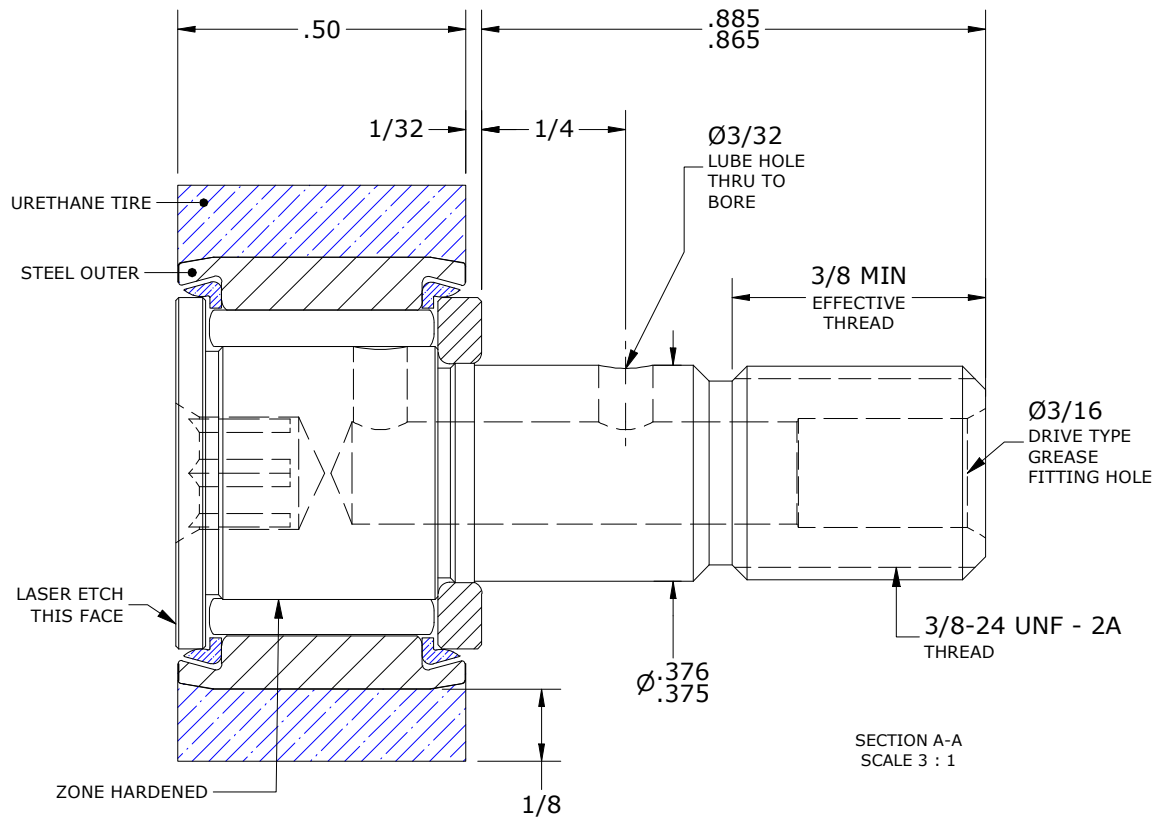
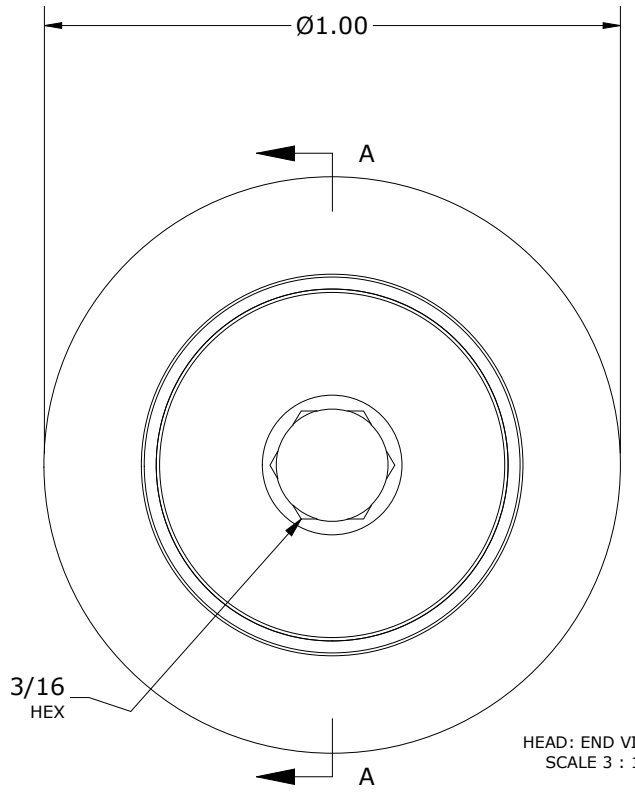
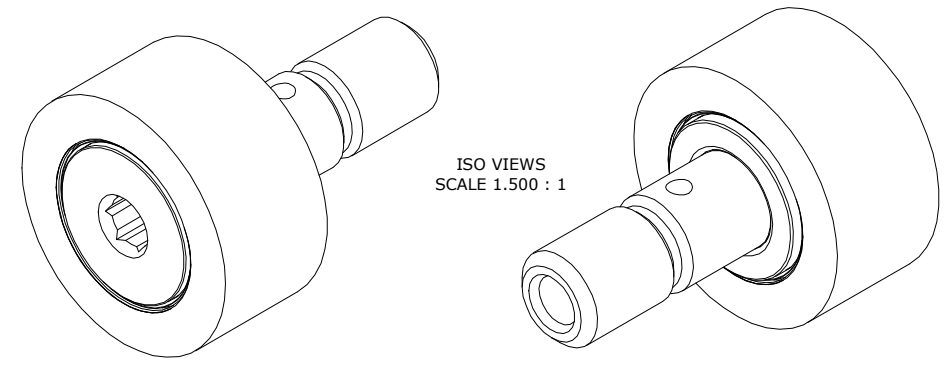


RECOMMENDED MOUNTING HOLE Ø		
Limit	Inch	mm
MIN	.3750	9.5250
MAX	.3755	9.5377

MAXIMUM CLAMPING TORQUE**		
Thread Type	Inch Lbs	Nm
LUBRICATED	47.5	5.5

- NOTES:
- BEARING IS PACKED WITH NLGI GRADE 2, LITHIUM BASED. GREASE UNLESS OTHERWISE SPECIFIED.
 - URETHANE SPECIFICATIONS:
 - DUROMETER = 80 SHORE A.
 - COLOR = BLUE.
 - ALL EXPOSED STEEL SURFACES HAVE BLACK OXIDE.
 - CUSTOM LASER ETCHING IS AVAILABLE UPON REQUEST.



**TORQUE SPECIFICATION IS BASED ON LUBRICATED THREADS, IF USING DRY THREADS DOUBLE TORQUE VALUE

MATERIAL NOTES:

OUTER TIRE - URETHANE
 OUTER RING - BEARING STEEL, HEAT TREATED
 STUD - BEARING STEEL, ZONE HARDENED
 NEEDLE ROLLER(S) - BEARING STEEL, HEAT TREATED
 WASHER - BEARING STEEL, HEAT TREATED
 SEAL(S) - SYNTHETIC

CUSTOMER PART#	XX = ± .01 XXX = ± .005 XXXX = ± .0005 ANGLES = ± 1' INCH [METRIC] FRACTION = ± 1/32
ENGINEERING CHANGE ORDER NOTE	

CARTER MANUFACTURING IS NOT RESPONSIBLE FOR TYPOGRAPHICAL ERRORS				CARTER MANUFACTURING CO., INC. GRAND HAVEN, MICHIGAN 49417			
REVISION				PART NAME: Assembly		PRODUCT TYPE: CRT	
B	AUTHOR BY HG	DRAWN BY SGW	CHK'D BY MD	SALES NC	MATERIAL NOTED		
REVISION BY SGW	DATE 6/4/2020	DATE 10/9/2007	DATE 5/29/2020	DATE 6/4/2020	SHEET 1 OF 2		