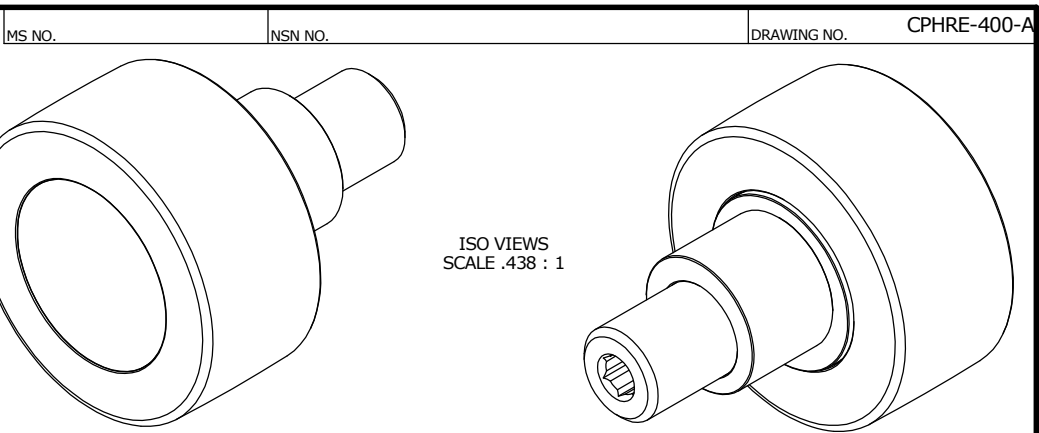
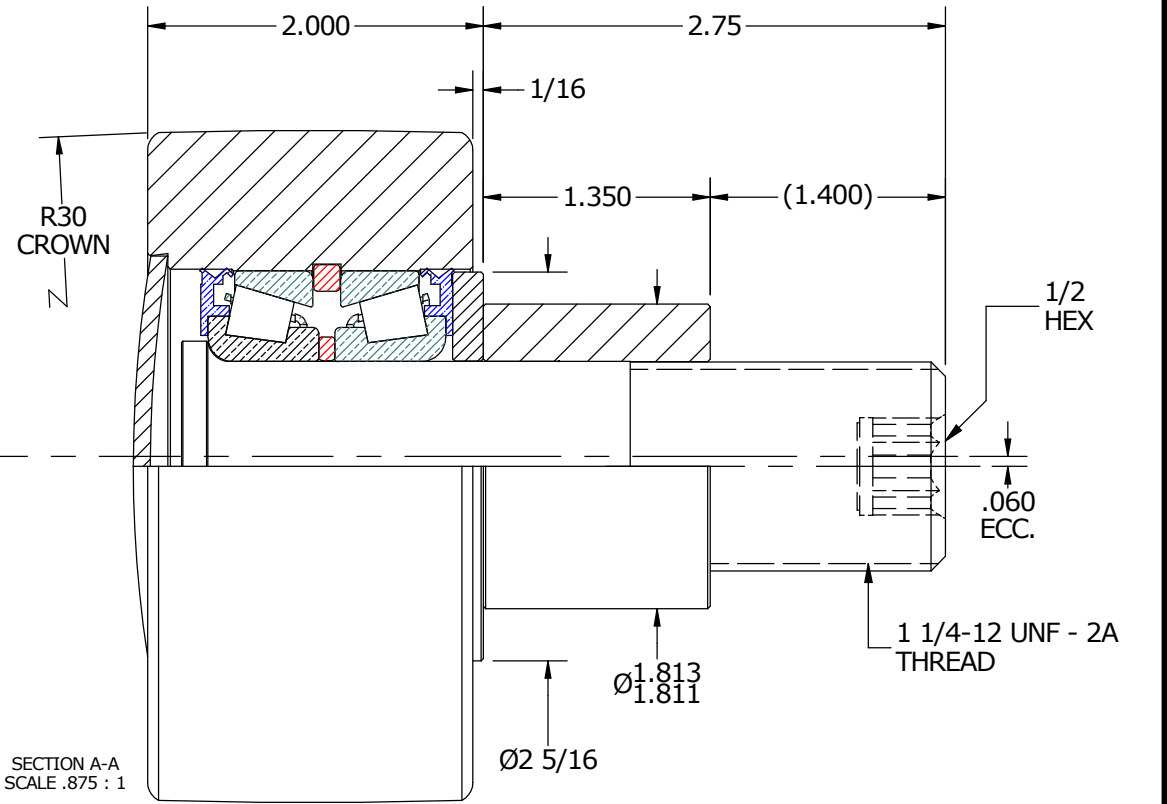
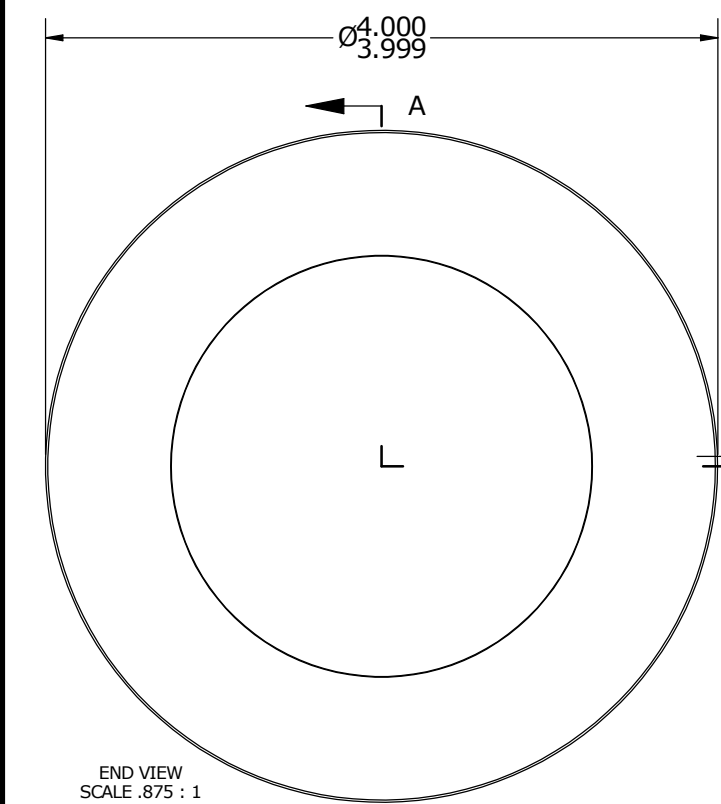


LOAD RATINGS	
RATING	Lbs
RADIAL BASIC DYNAMIC [C]	14,200
DYNAMIC THRUST LOAD	13,000
MAXIMUM STATIC CAPACITY [Co]	26,000

- NOTES:
- BEARING IS PACKED WITH NLGI GRADE 2,LITHIUM BASED GREASE
 - ALL STEEL PARTS EXCEPT OUTER: ALL EXPOSED SURFACES HAVE BLACK OXIDE



MATERIAL NOTES: OUTER ROLLER - BEARING STEEL, HEAT TREATED STUD - COLD ROLLED STEEL BEARING ASSY - LM67000A WASHER - COLD ROLLED STEEL END CAP - COLD ROLLED STEEL ECCENTRIC SLEEVE - COLD ROLLED STEEL SEAL - LM67048	CUSTOMER PART#	XX = ± .01 XXX = ± .005 XXXX = ± .0005 ANGLES = ± 1' INCH [METRIC] FRACTION = ± 1/32	CARTER MANUFACTURING IS NOT RESPONSIBLE FOR TYPOGRAPHICAL ERRORS		CARTER MANUFACTURING CO., INC. GRAND HAVEN, MICHIGAN 49417			
			REVISION		PART NAME: ASSEMBLY			
	ENGINEERING CHANGE ORDER NOTE		A	AUTHOR BY	DRAWN BY	CHK'D BY	SALES	MATERIAL
				HG	SGW	MD	KR	NOTED
			REVISION BY	DATE	DATE	DATE	DATE	SHEET
		SGW	10/6/2015	10/5/2015	10/6/2015	10/5/2015	1 OF 2	