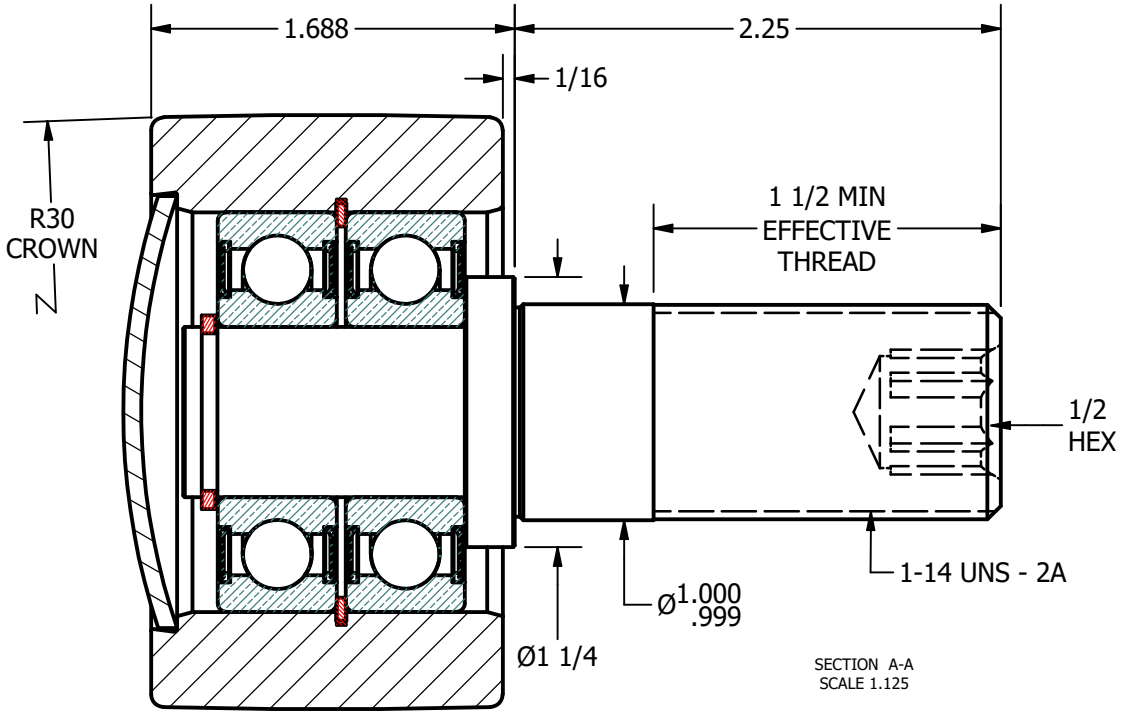
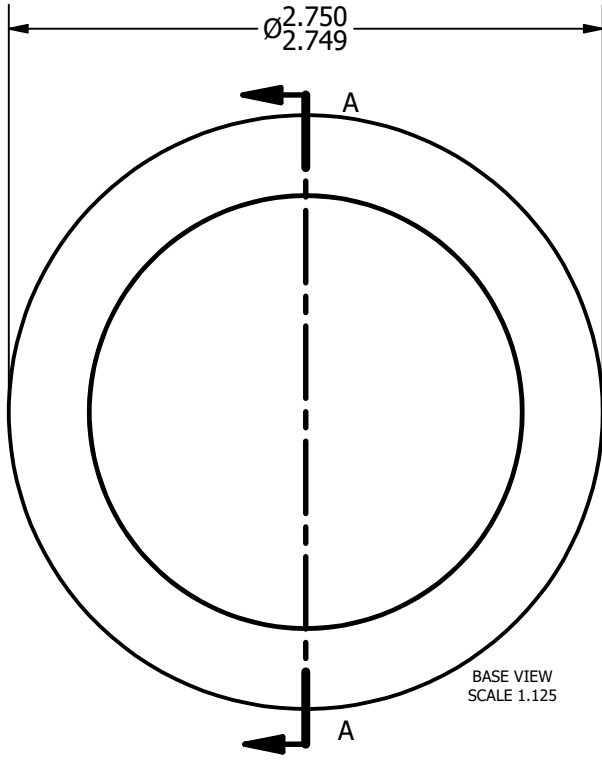
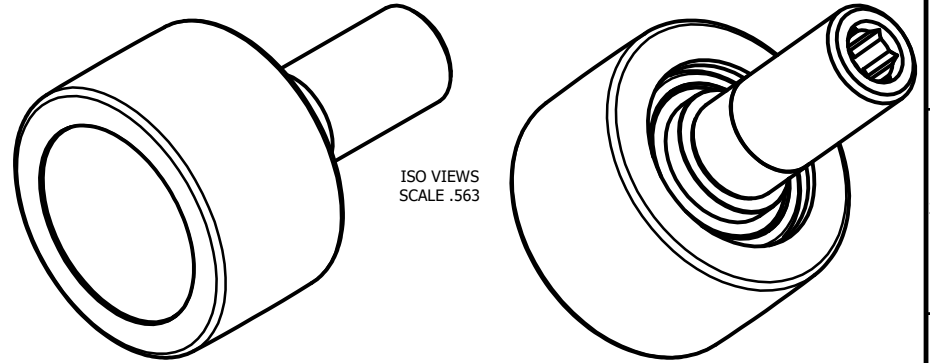


LOAD RATINGS	
RATING	Lbs
RADIAL BASIC DYNAMIC	5,190
DYNAMIC THRUST LOAD	2,660
MAXIMUM STATIC CAPACITY	2,220

NOTES:
1. BALL BEARINGS COME PRE-PACKED WITH GREASE

W/SW NO. _____ DRAWING NO. CPHR-275-A



MATERIAL NOTES:
 OUTER - BEARING STEEL, HEAT TREATED
 STUD - COLD ROLLED STEEL
 END CAP - COLD ROLLED STEEL
 BEARING ASSEMBLY - 6204-2RS
 RETAINING RINGS - SPRING STEEL

CUSTOMER PART#	.XX = ± .01 .XXX = ± .005 .XXXX = ± .0005 ANGLES = ± 1' INCH [METRIC]
CHANGE NOTE:	

CARTER MANUFACTURING IS NOT RESPONSIBLE FOR TYPOGRAPHICAL ERRORS	
REVISION	
A	AUTHOR. BY
	DATE
SGW	11/20/2007

CARTER MANUFACTURING CO., INC.					
GRAND HAVEN, MICHIGAN 49417					
PART NAME: ASSEMBLY			SHEET 1 OF 2		
	AUTHOR. BY	DRAWN BY	CHK'D BY	SALES	MATERIAL
	JGV	SGW	JGV	KPR	NOTED
	DATE	DATE	DATE	DATE	DRAWING NO.
	11/20/2007	9/27/2007	11/20/2007	11/20/2007	CPHR-275-A