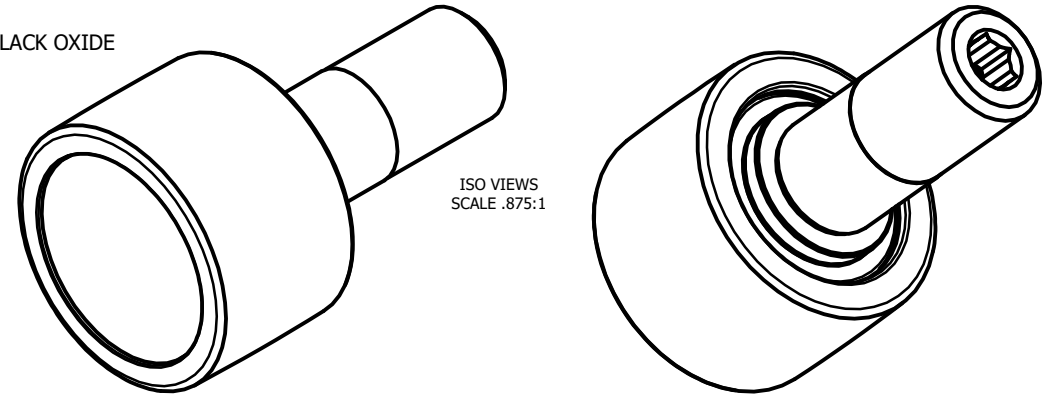
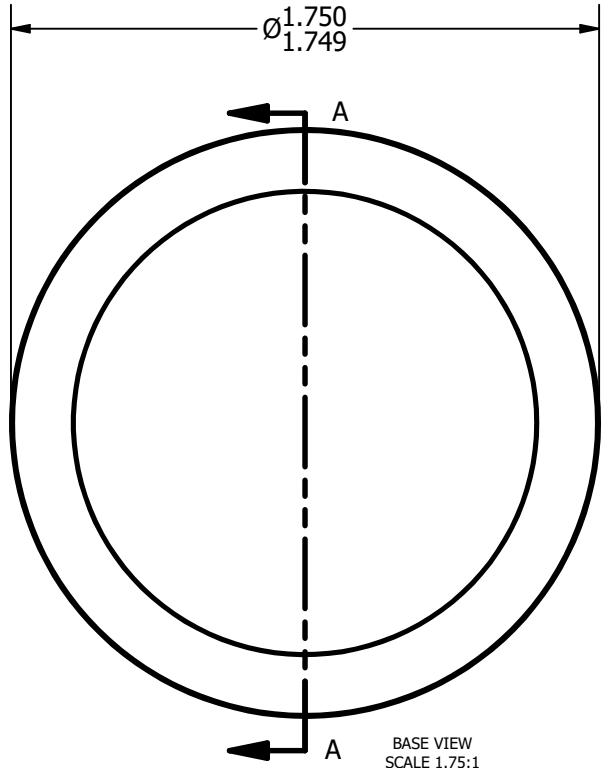


LOAD RATINGS	
RATING	Lbs
RADIAL BASIC DYNAMIC	2,380
DYNAMIC THRUST LOAD	1,880
MAXIMUM STATIC CAPACITY	1,300

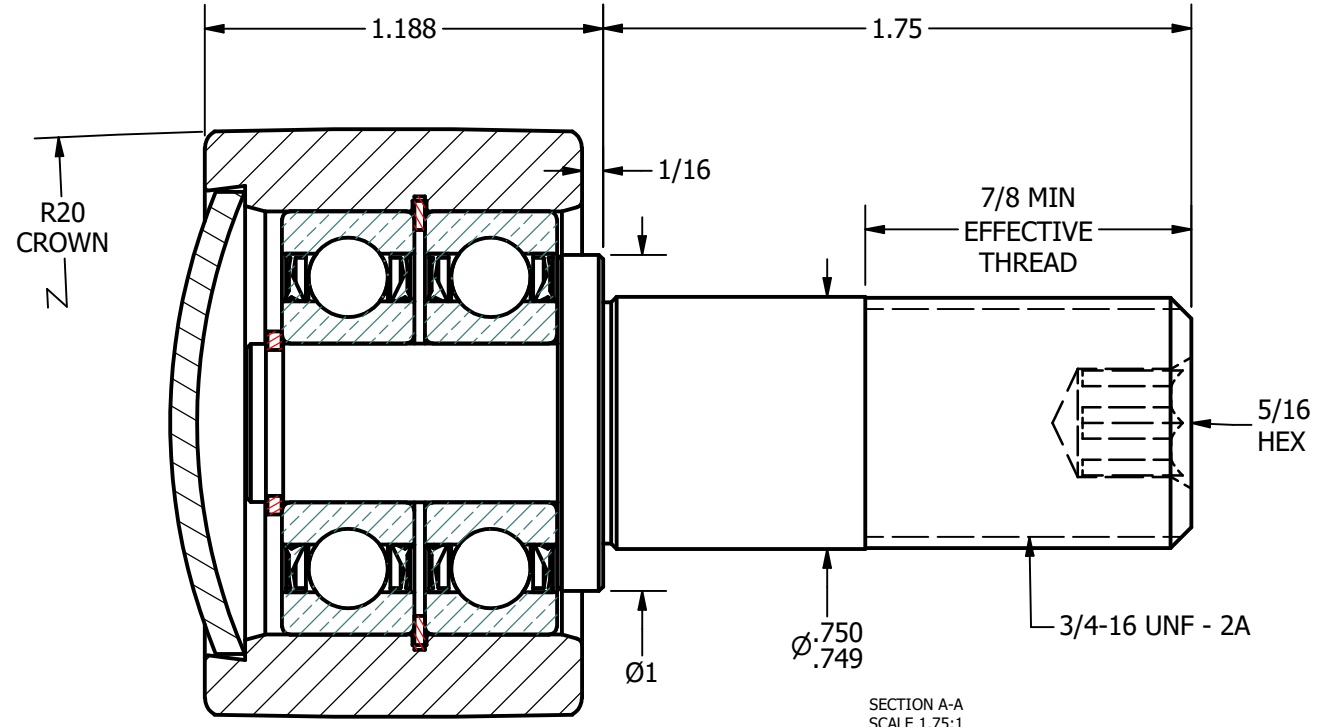
- NOTES:
 1. BALL BEARING COMES PRE-PACKED WITH GREASE
 2. STUD & END CAP: ALL EXPOSED SURFACES HAVE BLACK OXIDE



ISO VIEWS
 SCALE .875:1



BASE VIEW
 SCALE 1.75:1



SECTION A-A
 SCALE 1.75:1

MATERIAL NOTES:
 OUTER - BEARING STEEL, HEAT TREATED
 STUD - STRESSPROOF
 END CAP - COLD ROLLED STEEL
 BEARING ASSEMBLIES - 6201 2RS
 RETAINING RINGS - SPRING STEEL

CUSTOMER PART#	.XX = ± .01 .XXX = ± .005 .XXXX = ± .0005 ANGLES = ± 1° INCH [METRIC]
CHANGE NOTE:	

CARTER MANUFACTURING IS NOT RESPONSIBLE FOR TYPOGRAPHICAL ERRORS

REVISION	
B	AUTHOR. BY DB
REV. BY	DATE
SGW	8/14/2012

CARTER MANUFACTURING CO., INC.
 GRAND HAVEN, MICHIGAN 49417

PART NAME: ASSEMBLY					SHEET 1 OF 2
SALES	MATERIAL	CHK'D BY	DRAWN BY	AUTHOR. BY	REV. BY
KR	NOTED	MD	JGV	DB	SGW
DATE	DRAWING NO.	DATE	DATE	DATE	DATE
8/14/2012	CPHR-175-A	8/14/2012	11/4/2004	8/14/2012	8/14/2012