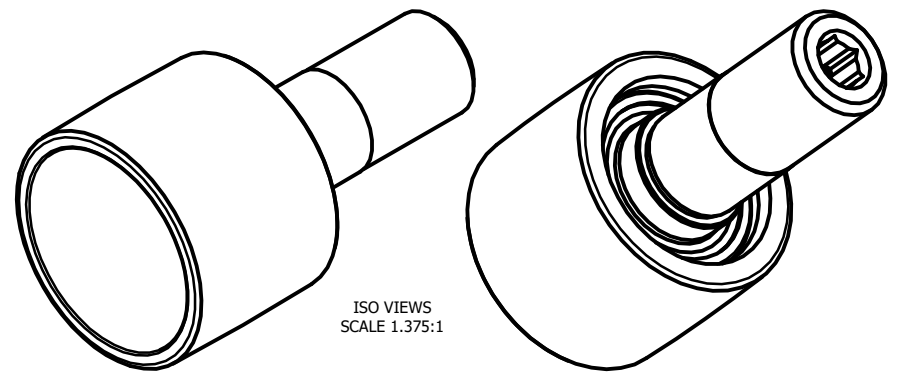
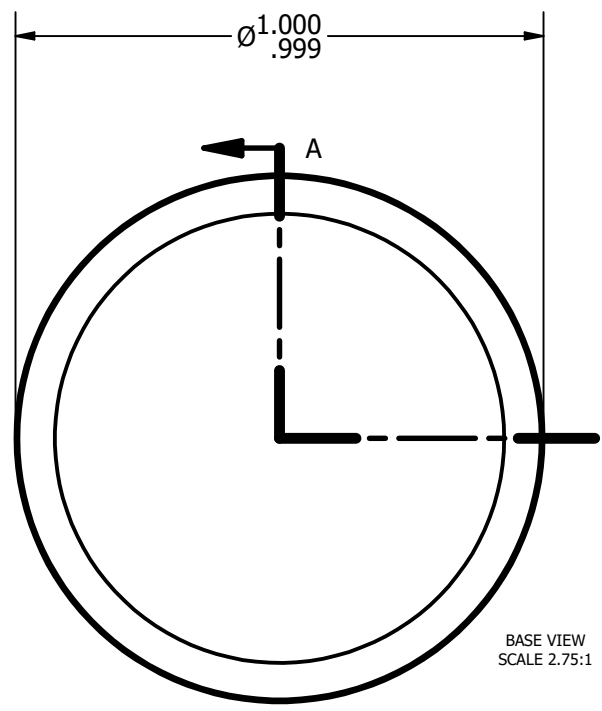


LOAD RATINGS	
RATING	Lbs
RADIAL BASIC DYNAMIC	630
STATIC THRUST LOAD	140
MAXIMUM STATIC CAPACITY	230

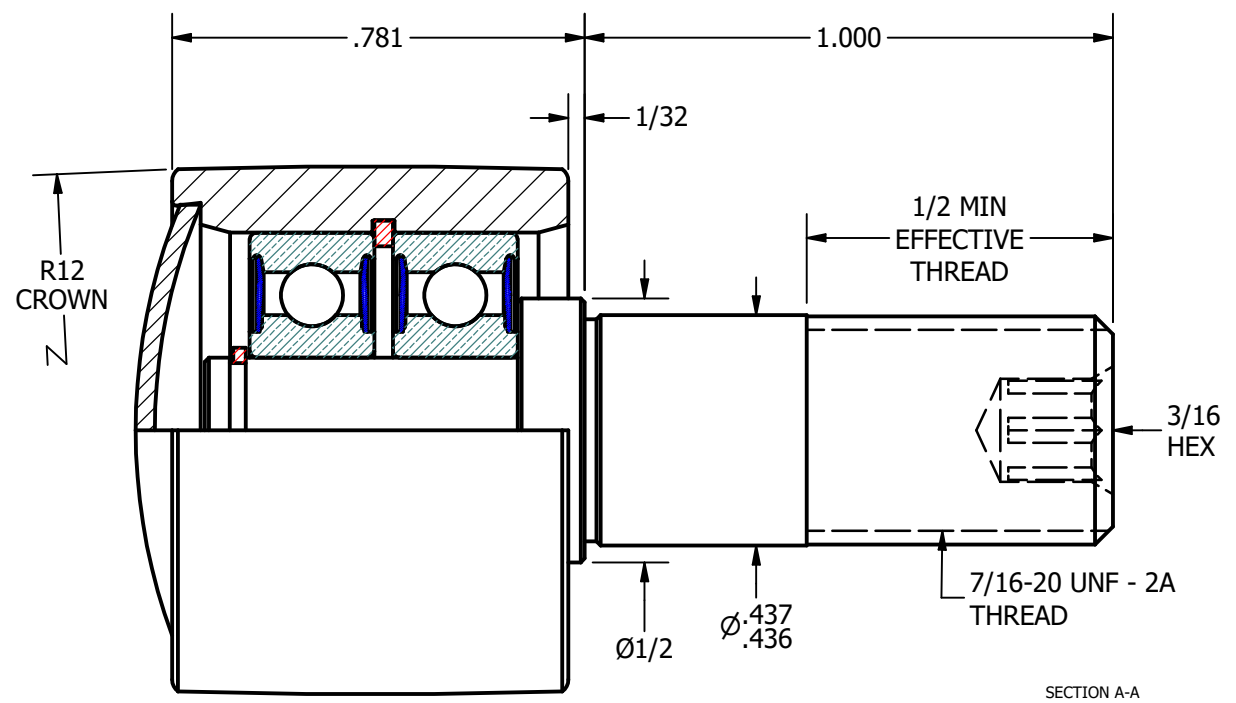
NOTES:  
 1. BALL BEARINGS COME PRE-PACKED WITH GREASE  
 2. STUD & END CAP: BLACK OXIDE ON ALL EXPOSED SURFACES



ISO VIEWS  
 SCALE 1.375:1



BASE VIEW  
 SCALE 2.75:1



SECTION A-A  
 SCALE 2.75:1

**MATERIAL NOTES:**  
 OUTER ROLLER- BEARING STEEL, HEAT TREATED  
 STUD - COLD ROLLED STEEL  
 BEARING ASSY. - 607.2RS  
 SNAP RINGS - SPRING STEEL  
 END CAP - COLD ROLLED STEEL

CUSTOMER PART#	.XX = ± .01 .XXX = ± .005 .XXXX = ± .0005 ANGLES = ± 1' INCH [METRIC] FRACTION = ± 1/32
CHANGE NOTE:	

CARTER MANUFACTURING IS NOT RESPONSIBLE FOR TYPOGRAPHICAL ERRORS

REVISION	
<b>A</b>	<b>AUTHOR. BY</b> DB
<b>REV. BY</b>	<b>DATE</b>
SGW	6/15/2012

**CARTER MANUFACTURING CO., INC.**  
 GRAND HAVEN, MICHIGAN 49417

PART NAME: ASSEMBLY					SHEET 1 OF 2
SALES	MATERIAL	CHK'D BY	DRAWN BY	AUTHOR. BY	REV. BY
KR	NOTED	MD	SGW	DB	SGW
DATE	DRAWING NO.	DATE	DATE	DATE	DATE
6/15/2012	CPHR-100-A	6/15/2012	6/15/2012	6/15/2012	6/15/2012