

LOAD RATINGS

RATING	lbf	Newtons
RADIAL BASIC DYNAMIC	11,720	52,133
MAXIMUM STATIC CAPACITY	32,900	146,346

RECOMMENDED MOUNTING HOLE Ø

Limit	Inch	mm
MIN	1.2500	31.7500
MAX	1.2505	31.7627

MAXIMUM CLAMPING TORQUE

Thread Type	Inch lbf	Nm
DRY	3,450	390
LUBRICATED	1,725	195

MS NO.

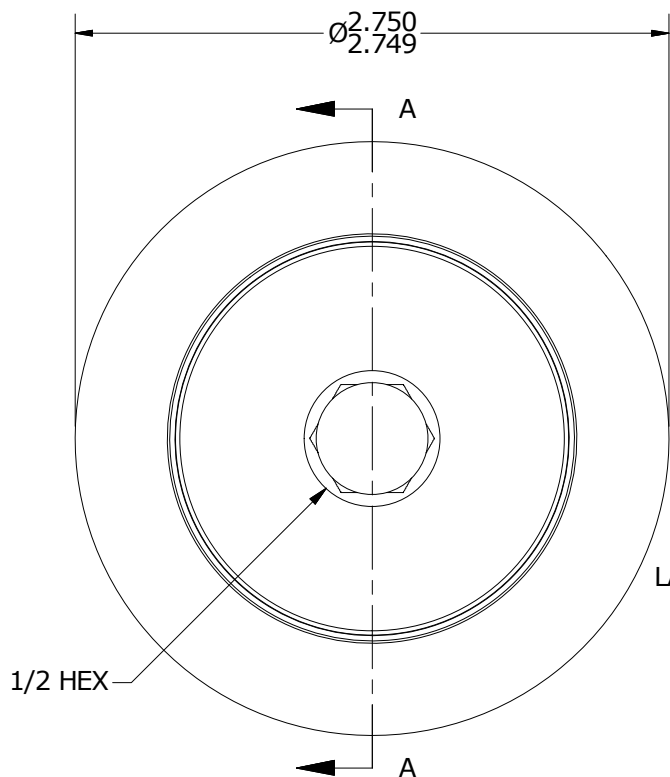
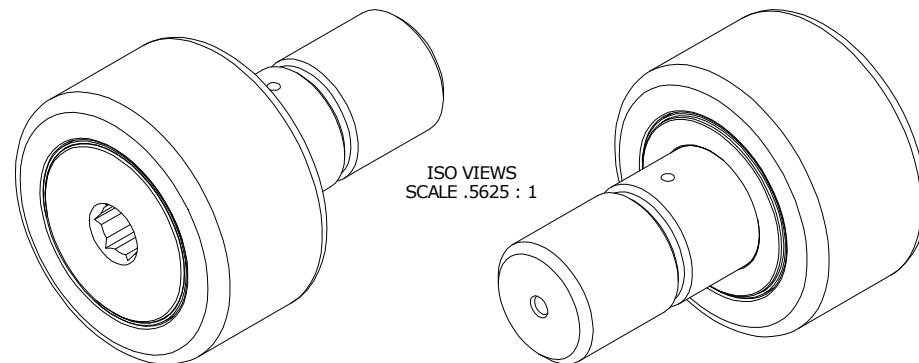
NSN NO.

DRAWING NO.

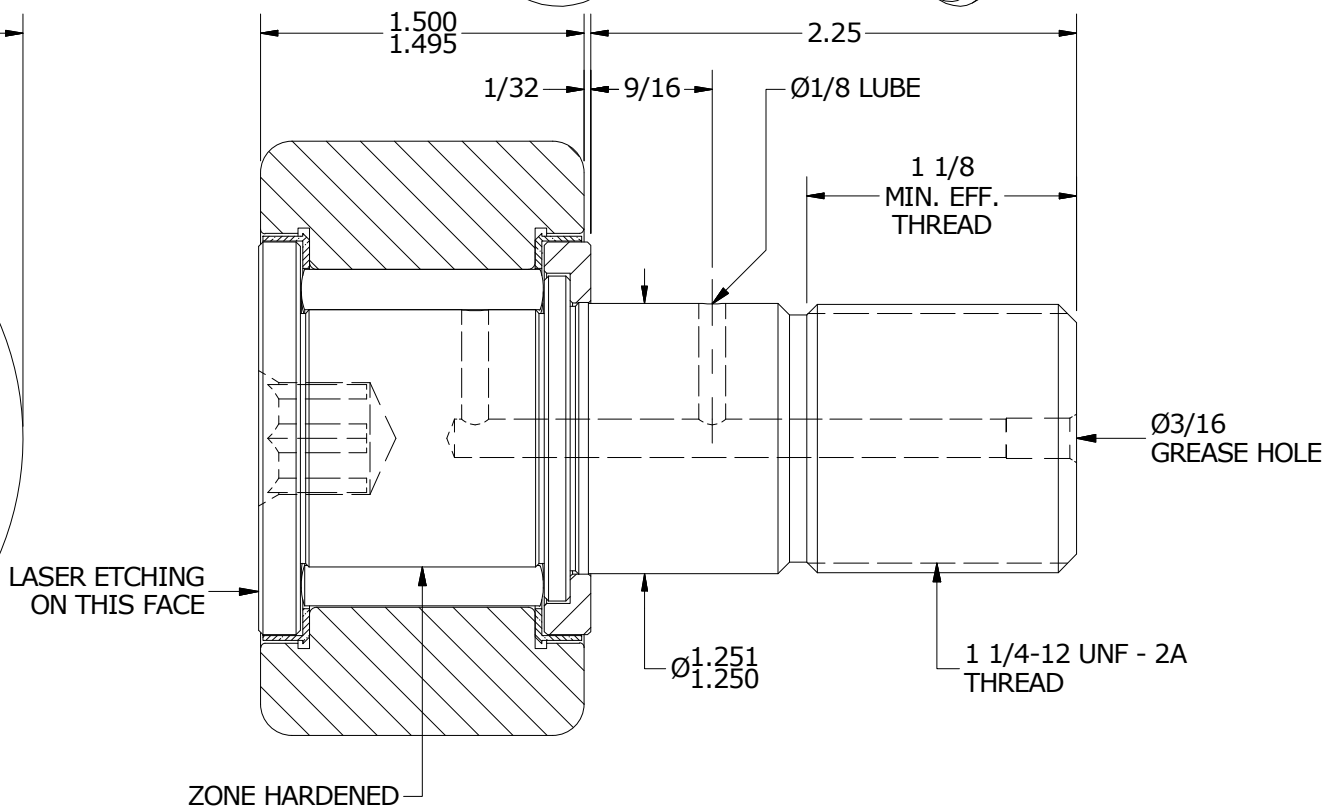
CNBH-88-SB

NOTES:

1. BEARING IS PACKED WITH NLGI GRADE 2, LITHIUM BASED GREASE UNLESS OTHERWISE SPECIFIED
2. ALL EXPOSED SURFACES HAVE BLACK OXIDE
3. CUSTOM LASER ETCHING AVAILABLE UPON REQUEST
4. LIMITING SPEED:
 - A. GREASE = 1,050 RPM



END VIEW
SCALE 1.125 : 1



SECTION A-A
SCALE 1.125 : 1

MATERIAL NOTES:

- OUTER RING - BEARING STEEL, HEAT TREATED
- STUD - BEARING STEEL, ZONE HARDENED
- NEEDLE ROLLERS - BEARING STEEL, HEAT TREATED
- WASHER - STEEL, HEAT TREATED
- SEALS - SYNTHETIC

CUSTOMER PART#

XX = ± .01
XXX = ± .005
XXXX = ± .0005
ANGLES = ± 1'
INCH [METRIC]
FRACTION = ± 1/32

CARTER MANUFACTURING IS
NOT RESPONSIBLE FOR
TYPOGRAPHICAL ERRORS

CARTER MANUFACTURING CO., INC.

GRAND HAVEN, MICHIGAN 49417

ENGINEERING CHANGE ORDER NOTE

REVISION

PART NAME: Assembly

PRODUCT TYPE: CNBH

B

AUTHOR BY
HG

DRAWN BY
EMD

CHK'D BY
SGW

SALES
KPR

MATERIAL
NOTED

REVISION BY
MD

DATE
12/17/2018

DATE
7/11/2006

DATE
12/17/2018

DATE
7/11/2006

SHEET
1 OF 2