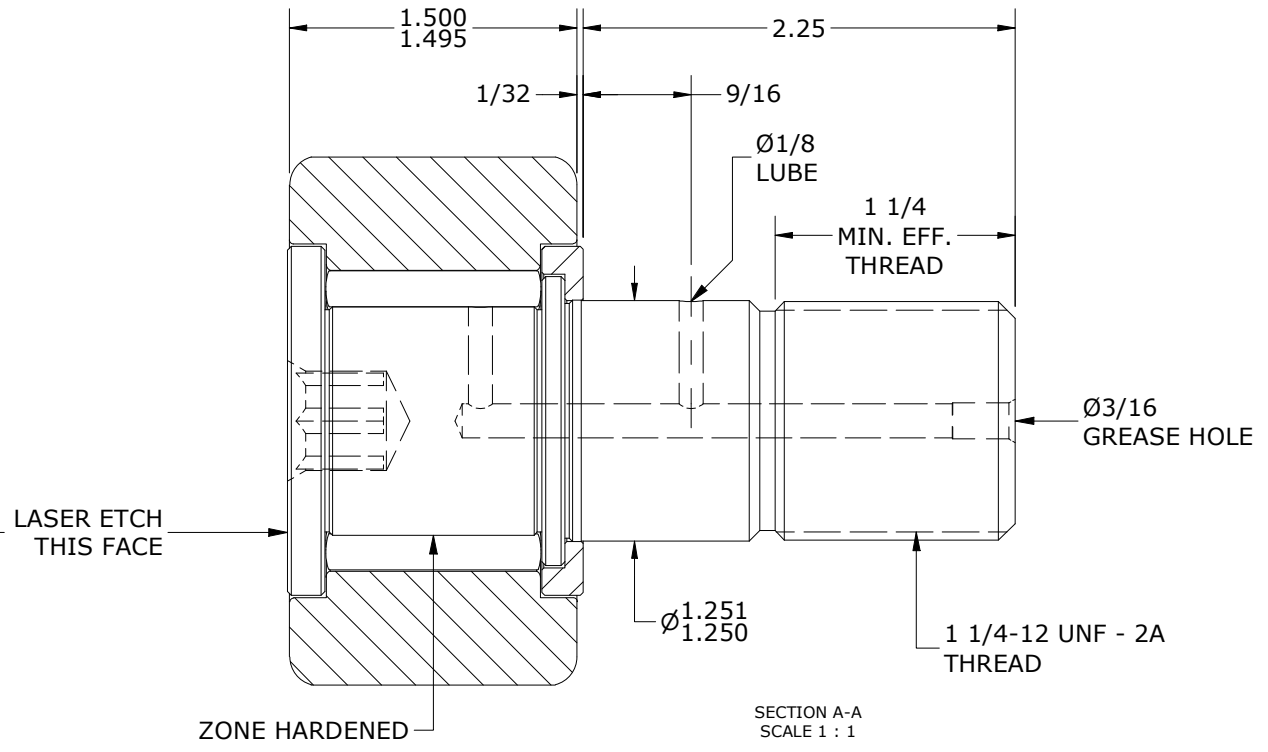
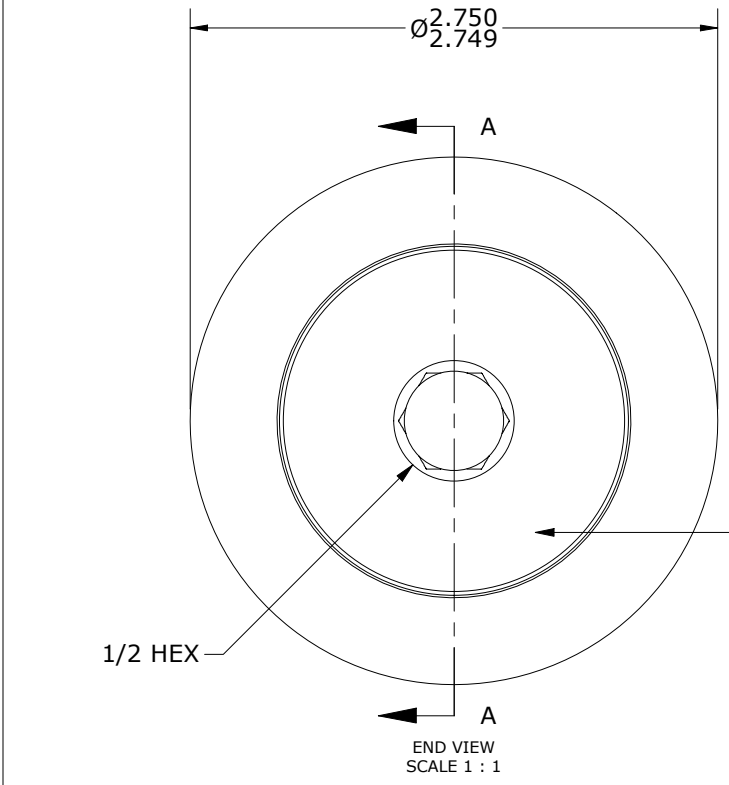
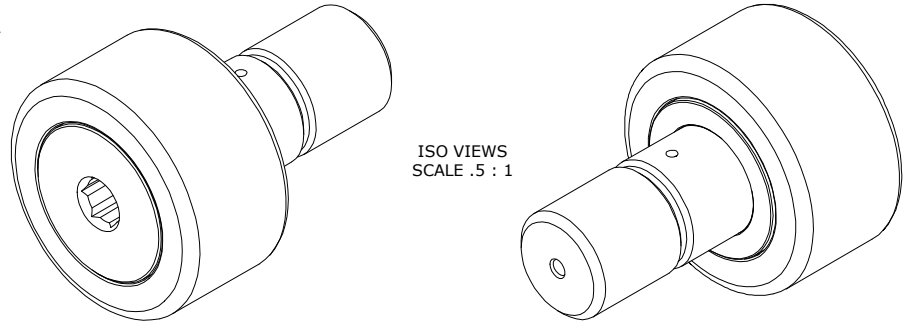


LOAD RATINGS		
RATING	Lbs	Newtons
RADIAL BASIC DYNAMIC	11,720	52,133
MAXIMUM STATIC CAPACITY	32,900	146,346

RECOMMENDED MOUNTING HOLE DIA.		
Limit	Inch	mm
MIN	1.2500	31.7500
MAX	1.2505	31.7627

MAXIMUM CLAMPING TORQUE		
Thread Type	Inch Lbf	Nm
DRY	3,450	390
LUBRICATED	1,725	195

- NOTES:
- BEARING IS PACKED WITH NLGI GRADE 2, LITHIUM BASED GREASE UNLESS OTHERWISE SPECIFIED
 - ALL EXPOSED SURFACES HAVE BLACK OXIDE FINISH
 - CUSTOM LASER ETCHING AVAILABLE UPON REQUEST
 - LIMITING SPEED:
 - A. GREASE = 1,100 RPM



MATERIAL NOTES:

OUTER RING - BEARING STEEL, HEAT TREATED
 STUD - BEARING STEEL, ZONE HARDENED
 NEEDLE ROLLERS - BEARING STEEL, HEAT TREATED
 WASHER - STEEL, HEAT TREATED

CUSTOMER PART#	XX = ± .01 XXX = ± .005 XXXX = ± .0005 ANGLES = ± 2' INCH [METRIC] FRACTION = ± 1/64
ENGINEERING CHANGE ORDER NOTE	

CARTER MANUFACTURING IS NOT RESPONSIBLE FOR TYPOGRAPHICAL ERRORS				CARTER MANUFACTURING CO., INC. GRAND HAVEN, MICHIGAN 49417			
REVISION		PART NAME: Assembly		PRODUCT TYPE: CNBH			
B	AUTHOR BY HG	DRAWN BY EMD	CHK'D BY SGW	SALES KPR	MATERIAL NOTED		
REVISION BY MD	DATE 5/1/2023	DATE 7/11/2006	DATE 5/1/2023	DATE 7/10/2006	SHEET 1 OF 2		