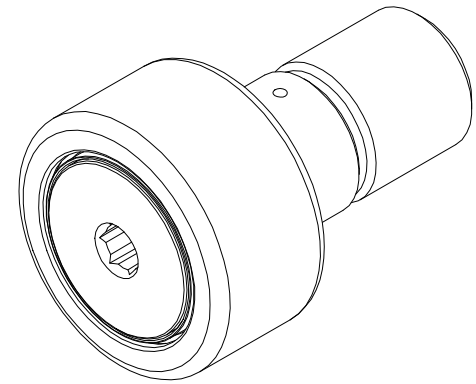


LOAD RATINGS		
RATING	lbf	Newtons
RADIAL BASIC DYNAMIC	6,385	28,402
MAXIMUM STATIC CAPACITY	15,840	70,460

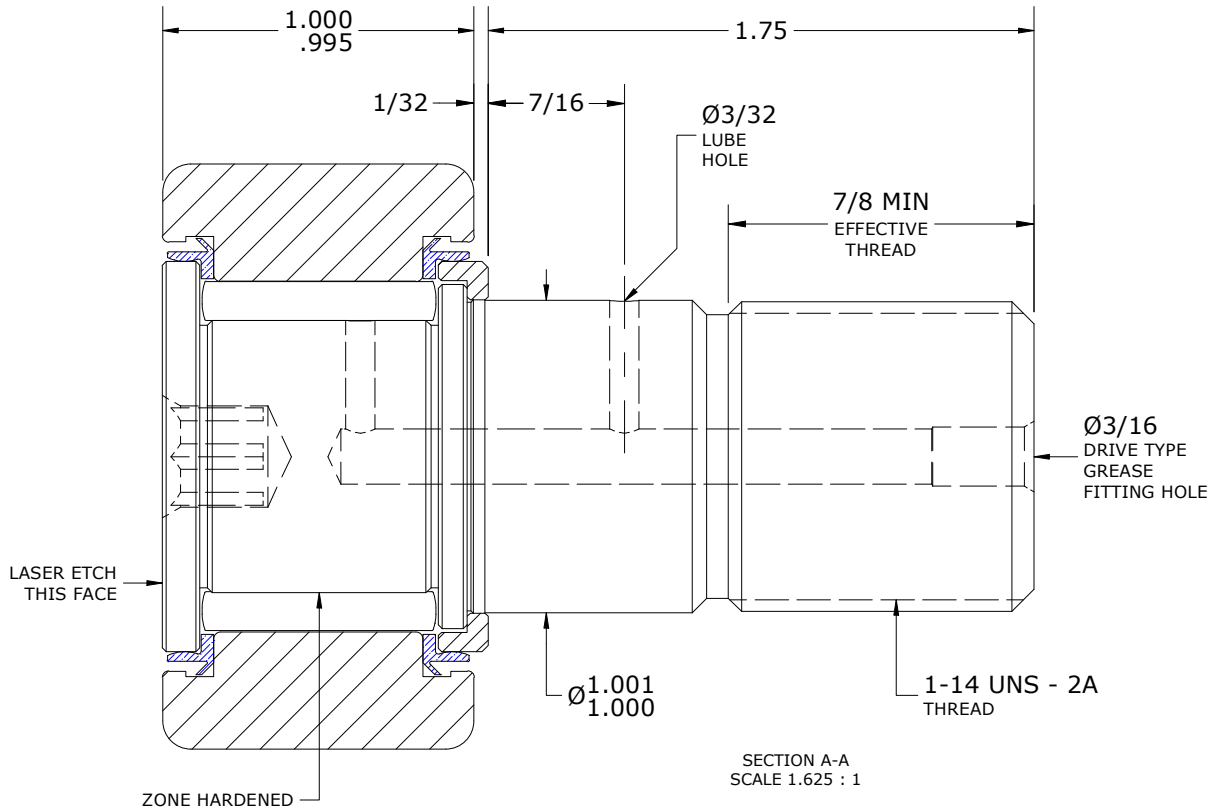
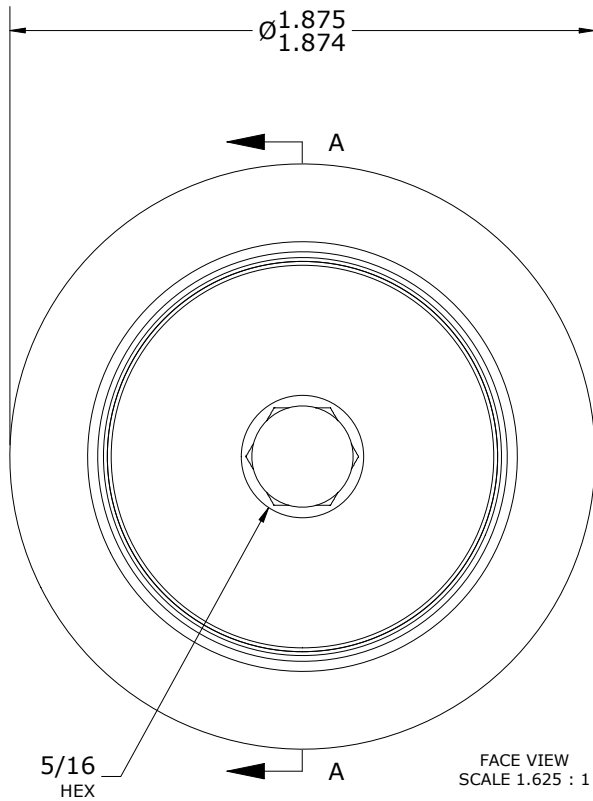
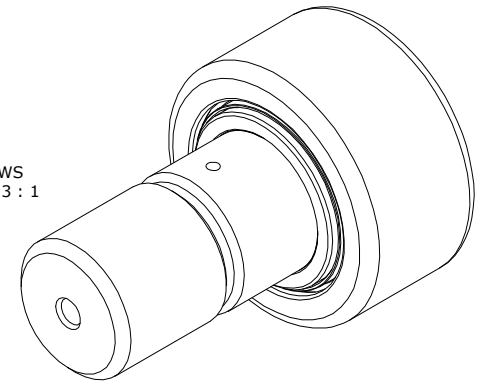
- NOTES:
1. BEARING IS PACKED WITH NLGI GRADE 2, LITHIUM BASED GREASE (UNLESS OTHERWISE SPECIFIED)
 2. ALL EXPOSED STEEL SURFACES HAVE BLACK OXIDE
 3. CUSTOM LASER ETCHING UPON REQUEST
 4. LIMITING SPEED:
A. GREASE = 2,000 RPM

RECOMMENDED MOUNTING HOLE Ø		
Limit	Inch	mm
MIN	1.0000	25.4000
MAX	1.0005	25.4127

MAXIMUM CLAMPING TORQUE**		
Thread Type	Inch lbf	Nm
LUBRICATED	1,125	127



ISO VIEWS
SCALE .813 : 1



** (TORQUE SPECIFICATION IS BASED ON LUBRICATED THREADS, IF USING DRY THREADS DOUBLE TORQUE VALUE)

MATERIAL NOTES:

OUTER RING - BEARING STEEL, HEAT TREATED

STUD - BEARING STEEL, ZONE HARDENED

NEEDLE ROLLER(S) - BEARING STEEL, HEAT TREATED

WASHER - BEARING STEEL, HEAT TREATED

SEAL(S) - SYNTHETIC

CUSTOMER PART#	XX = ± .01 XXX = ± .005 XXXX = ± .0005 ANGLES = ± 2' INCH [METRIC] FRACTION = ± 1/64
ENGINEERING CHANGE ORDER NOTE	
CARTER STANDARD SURFACE FINISH IS MEASURED IN "Ra" UNITS UNLESS OTHERWISE SPECIFIED.	

CARTER MANUFACTURING IS NOT RESPONSIBLE FOR TYPOGRAPHICAL ERRORS				CARTER MANUFACTURING CO., INC. GRAND HAVEN, MICHIGAN 49417			
REVISION				PART NAME: Assembly		PRODUCT TYPE: Standard HD	
D	AUTHOR BY HG	DRAWN BY GJP	CHK'D BY MD	SALES NC	MATERIAL NOTED		
REVISION BY DJB	DATE 8/23/2023	DATE 8/14/2000	DATE 8/23/2023	DATE 8/23/2023	SHEET 1 OF 2		