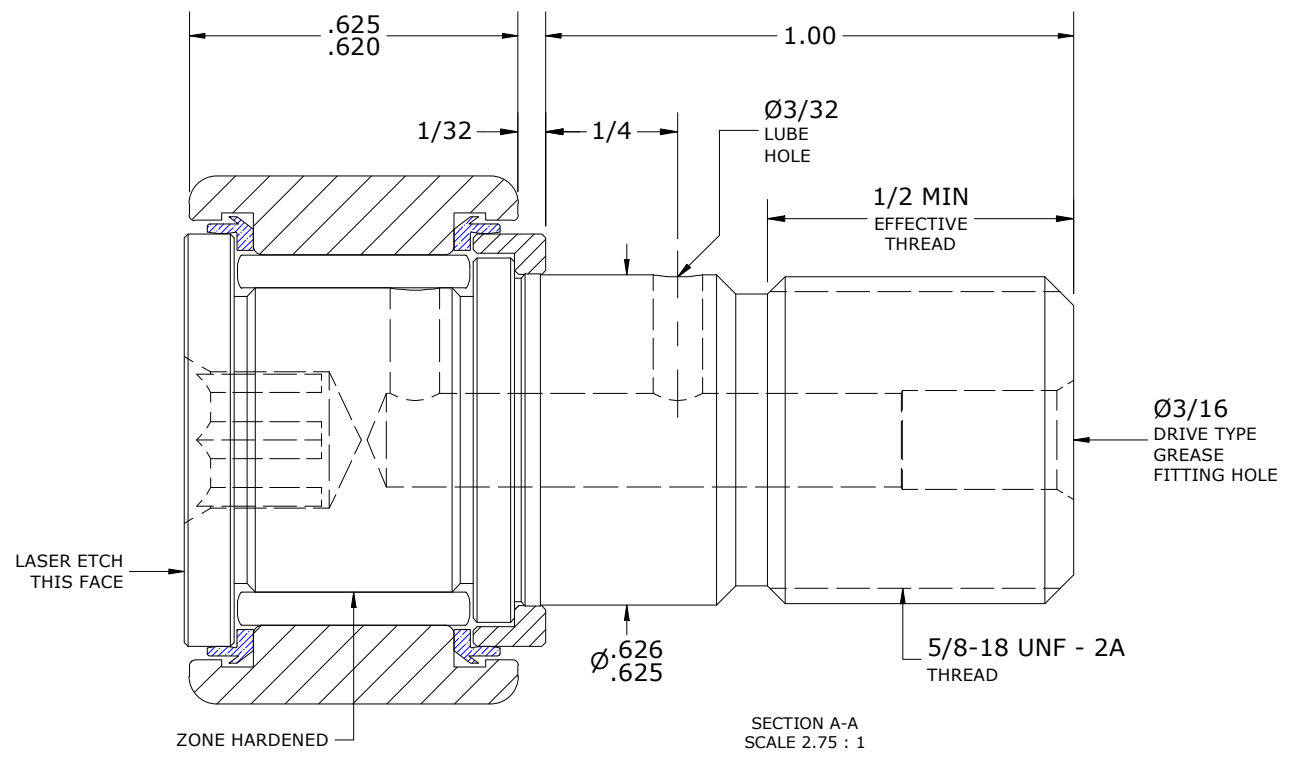
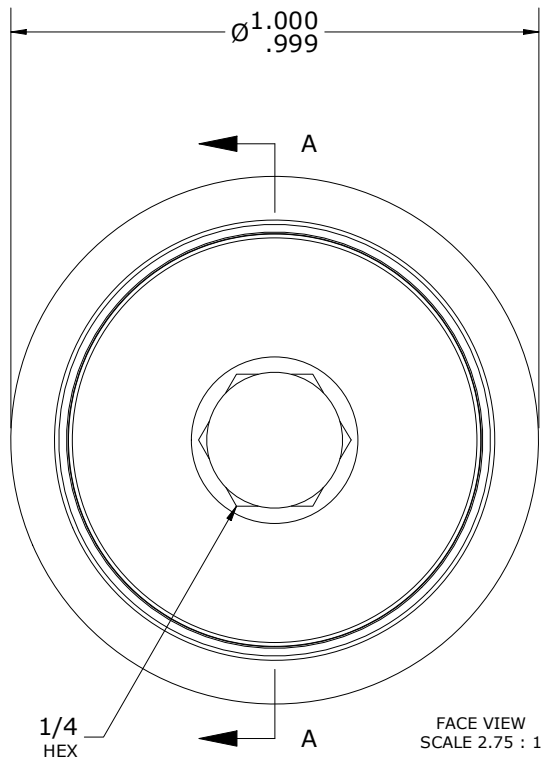
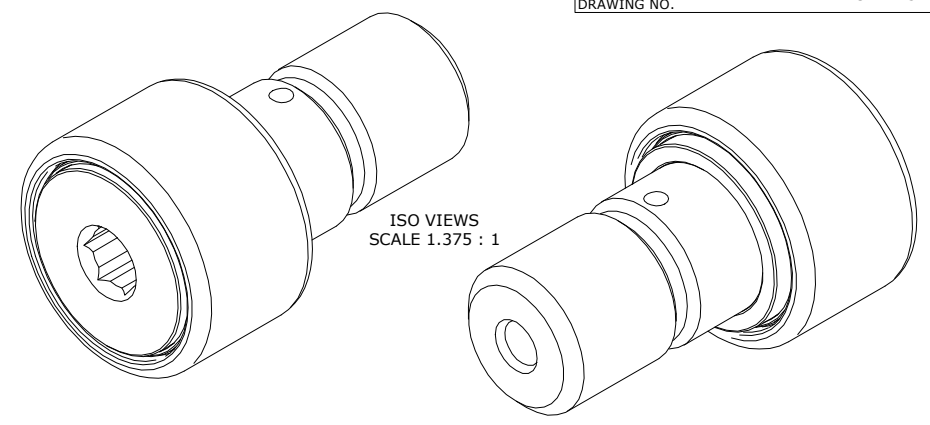


LOAD RATINGS		
RATING	lbf	Newtons
RADIAL BASIC DYNAMIC	2,225	9,897
MAXIMUM STATIC CAPACITY	6,120	27,223

- NOTES:
- BEARING IS PACKED WITH NLGI GRADE 2, LITHIUM BASED GREASE (UNLESS OTHERWISE SPECIFIED)
  - ALL EXPOSED STEEL SURFACES HAVE BLACK OXIDE
  - CUSTOM LASER ETCHING UPON REQUEST
  - LIMITING SPEED:
    - A. GREASE = 4,800 RPM

RECOMMENDED MOUNTING HOLE Ø		
Limit	Inch	mm
MIN	.6250	15.8750
MAX	.6255	15.8877

MAXIMUM CLAMPING TORQUE**		
Thread Type	Inch lbf	Nm
LUBRICATED	325	36.72



\*\*TORQUE SPECIFICATION IS BASED ON LUBRICATED THREADS, IF USING DRY THREADS DOUBLE TORQUE VALUE

MATERIAL NOTES:

OUTER RING - BEARING STEEL, HEAT TREATED

STUD - BEARING STEEL, ZONE HARDENED

NEEDLE ROLLER(S) - BEARING STEEL, HEAT TREATED

WASHER - STEEL, HEAT TREATED

SEAL(S) - SYNTHETIC

CUSTOMER PART#	XX = ± .01 XXX = ± .005 XXXX = ± .0005 ANGLES = ± 2' INCH [METRIC] FRACTION = ± 1/64
<b>ENGINEERING CHANGE ORDER NOTE</b>	
CARTER STANDARD SURFACE FINISH IS MEASURED IN "Ra" UNITS UNLESS OTHERWISE SPECIFIED.	

CARTER MANUFACTURING IS NOT RESPONSIBLE FOR TYPOGRAPHICAL ERRORS				<b>CARTER MANUFACTURING CO., INC.</b> GRAND HAVEN, MICHIGAN 49417			
<b>REVISION</b>				PART NAME: ASSEMBLY		PRODUCT TYPE: Standard CF	
<b>E</b>	AUTHOR BY HG	DRAWN BY GJP	CHK'D BY MD	SALES KR	MATERIAL NOTED		
REVISION BY DJB	DATE 11/15/2023	DATE 8/23/2000	DATE 11/15/2023	DATE 5/5/2013	SHEET 1 OF 2		