

LOAD RATINGS		
RATING	Lbs	Newtons
RADIAL BASIC DYNAMIC	46,575	207,176
MAXIMUM STATIC CAPACITY	135,900	604,513

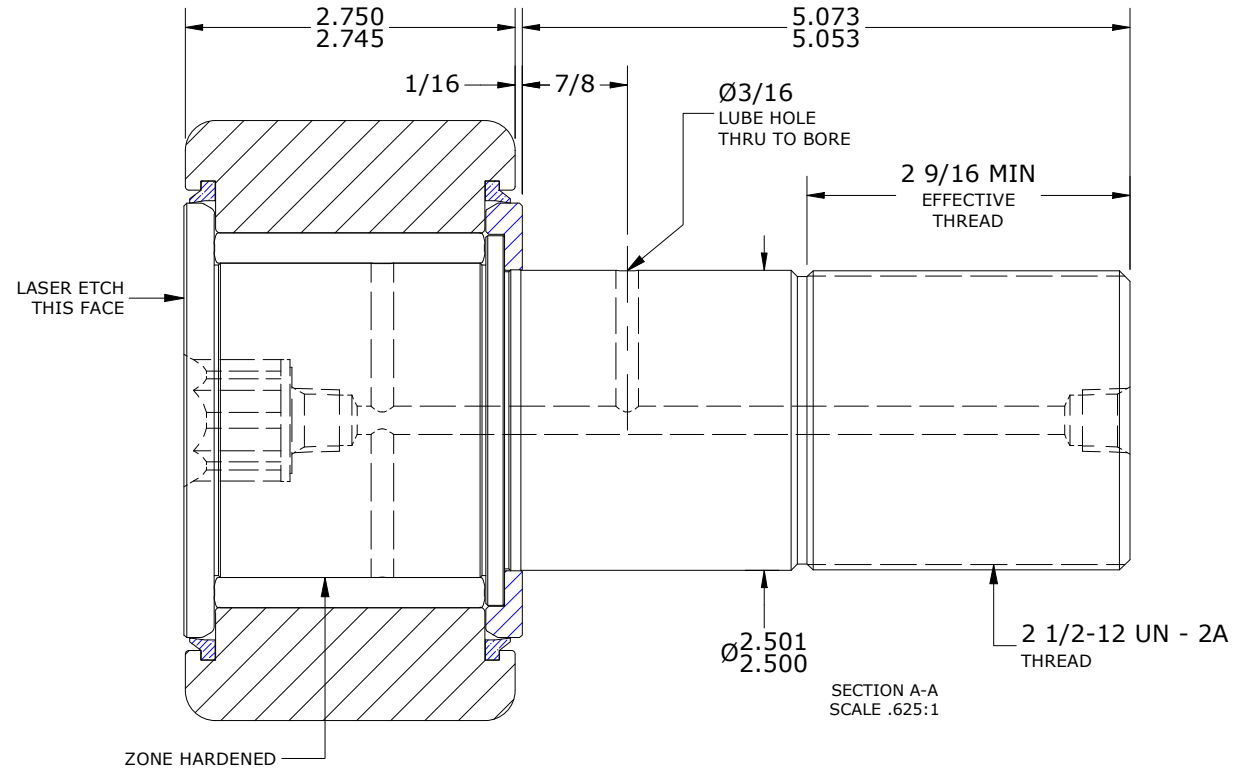
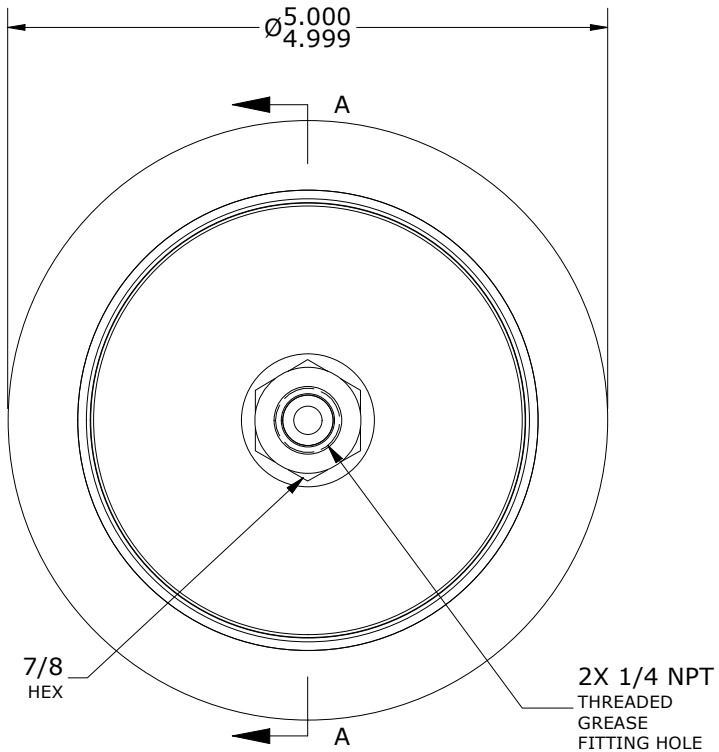
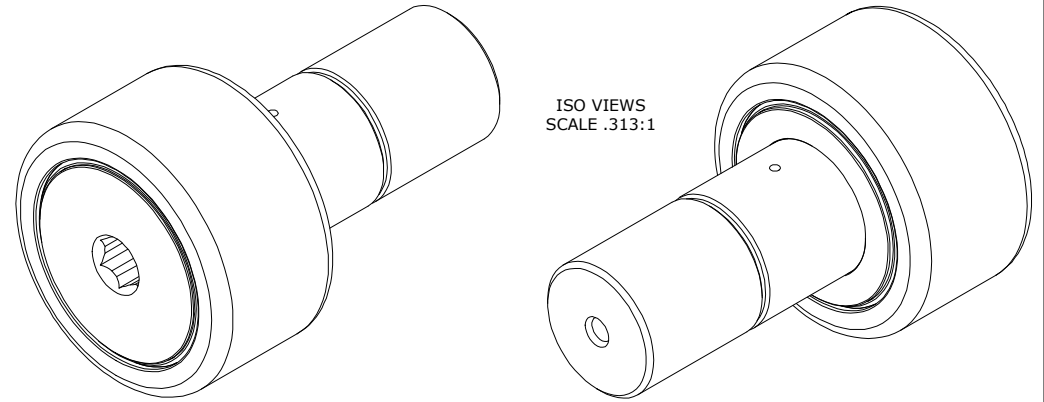
RECOMMENDED MOUNTING HOLE Ø		
Limit	Inch	mm
MIN	2.5027	63.5686
MAX	2.5032	63.5813

MAXIMUM CLAMPING TORQUE**		
Thread Type	Inch Lbs	Nm
LUBRICATED	2,500	282.5

NOTES:

- BEARING IS PACKED WITH NLGI GRADE 2, LITHIUM BASED GREASE (UNLESS OTHERWISE SPECIFIED).
- ALL EXPOSED SURFACES HAVE BLACK OXIDE.
- LIMITING SPEED:
A. GREASE = 575 RPM.
- CUSTOM LASER ETCHING AVAILABLE UPON REQUEST.
- GREASE FITTINGS AND PLUG SHIPPED LOOSE.

MS NO. _____ NSN NO. _____ DRAWING NO. CNBH-160-SB



**TORQUE SPECIFICATION IS BASED ON LUBRICATED THREADS, IF USING DRY THREADS DOUBLE TORQUE VALUE

MATERIAL NOTES:
 OUTER RING - BEARING STEEL, HEAT TREATED
 STUD - BEARING STEEL, ZONE HARDENED
 NEEDLE ROLLER(S) - BEARING STEEL, HEAT TREATED
 WASHER - STEEL, HEAT TREATED
 SEAL(S) - SYNTHETIC
 PLUG - BRASS*
 GREASE FITTING(S) - 1/4-NPT, EQUIVALENT TO ALEMITE P/N: 1627-B*
 *(NOT SHOWN)

CUSTOMER PART#	XX = ± .01 XXX = ± .005 XXXX = ± .0005 ANGLES = ± 1' INCH [METRIC] FRACTION = ± 1/32
ENGINEERING CHANGE ORDER NOTE	

CARTER MANUFACTURING IS NOT RESPONSIBLE FOR TYPOGRAPHICAL ERRORS				CARTER MANUFACTURING CO., INC. GRAND HAVEN, MICHIGAN 49417			
REVISION				PART NAME: ASSEMBLY		PRODUCT TYPE: CNBH	
D	AUTHOR BY HG	DRAWN BY RAM	CHK'D BY MD	SALES NC	MATERIAL NOTED		
REVISION BY SGW	DATE 10/26/2021	DATE 7/23/1998	DATE 10/25/2021	DATE 10/26/2021	SHEET 1 OF 2		