

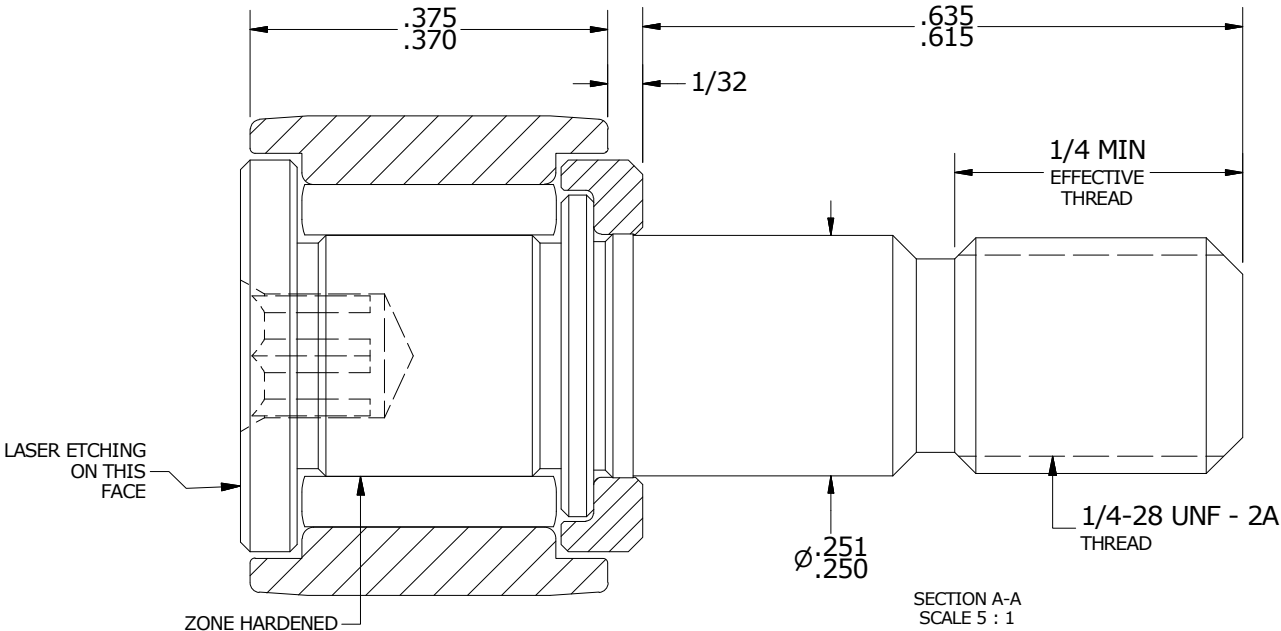
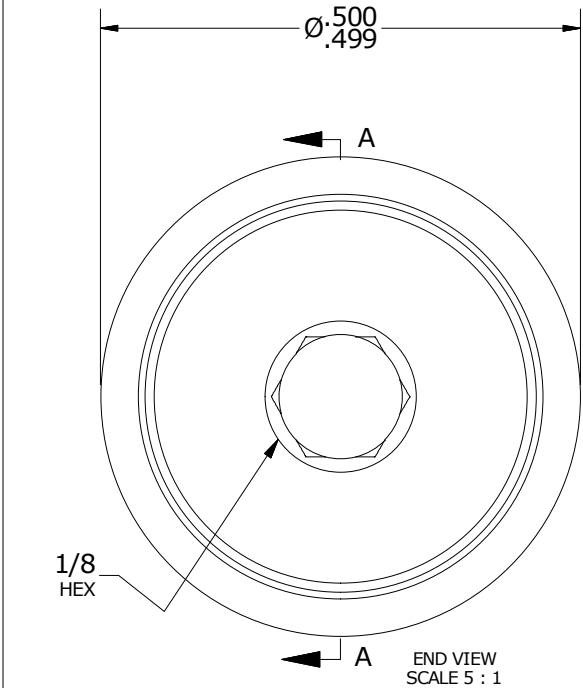
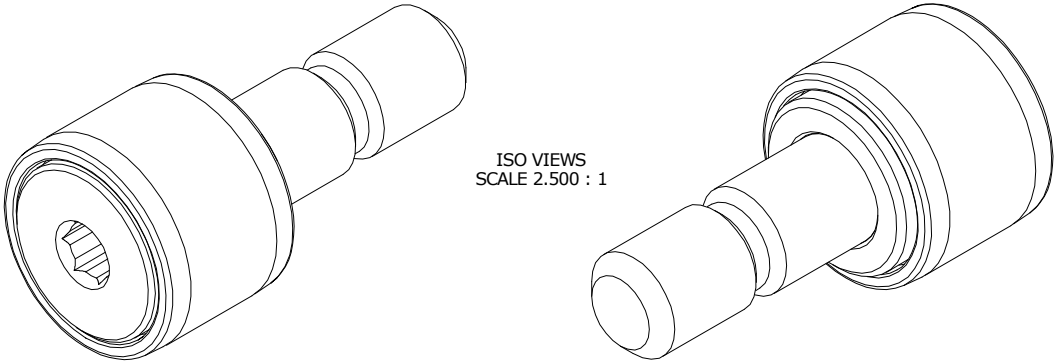
LOAD RATINGS		
RATING	lbf	Newtons
RADIAL BASIC DYNAMIC	680	3,025
MAXIMUM STATIC CAPACITY	1,580	7,028

RECOMMENDED MOUNTING HOLE Ø		
Limit	Inch	mm
MIN	.2500	6.3500
MAX	.2505	6.3627

MAXIMUM CLAMPING TORQUE		
Thread Type	Inch Lbs	Nm
DRY	35	3.95
LUBRICATED	17.5	1.98

- NOTES:
1. BEARING IS PACKED WITH NLGI GRADE 2, LITHIUM BASED GREASE (UNLESS OTHERWISE SPECIFIED)
 2. ALL EXPOSED STEEL SURFACES HAVE BLACK OXIDE
 3. CUSTOM LASER ETCHING UPON REQUEST
 4. LIMITING SPEED:
 - A. GREASE = 11,500 RPM

MS NO.	NSN NO.	DRAWING NO.	CNBH-16-B
--------	---------	-------------	-----------



MATERIAL NOTES: OUTER RING - BEARING STEEL, HEAT TREATED STUD - BEARING STEEL, ZONE HARDENED NEEDLE ROLLER(S) - BEARING STEEL, HEAT TREATED WASHER - BEARING STEEL, HEAT TREATED	CUSTOMER PART#	XX = ± .01 XXX = ± .005 XXXX = ± .0005 ANGLES = ± 1° INCH [METRIC] FRACTION = ± 1/32	CARTER MANUFACTURING IS NOT RESPONSIBLE FOR TYPOGRAPHICAL ERRORS		CARTER MANUFACTURING CO., INC. GRAND HAVEN, MICHIGAN 49417			
	ENGINEERING CHANGE ORDER NOTE		REVISION		PART NAME: ASSEMBLY		PRODUCT TYPE: CNB	
			D	AUTHOR BY DB	DRAWN BY GJP	CHK'D BY MD	SALES KR	MATERIAL NOTED
			REVISION BY SGW	DATE 1/28/2011	DATE 8/31/1999	DATE 1/28/2011	DATE 1/28/2011	SHEET 1 OF 2