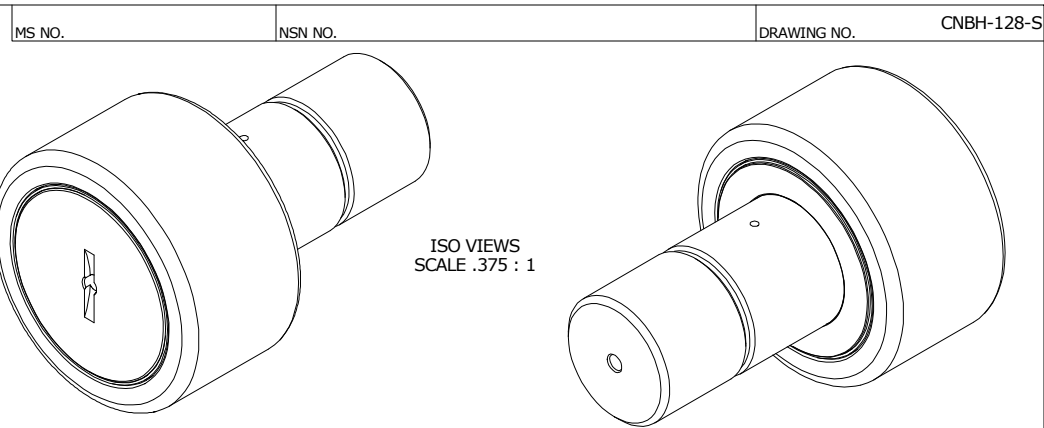


LOAD RATINGS		
RATING	lbf	Newtons
RADIAL BASIC DYNAMIC	29,985	133,380
MAXIMUM STATIC CAPACITY	89,540	398,294

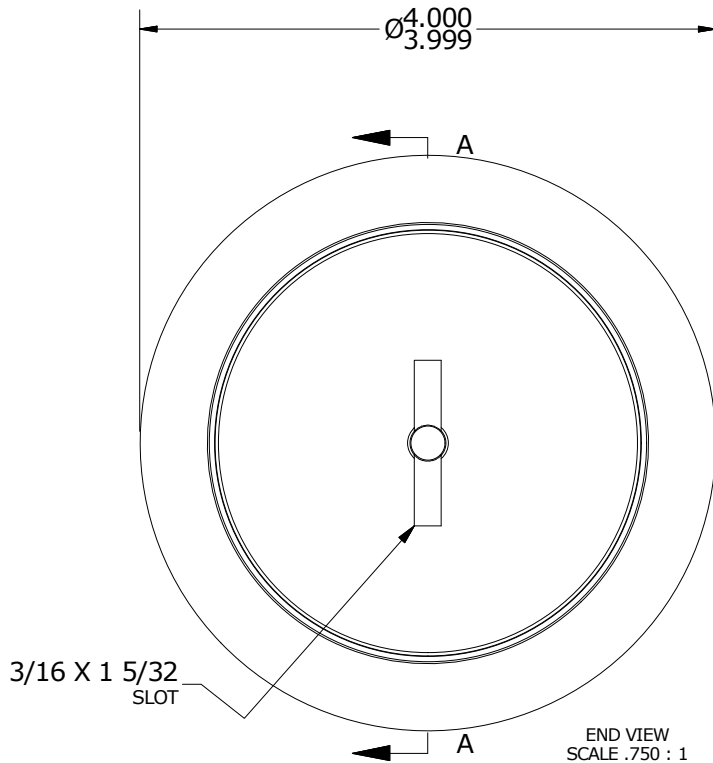
RECOMMENDED MOUNTING HOLE Ø		
Limit	Inch	mm
MIN	2.0000	50.8000
MAX	2.0005	50.8127

MAXIMUM CLAMPING TORQUE		
Thread Type	Inch Lbs	Nm
DRY	5,000	565
LUBRICATED	2,500	282.5

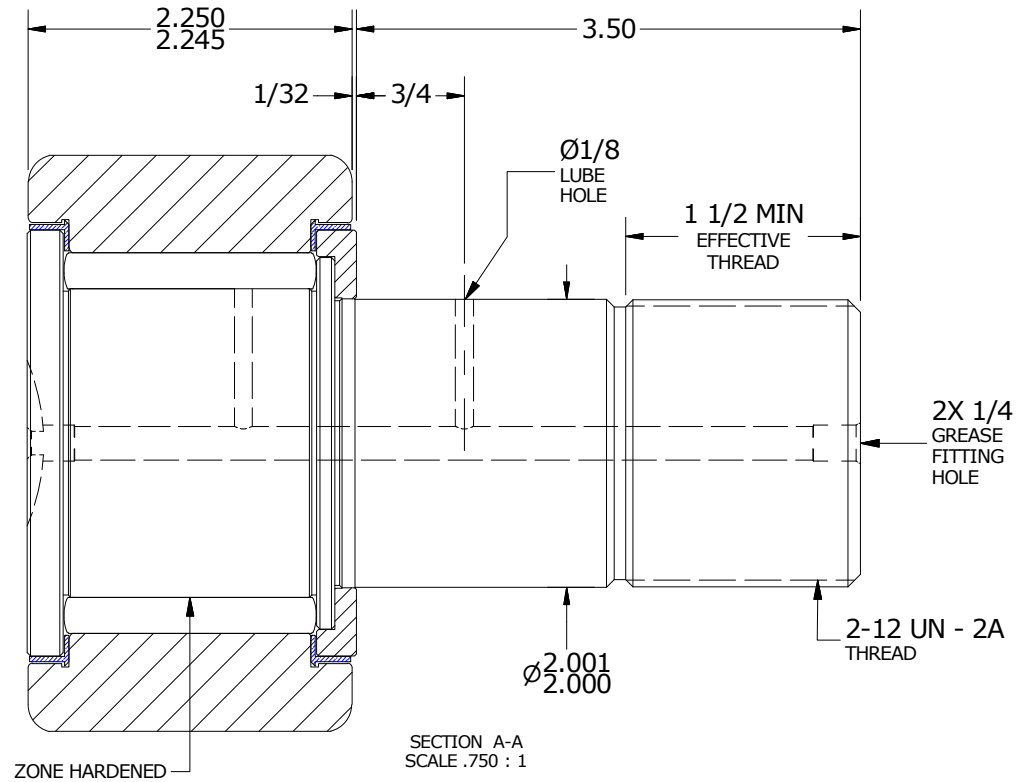
- NOTES:
1. BEARING IS PACKED WITH NLGI GRADE 2, LITHIUM BASED GREASE (UNLESS OTHERWISE SPECIFIED)
 2. ALL EXPOSED SURFACES HAVE BLACK OXIDE
 3. LIMITING SPEED:
A. GREASE = 700



ISO VIEWS
SCALE .375 : 1



END VIEW
SCALE .750 : 1



SECTION A-A
SCALE .750 : 1

MATERIAL NOTES:

OUTER RING - BEARING STEEL, HEAT TREATED
 STUD - BEARING STEEL, ZONE HARDENED
 NEEDLE ROLLER(S) - BEARING STEEL, HEAT TREATED
 WASHER - BEARING STEEL, HEAT TREATED
 SEAL(S) - SYNTHETIC

CUSTOMER PART#

XX = ± .01
 XXX = ± .005
 XXXX = ± .0005
 ANGLES = ± 1'
 INCH [METRIC]
 FRACTION = ± 1/32

CARTER MANUFACTURING IS NOT RESPONSIBLE FOR TYPOGRAPHICAL ERRORS

CARTER MANUFACTURING CO., INC.
 GRAND HAVEN, MICHIGAN 49417

ENGINEERING CHANGE ORDER NOTE

REVISION

PART NAME: ASSEMBLY

PRODUCT TYPE: CNB

B

AUTHOR BY
DB

DRAWN BY
GJP

CHK'D BY
MD

SALES
KPR

MATERIAL
NOTED

REVISION BY
SGW

DATE
3/9/2010

DATE
8/15/2000

DATE
3/9/2010

DATE
10/5/2000

SHEET
1 OF 2