

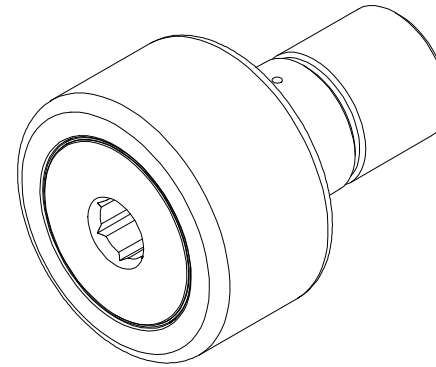
LOAD RATINGS		
RATING	lbf	Newtons
RADIAL BASIC DYNAMIC	22,800	101,419
STATIC THRUST LOAD	63,250	281,350

- NOTES:
1. BEARING IS PACKED WITH NLGI GRADE 2, LITHIUM BASED GREASE (UNLESS OTHERWISE SPECIFIED)
 2. ALL EXPOSED SURFACES HAVE BLACK OXIDE
 3. LIMITING SPEED:
A. GREASE = 820

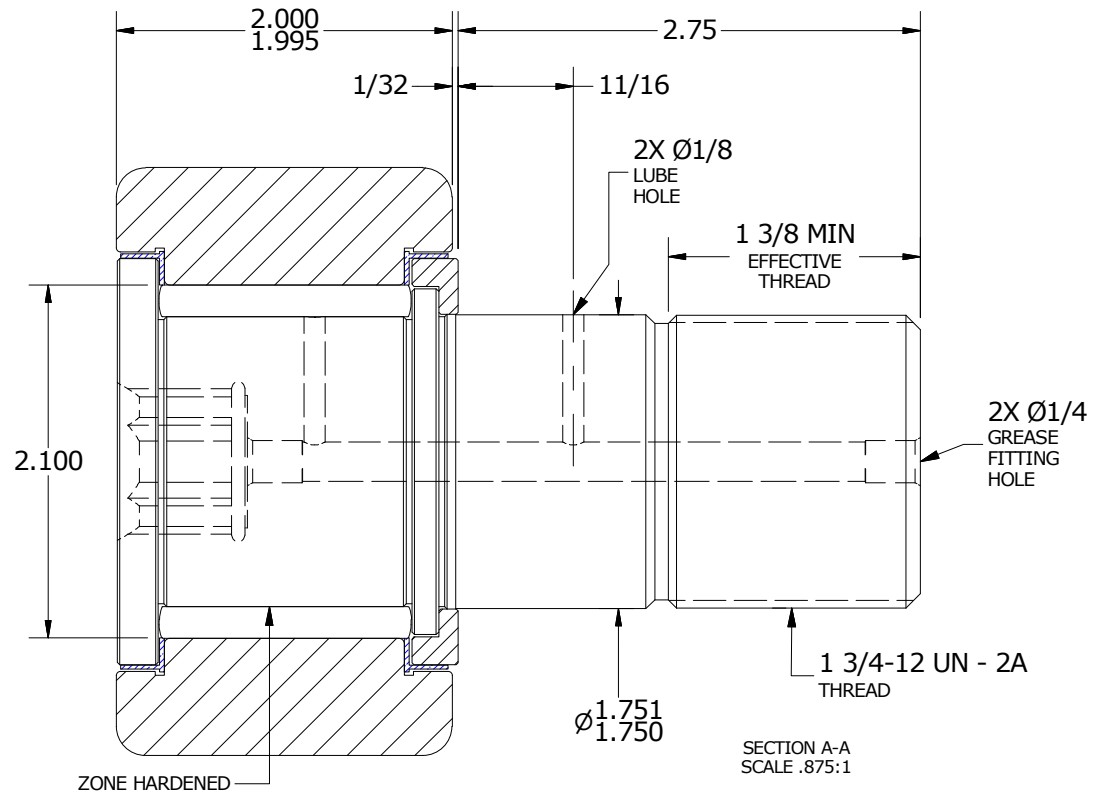
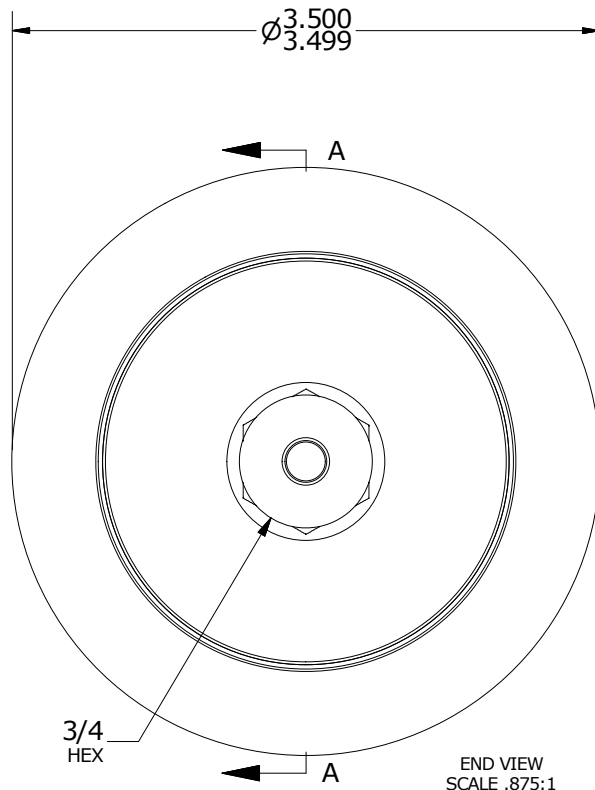
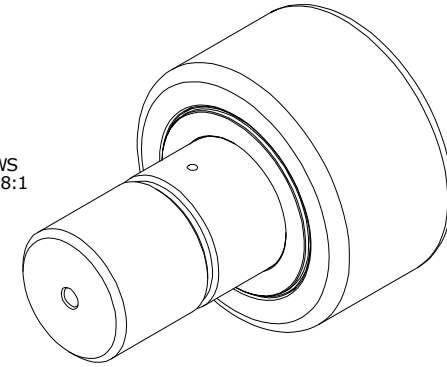
MS NO.	NSN NO.	DRAWING NO.	CNBH-112-SB
--------	---------	-------------	-------------

RECOMMENDED MOUNTING HOLE Ø		
Limit	Inch	mm
MIN	1.7500	44.4500
MAX	1.7505	44.4627

MAXIMUM CLAMPING TORQUE		
Thread Type	Inch lbf	Nm
DRY	5,000	565
LUBRICATED	2,500	282.5



ISO VIEWS
SCALE .438:1



MATERIAL NOTES:

- OUTER RING - BEARING STEEL, HEAT TREATED
- STUD - BEARING STEEL, ZONE HARDENED
- NEEDLE ROLLER(S) - BEARING STEEL, HEAT TREATED
- WASHER - STEEL, HEAT TREATED
- SEAL(S) - SYNTHETIC

CUSTOMER PART#

XX = ± .01
XXX = ± .005
XXXX = ± .0005
ANGLES = ± 1'
INCH [METRIC]
FRACTION = ± 1/32

CARTER MANUFACTURING IS NOT RESPONSIBLE FOR TYPOGRAPHICAL ERRORS

CARTER MANUFACTURING CO., INC.

GRAND HAVEN, MICHIGAN 49417

ENGINEERING CHANGE ORDER NOTE

REVISION

PART NAME: ASSEMBLY

PRODUCT TYPE: CNB

A

AUTHOR BY
JGV

DRAWN BY
JAF

CHK'D BY
JGV

SALES
KPR

MATERIAL
NOTED

REVISION BY
SGW
DATE
7/7/2006

DATE
7/7/2006

DATE
7/7/2006

DATE
7/6/2006

SHEET
1 OF 2