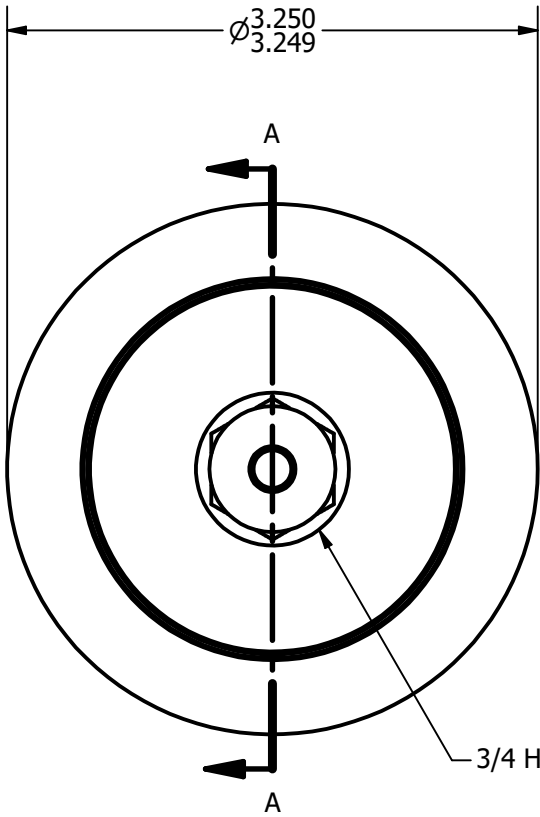
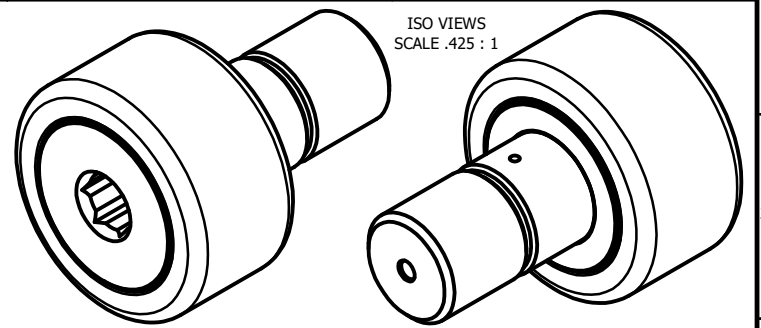


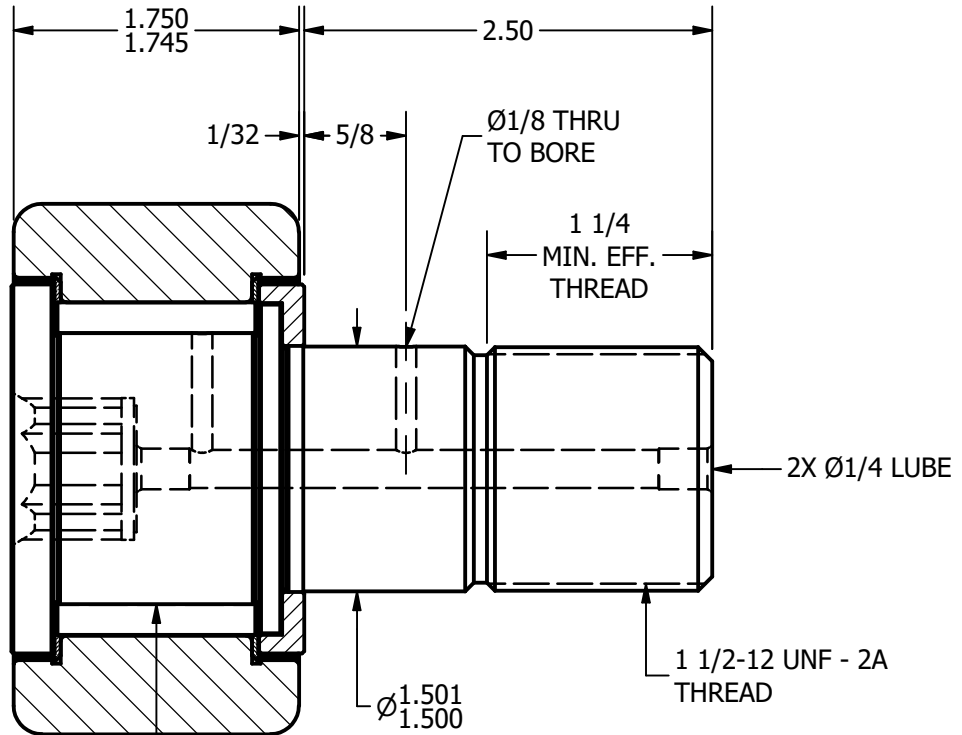
LOAD RATINGS	
RATING	Lbs
RADIAL BASIC DYNAMIC	15,720
MAXIMUM STATIC CAPACITY	49,820

NOTES:  
 1. BEARING IS PACKED WITH LITHIUM BASED #2 WEIGHT GREASE  
 2. ALL EXPOSED SURFACES HAVE BLACK OXIDE

M/S NO. \_\_\_\_\_ W/S/N NO. \_\_\_\_\_ DRAWING NO. **CNBH-104-SB**



BASE VIEW  
SCALE .85 : 1



ZONE HARDENED

SECTION A-A  
SCALE .85 : 1

**MATERIAL NOTES:**  
 OUTER RACE - BEARING STEEL, HEAT TREATED  
 STUD - BEARING STEEL, ZONE HARDENED  
 NEEDLE ROLLERS - BEARING STEEL, HEAT TREATED  
 WASHER - COLD ROLLED STEEL, HEAT TREATED  
 SEALS - SYNTHETIC

CUSTOMER PART#	.XX = ± .01 .XXX = ± .005 .XXXX = ± .0005 ANGLES = ± 1' INCH [METRIC] FRACTION = ± 1/32
CHANGE NOTE:	

CARTER MANUFACTURING IS NOT RESPONSIBLE FOR TYPOGRAPHICAL ERRORS	
REVISION	
<b>B</b>	AUTHOR. BY DB
REV. BY MD	DATE 7/26/2011

<b>CARTER MANUFACTURING CO., INC.</b>					
GRAND HAVEN, MICHIGAN 49417					
PART NAME: Assembly			SHEET 1 OF 2		
	AUTHOR. BY	DRAWN BY	CHK'D BY	SALES	MATERIAL
	DB	JAF	SGW	KPR	NOTED
	DATE	DATE	DATE	DATE	DRAWING NO.
	7/26/2011	7/10/2006	7/26/2011	7/10/2006	<b>CNBH-104-SB</b>