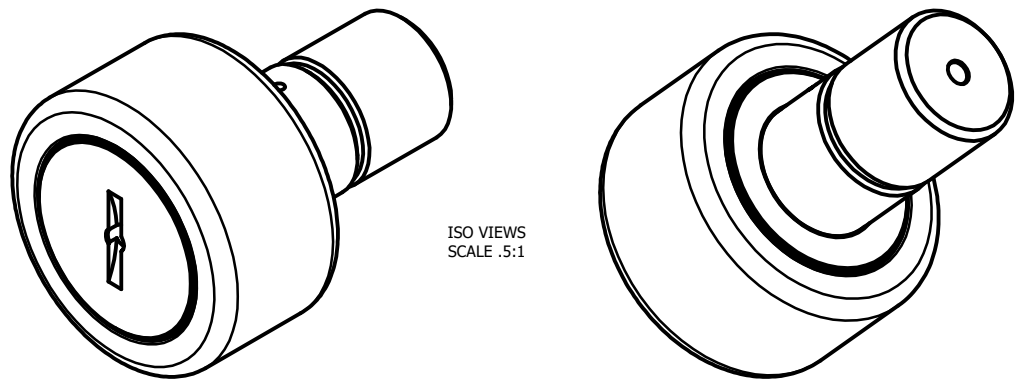
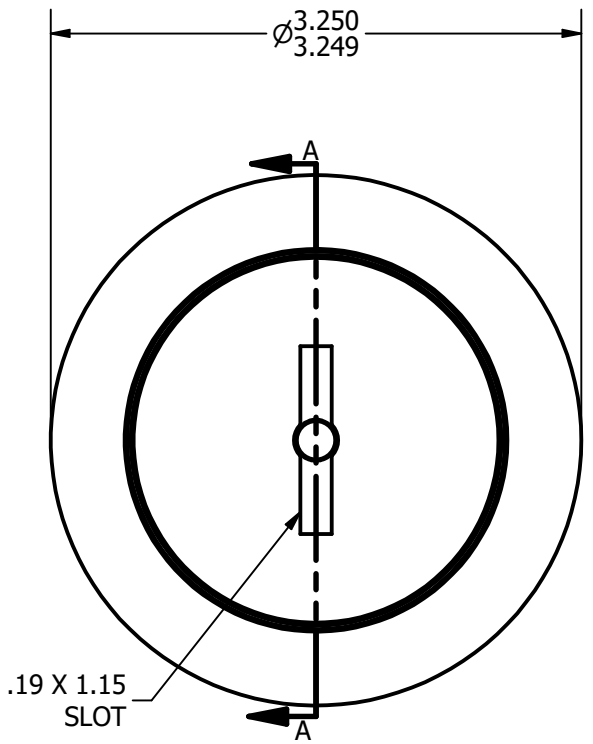


LOAD RATINGS	
RATING	Lbs
RADIAL BASIC DYNAMIC	15,720
MAXIMUM STATIC CAPACITY	49,820

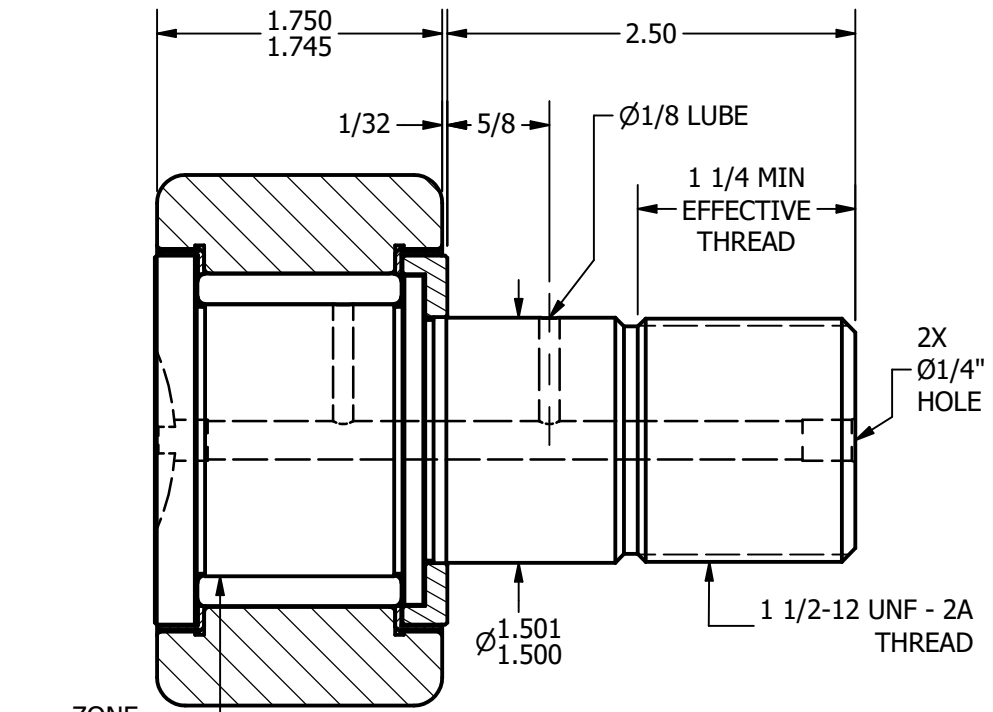
- NOTES:
 1. BEARING COMES PACKED WITH LITHIUM BASED #2 WEIGHT GREASE
 2. ALL EXPOSED SURFACES HAVE BLACK OXIDE



ISO VIEWS
SCALE .5:1



BASE VIEW (END)
SCALE .85 : 1



SECTION A-A
SCALE .85 : 1

MATERIAL NOTES:
 OUTER - BEARING STEEL, HEAT TREATED
 STUD - BEARING STEEL, ZONE HARDENED
 ROLLER - BEARING STEEL, HEAT TREATED
 WASHER - COLD ROLLED STEEL, HEAT TREATED
 SEAL - SYNTHETIC

CUSTOMER PART#	.XX = ± .01 .XXX = ± .005 .XXXX = ± .0005 ANGLES = ± 1' INCH [METRIC]
CHANGE NOTE:	

CARTER MANUFACTURING IS NOT RESPONSIBLE FOR TYPOGRAPHICAL ERRORS

REVISION	
B	AUTHOR. BY DB
REV. BY SGW	DATE 8/5/2009

CARTER MANUFACTURING CO., INC.
 GRAND HAVEN, MICHIGAN 49417

PART NAME: ASSEMBLY			SHEET 1 OF 2		
SALES KR	MATERIAL NOTED	CHK'D BY MD	DATE 8/5/2009	DATE 8/4/2009	DRAWING NO. CNBH-104-S