

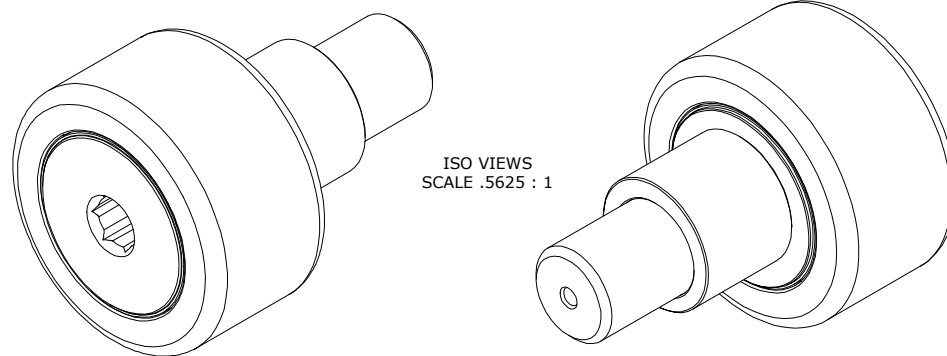
LOAD RATINGS		
RATING	lbf	Newtons
RADIAL BASIC DYNAMIC	11,720	52,133
MAXIMUM STATIC CAPACITY	16,450	73,173

NOTES:

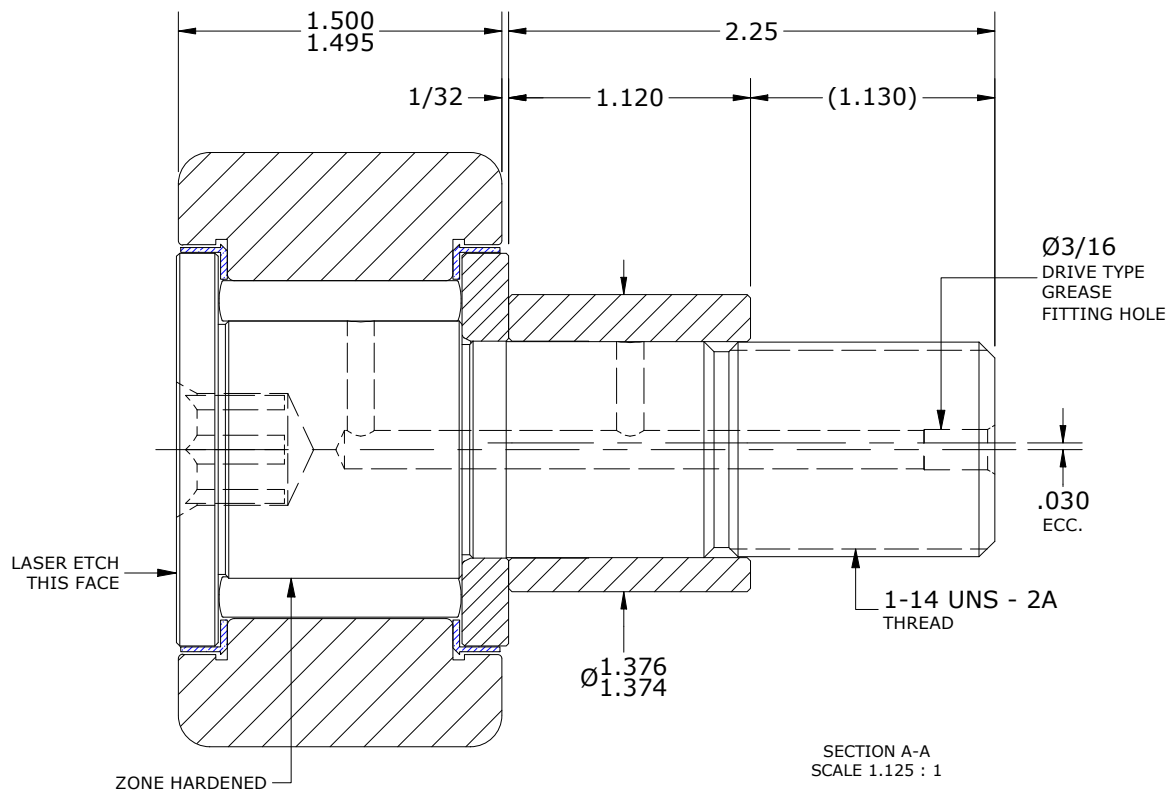
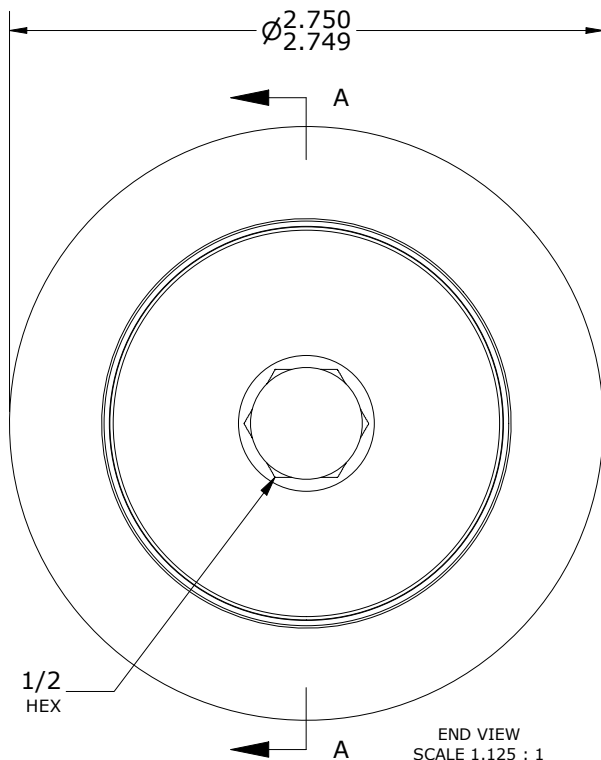
1. BEARING IS PACKED WITH NLGI GRADE 2, LITHIUM BASED GREASE (UNLESS OTHERWISE SPECIFIED).
2. ALL EXPOSED SURFACES HAVE BLACK OXIDE.
3. LIMITING SPEED:  
A. GREASE = 1,050 RPM.
4. CUSTOM LASER ETCHING AVAILABLE UPON REQUEST.

RECOMMENDED MOUNTING HOLE Ø		
Limit	Inch	mm
MIN	1.377	34.976
MAX	1.379	35.027

MAXIMUM CLAMPING TORQUE **		
Thread Type	Inch lbf	Nm
LUBRICATED	1,125	127



ISO VIEWS  
SCALE .5625 : 1



\*\*TORQUE SPECIFICATION IS BASED ON LUBRICATED THREADS, IF USING DRY THREADS DOUBLE TORQUE VALUE

MATERIAL NOTES:

- OUTER RING - BEARING STEEL, HEAT TREATED
- STUD - BEARING STEEL, ZONE HARDENED
- NEEDLE ROLLER(S) - BEARING STEEL, HEAT TREATED
- WASHER - STEEL, HEAT TREATED
- ECCENTRIC SLEEVE - STEEL
- SEAL(S) - SYNTHETIC

CUSTOMER PART#

XX = ± .01  
XXX = ± .005  
XXXX = ± .0005  
ANGLES = ± 1'  
INCH (METRIC)  
FRACTION = ± 1/32

CARTER MANUFACTURING IS NOT RESPONSIBLE FOR TYPOGRAPHICAL ERRORS

**CARTER MANUFACTURING CO., INC.**

GRAND HAVEN, MICHIGAN 49417

ENGINEERING CHANGE ORDER NOTE

REVISION

PART NAME: ASSEMBLY

PRODUCT TYPE: CNBE

B

AUTHOR BY

DRAWN BY

CHK'D BY

SALES

MATERIAL

HG

GJP

MD

NC

NOTED

REVISION BY

DATE

DATE

DATE

DATE

SHEET

SGW

12/10/2020

8/14/2000

12/10/2020

12/10/2020

1 OF 2