

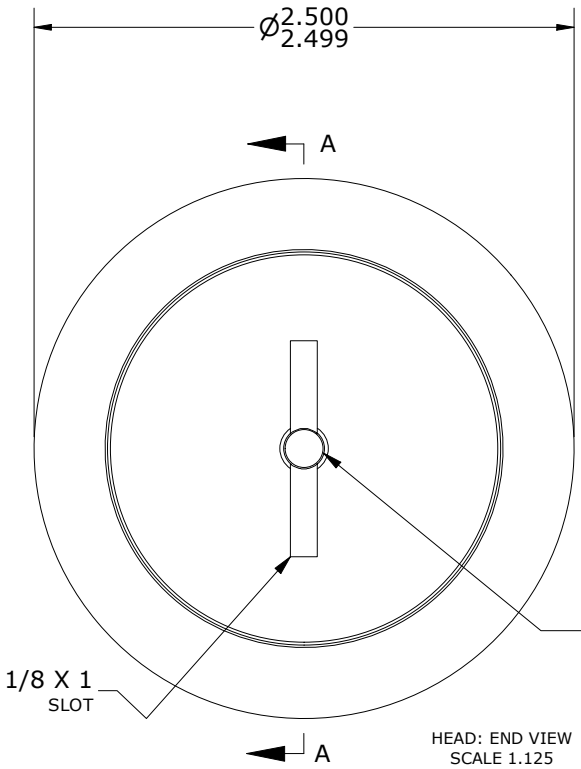
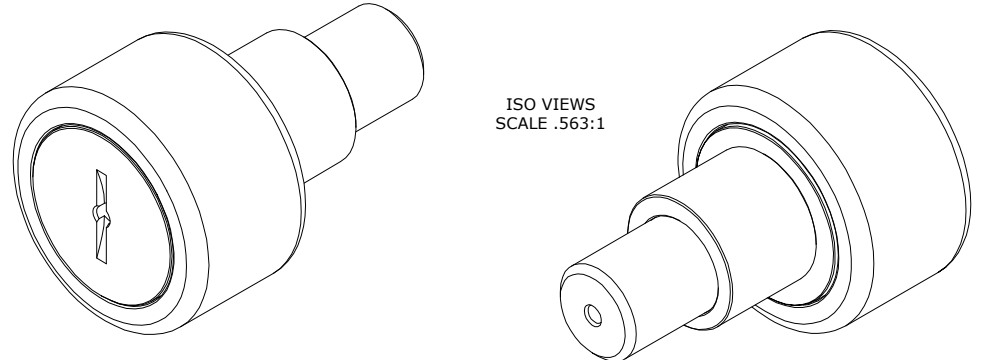
LOAD RATINGS		
RATING	lbf	Newtons
RADIAL BASIC DYNAMIC	11,720	52,133
MAXIMUM STATIC CAPACITY	16,450	73,173

RECOMMENDED MOUNTING HOLE		
LIMIT	Inch	mm
MIN.	1.377	34.9758
MAX.	1.379	35.0266

MAXIMUM CLAMPING TORQUE **		
Thread Type	Inch lbf	Nm
LUBRICATED	1,125	127

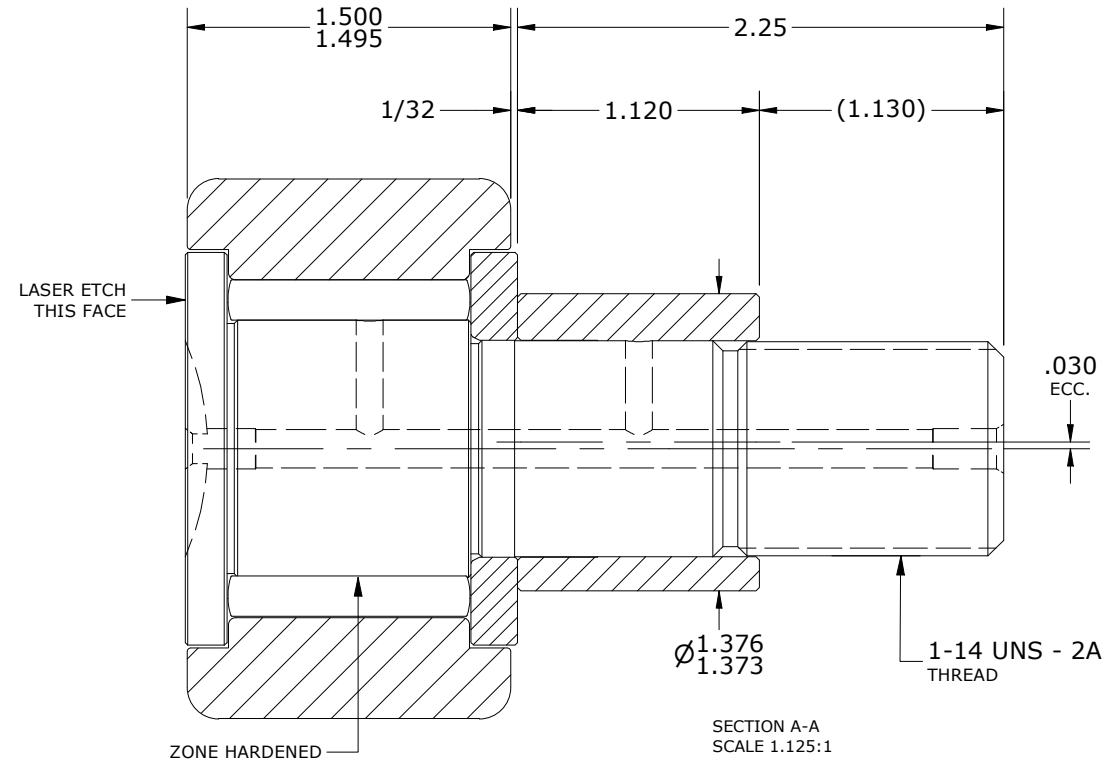
NOTES:
 1. BEARING IS PACKED WITH NLGI GRADE 2, LITHIUM BASED GREASE UNLESS OTHERWISE SPECIFIED
 2. ALL EXPOSED STEEL SURFACES HAVE BLACK OXIDE
 3. CUSTOM LASER ETCHING IS AVAILABLE UPON REQUEST
 4. LIMITING SPEED:
 A. GREASE = 1,100 RPM

MS NO. _____ NSN NO. _____ DRAWING NO. _____ CNBE-80



2X Ø3/16
 DRIVE TYPE
 GREASE
 FITTING HOLE

HEAD: END VIEW
 SCALE 1.125



SECTION A-A
 SCALE 1.125:1

** TORQUE SPECIFICATION IS BASED ON LUBRICATED THREADS, IF USING CLEAN DRY THREADS DOUBLE TORQUE VALUE

MATERIAL NOTES:
 OUTER RING - BEARING STEEL, HEAT TREATED
 STUD - BEARING STEEL, ZONE HARDENED
 NEEDLE ROLLER(S) - BEARING STEEL, HEAT TREATED
 WASHER - STEEL, HEAT TREATED
 ECCENTRIC SLEEVE - STEEL

CUSTOMER PART#	XX = ± .01 XXX = ± .005 XXXX = ± .0005 ANGLES = ± 1' INCH [METRIC] FRACTION = ± 1/64
ENGINEERING CHANGE ORDER NOTE	

CARTER MANUFACTURING IS NOT RESPONSIBLE FOR TYPOGRAPHICAL ERRORS				CARTER MANUFACTURING CO., INC. GRAND HAVEN, MICHIGAN 49417			
REVISION		PART NAME: ASSEMBLY			PRODUCT TYPE: CNB		
B	AUTHOR BY HG	DRAWN BY JAF	CHK'D BY MD	SALES NC	MATERIAL NOTED		
REVISION BY SGW	DATE 2/24/2022	DATE 7/11/2006	DATE 2/24/2022	DATE 2/24/2022	SHEET 1 OF 2		