

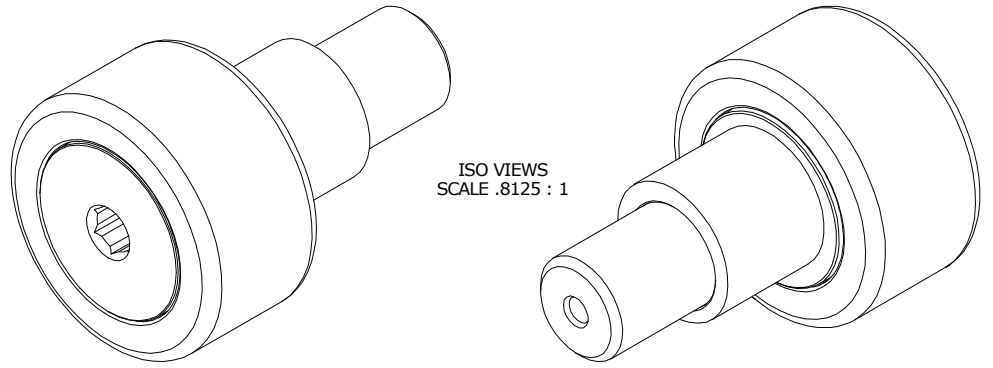
LOAD RATINGS		
RATING	lbf	Newtons
RADIAL BASIC DYNAMIC	6,385	28,402
MAXIMUM STATIC CAPACITY	7,920	35,230

RECOMMENDED MOUNTING HOLE Ø		
Limit	Inch	mm
MIN	1.002	25.451
MAX	1.004	25.502

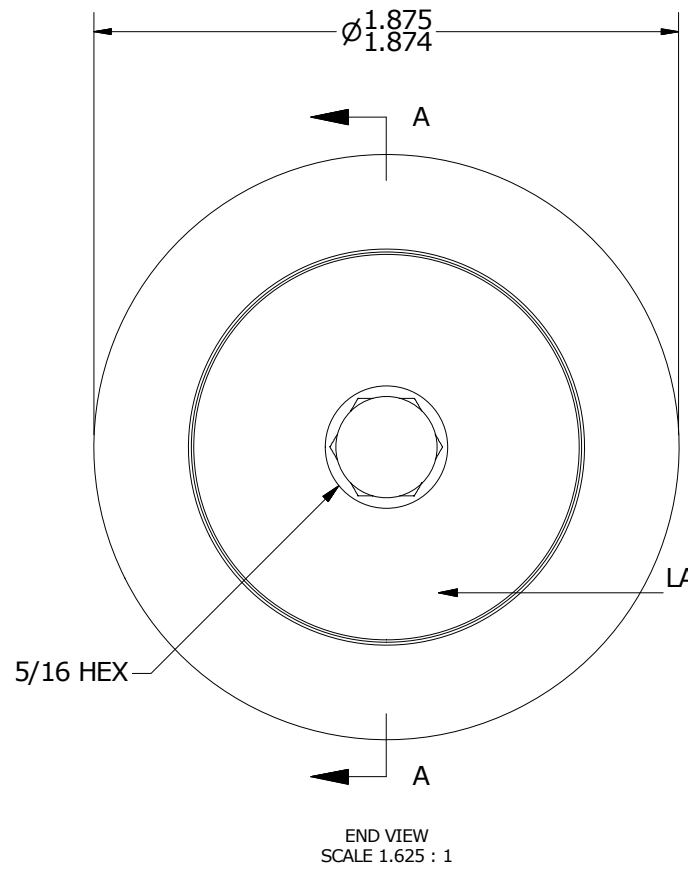
MAXIMUM CLAMPING TORQUE		
Thread Type	Inch lbf	Nm
DRY	1,250	141
LUBRICATED	625	70.5

- NOTES:
1. BEARING IS PACKED WITH NLGI GRADE 2, LITHIUM BASED GREASE UNLESS OTHERWISE SPECIFIED
 2. ALL EXPOSED SURFACES HAVE BLACK OXIDE
 3. CUSTOM LASER ETCHING AVAILABLE UPON REQUEST
 4. LIMITING SPEED:
 - A. GREASE = 2,000 RPM

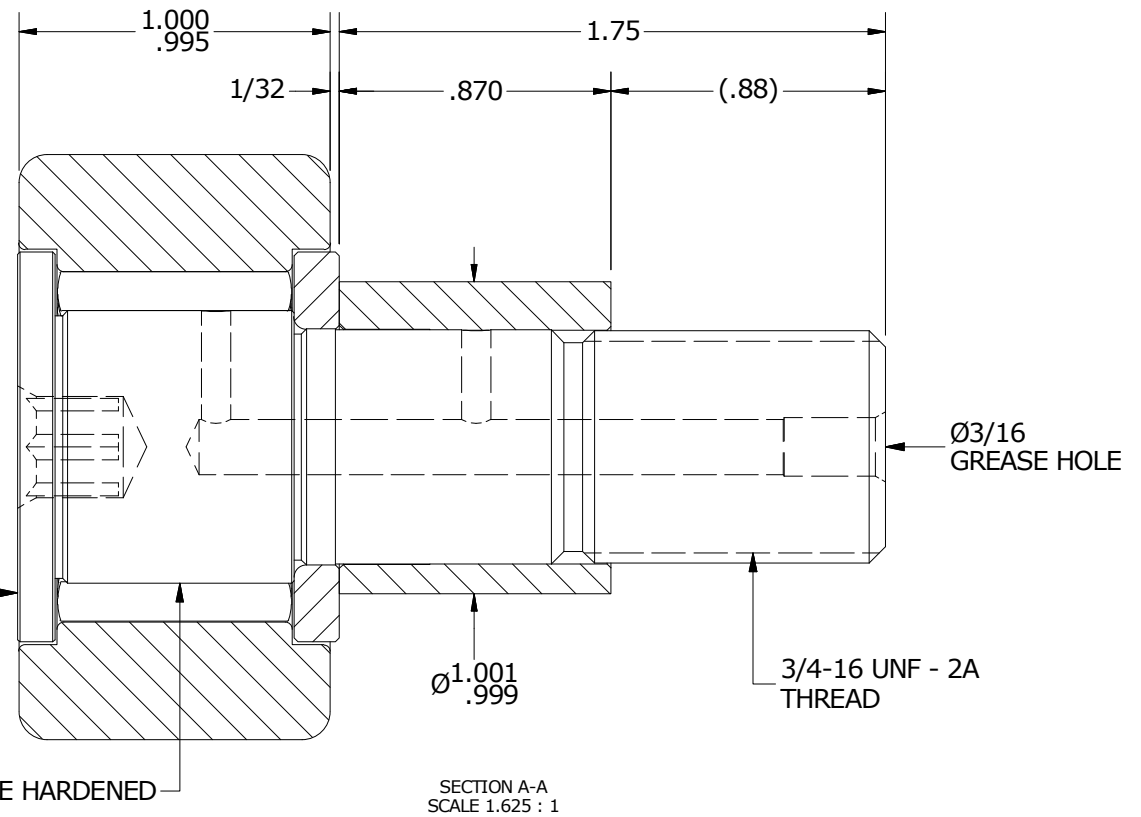
MS NO. _____ NSN NO. _____ DRAWING NO. _____



ISO VIEWS
SCALE .8125 : 1



END VIEW
SCALE 1.625 : 1



SECTION A-A
SCALE 1.625 : 1

MATERIAL NOTES:

OUTER RING - BEARING STEEL, HEAT TREATED
 STUD - BEARING STEEL, ZONE HARDENED
 NEEDLE ROLLERS - BEARING STEEL, HEAT TREATED
 WASHER - BEARING STEEL, HEAT TREATED
 ECCENTRIC SLEEVE - STEEL

CUSTOMER PART#	XX = ± .01 XXX = ± .005 XXXX = ± .0005 ANGLES = ± 1' INCH [METRIC] FRACTION = ± 1/32
ENGINEERING CHANGE ORDER NOTE	

CARTER MANUFACTURING IS NOT RESPONSIBLE FOR TYPOGRAPHICAL ERRORS		CARTER MANUFACTURING CO., INC. GRAND HAVEN, MICHIGAN 49417			
REVISION		PART NAME: Assembly		PRODUCT TYPE: CNBE	
B	AUTHOR BY HG	DRAWN BY JAF	CHK'D BY SGW	SALES KPR	MATERIAL NOTED
REVISION BY MD	DATE 8/13/2019	DATE 7/13/2006	DATE 8/12/2019	DATE 7/12/2006	SHEET 1 OF 2