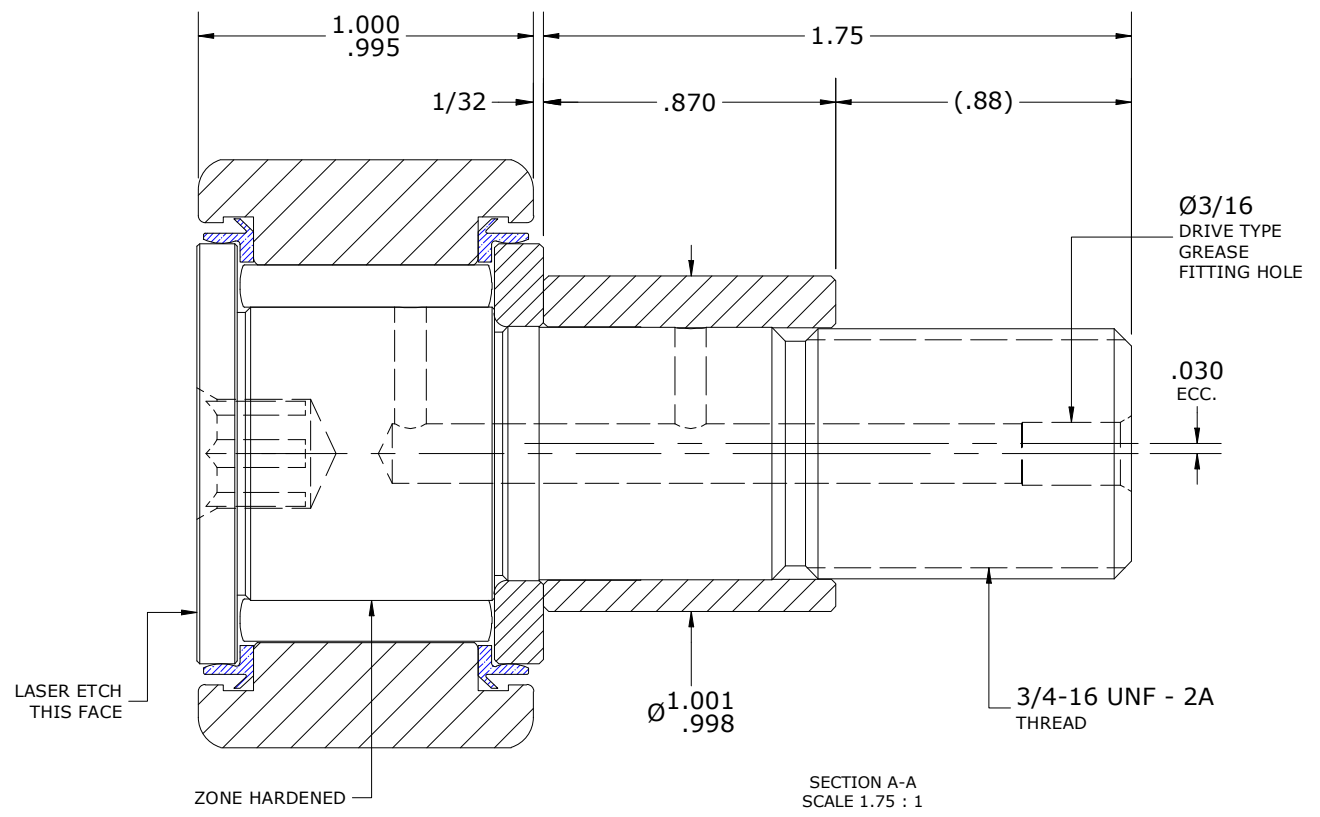
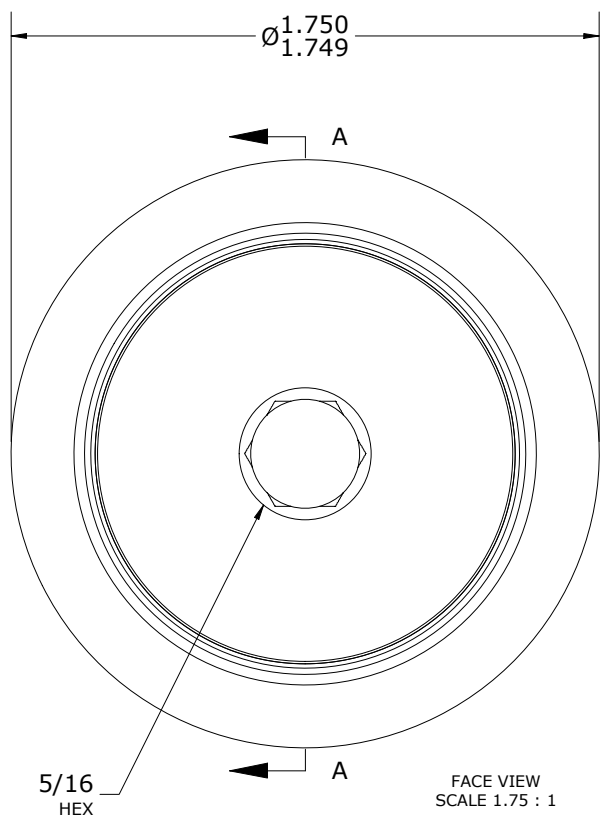
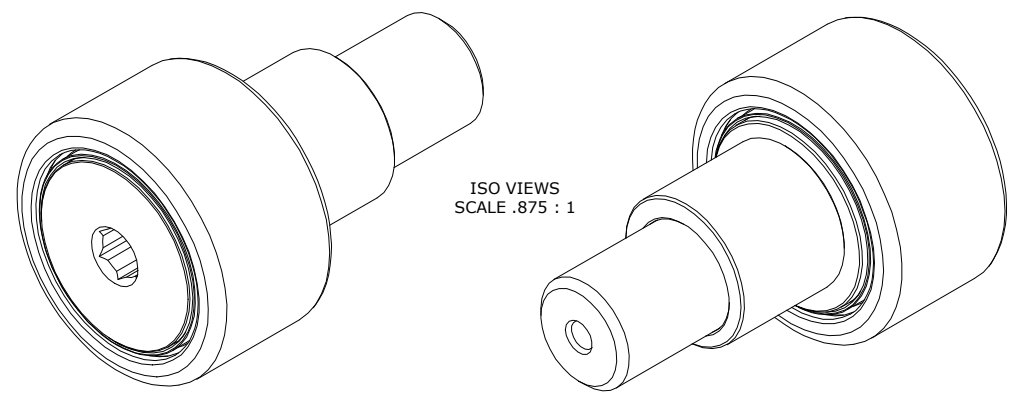


LOAD RATINGS		
RATING	lbf	Newtons
RADIAL BASIC DYNAMIC	6,385	28,402
MAXIMUM STATIC CAPACITY	7,920	35,230

RECOMMENDED MOUNTING HOLE Ø		
Limit	Inch	mm
MIN	1.002	25.451
MAX	1.004	25.502

MAXIMUM CLAMPING TORQUE**		
Thread Type	Inch lbf	Nm
LUBRICATED	625	70.6

- NOTES:
1. BEARING IS PACKED WITH NLGI GRADE 2, LITHIUM BASED GREASE (UNLESS OTHERWISE SPECIFIED)
 2. ALL EXPOSED STEEL SURFACES HAVE BLACK OXIDE
 3. CUSTOM LASER ETCHING UPON REQUEST
 4. LIMITING SPEED:
 - A. GREASE = 2,200 RPM



**(TORQUE SPECIFICATION IS BASED ON LUBRICATED THREADS, IF USING DRY THREADS DOUBLE TORQUE VALUE)

MATERIAL NOTES:

OUTER RING - BEARING STEEL, HEAT TREATED
STUD - BEARING STEEL, ZONE HARDENED
NEEDLE ROLLER(S) - BEARING STEEL, HEAT TREATED
WASHER - BEARING STEEL, HEAT TREATED
ECCENTRIC SLEEVE - STEEL
SEAL(S) - SYNTHETIC

CUSTOMER PART#	XX = ± .01 XXX = ± .005 XXXX = ± .0005 ANGLES = ± 2' INCH [METRIC] FRACTION = ± 1/64
ENGINEERING CHANGE ORDER NOTE	
CARTER STANDARD SURFACE FINISH IS MEASURED IN "Ra" UNITS UNLESS OTHERWISE SPECIFIED.	

CARTER MANUFACTURING IS NOT RESPONSIBLE FOR TYPOGRAPHICAL ERRORS				CARTER MANUFACTURING CO., INC. GRAND HAVEN, MICHIGAN 49417			
REVISION				PART NAME: ASSEMBLY		PRODUCT TYPE: Standard CF/YR	
E	AUTHOR BY	DRAWN BY	CHK'D BY	SALES	MATERIAL		
	HG	SGW	MD	NC	NOTED		
REVISION BY	DATE	DATE	DATE	DATE	SHEET		
DJB	2/19/2024	6/25/2008	2/19/2024	8/31/2023	1 OF 2		