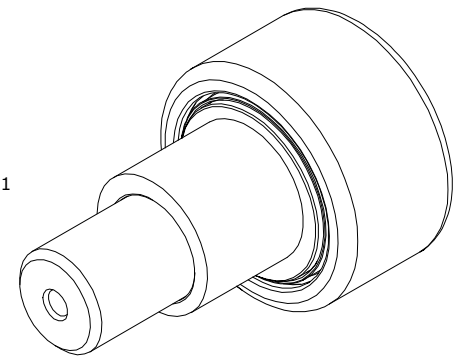
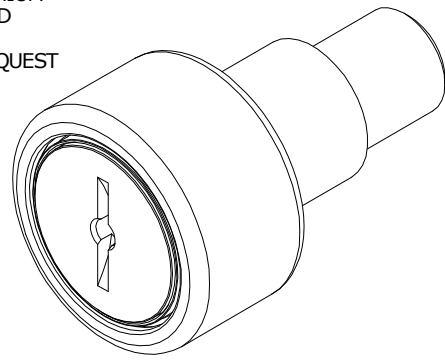


LOAD RATINGS		
RATING	lbf	Newtons
RADIAL BASIC DYNAMIC	6,385	28,402
MAXIMUM STATIC CAPACITY	7,920	35,230

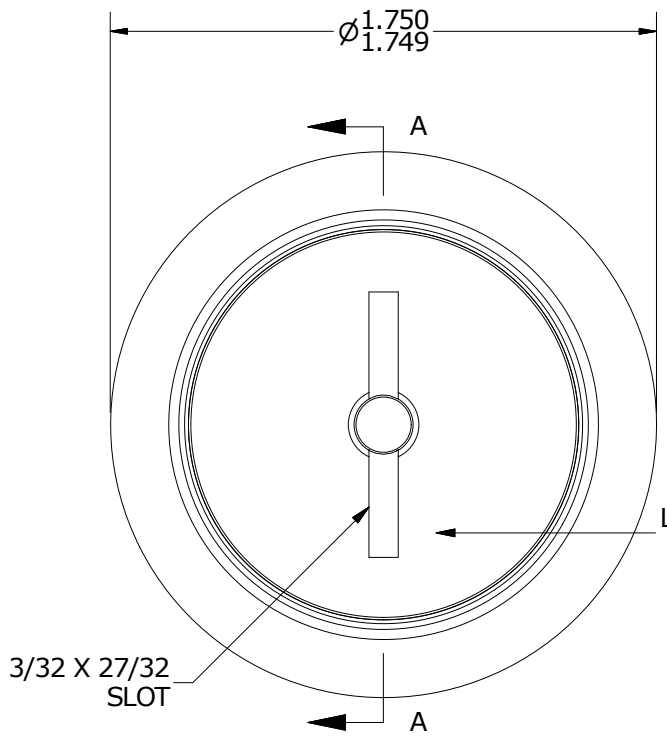
RECOMMENDED MOUNTING HOLE Ø		
Limit	Inch	mm
MIN	1.002	25.451
MAX	1.004	25.502

MAXIMUM CLAMPING TORQUE		
Thread Type	Inch lbf	Nm
DRY	1,250	141
LUBRICATED	625	70.5

- NOTES:
1. BEARING IS PACKED WITH NLGI GRADE 2, LITHIUM BASED GREASE UNLESS OTHERWISE SPECIFIED
  2. ALL EXPOSED SURFACES HAVE BLACK OXIDE
  3. CUSTOM LASER ETCHING AVAILABLE UPON REQUEST
  4. LIMITING SPEED:
    - A. GREASE = 2,200 RPM

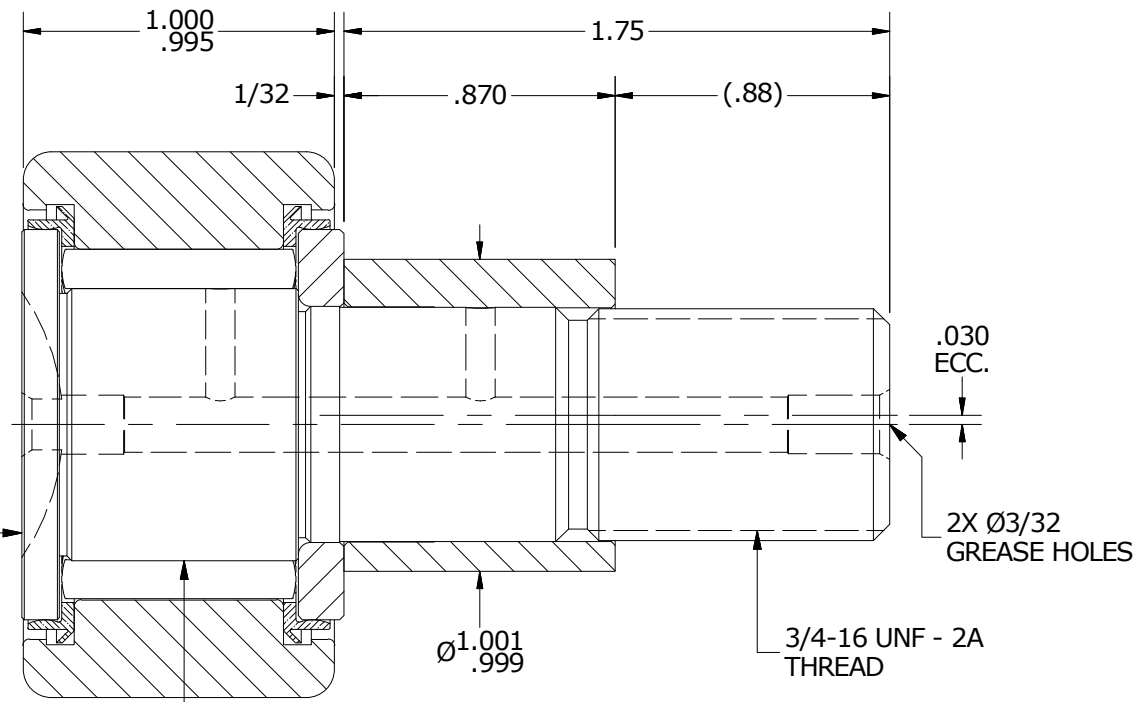


ISO VIEWS  
SCALE .8125 : 1



END VIEW  
SCALE 1.625 : 1

LASER ETCHING  
ON THIS FACE



SECTION A-A  
SCALE 1.625 : 1

MATERIAL NOTES:

- OUTER RING - BEARING STEEL, HEAT TREATED
- STUD - BEARING STEEL, ZONE HARDENED
- NEEDLE ROLLERS - BEARING STEEL, HEAT TREATED
- WASHER - BEARING STEEL, HEAT TREATED
- ECCENTRIC SLEEVE - STEEL
- SEALS - SYNTHETIC

CUSTOMER PART#	XX = ± .01 XXX = ± .005 XXXX = ± .0005 ANGLES = ± 1' INCH [METRIC] FRACTION = ± 1/32
ENGINEERING CHANGE ORDER NOTE	

CARTER MANUFACTURING IS NOT RESPONSIBLE FOR TYPOGRAPHICAL ERRORS

**CARTER MANUFACTURING CO., INC.**  
GRAND HAVEN, MICHIGAN 49417

REVISION		PART NAME: Assembly			PRODUCT TYPE: CNBE	
<b>B</b>	AUTHOR BY HG	DRAWN BY GJP	CHK'D BY SGW	SALES KPR	MATERIAL NOTED	
REVISION BY MD	DATE 8/13/2019	DATE 8/29/2000	DATE 8/12/2019	DATE 8/28/2000	SHEET 1 OF 2	