

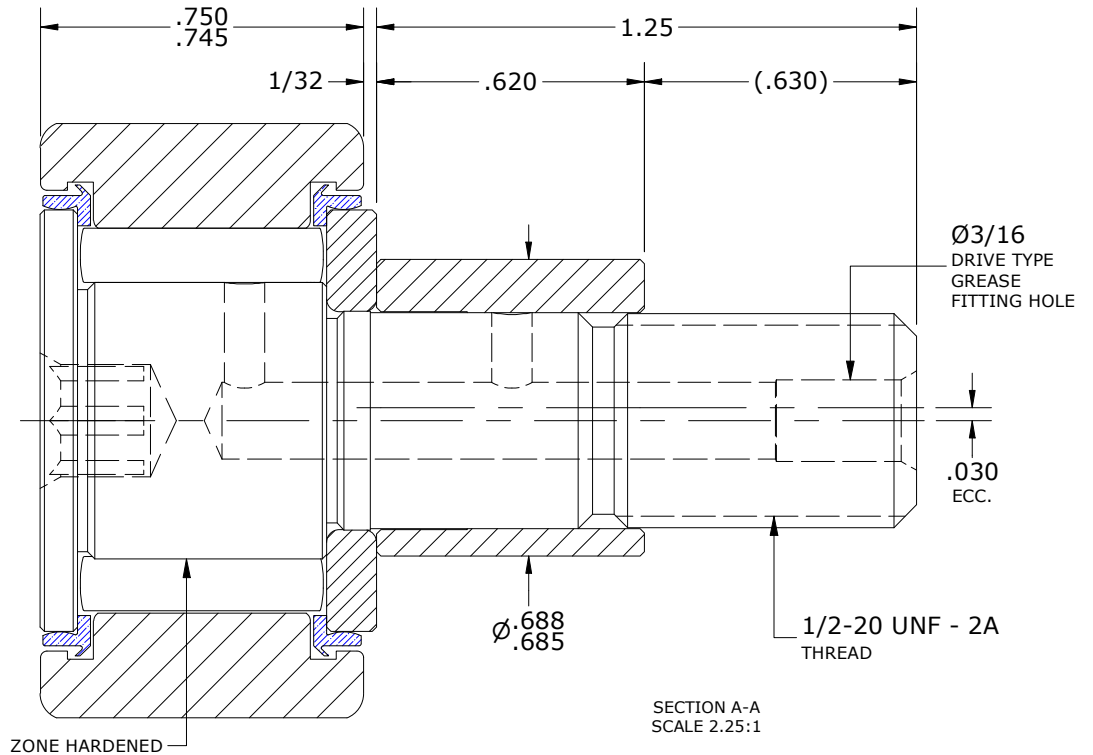
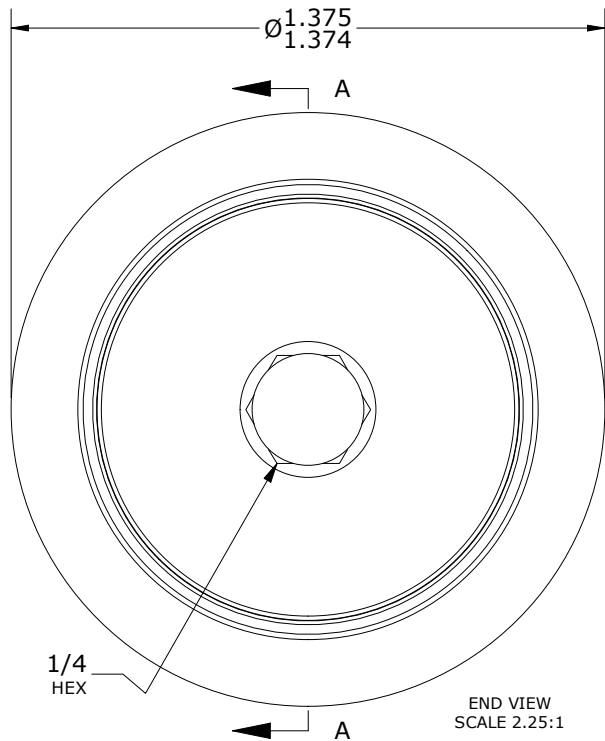
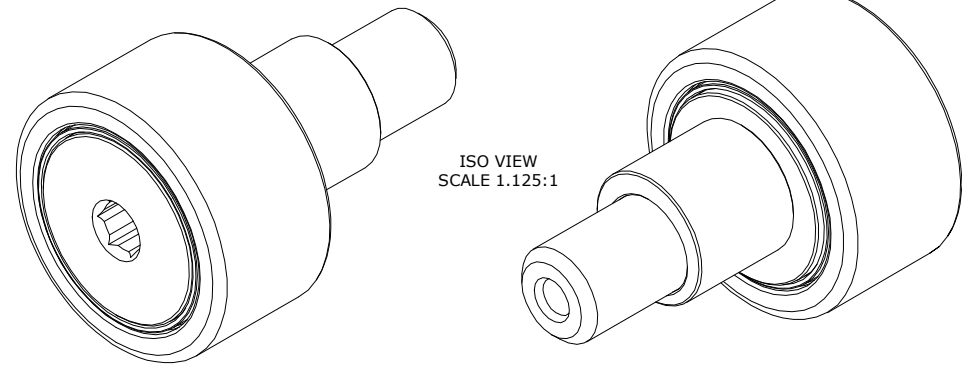
LOAD RATINGS		
RATING	lbf	Newtons
RADIAL BASIC DYNAMIC	3,930	17,481
MAXIMUM STATIC CAPACITY	4,250	18,904

DRAWING NO. CNBE-44-SB

RECOMMENDED MOUNTING HOLE Ø		
Limit	Inch	mm
MIN	.689	17.501
MAX	.691	17.551

- NOTES:
1. BEARING IS PACKED WITH NLGI GRADE 2, LITHIUM BASED GREASE (UNLESS OTHERWISE SPECIFIED).
 2. ALL EXPOSED SURFACES HAVE BLACK OXIDE.
 3. LIMITING SPEED:
A. GREASE = 3,100 RPM.
 4. CUSTOM LASER ETCHING AVAILABLE UPON REQUEST.

MAXIMUM CLAMPING TORQUE**		
Thread Type	Inch Lbs	Nm
LUBRICATED	175	20



**TORQUE SPECIFICATION IS BASED ON LUBRICATED THREADS, IF USING DRY THREADS DOUBLE TORQUE VALUE

MATERIAL NOTES:

OUTER RING: BEARING STEEL, HEAT TREATED
 STUD: BEARING STEEL, ZONE HARDENED
 NEEDLE ROLLER(S): BEARING STEEL, HEAT TREATED
 WASHER: BEARING STEEL, HEAT TREATED
 SEAL(S): SYNTHETIC
 ECCENTRIC SLEEVE: STEEL

CUSTOMER PART#	XX = ± .01 XXX = ± .005 XXXX = ± .0005 ANGLES = ± 2' INCH [METRIC] FRACTION = ± 1/64
ENGINEERING CHANGE ORDER NOTE	

CARTER MANUFACTURING IS NOT RESPONSIBLE FOR TYPOGRAPHICAL ERRORS				CARTER MANUFACTURING CO., INC. GRAND HAVEN, MICHIGAN 49417	
REVISION		PART NAME: ASSEMBLY		PRODUCT TYPE: Standard CF	
C	AUTHOR BY HG	DRAWN BY JAF	CHK'D BY MD	SALES NC	MATERIAL NOTED
REVISION BY SGW	DATE 2/27/2023	DATE 6/30/2006	DATE 2/27/2023	DATE 2/27/2023	SHEET 1 OF 2