

LOAD RATINGS		
RATING	lbf	Newtons
RADIAL BASIC DYNAMIC	2,225	9,897
MAXIMUM STATIC CAPACITY	3,060	13,611

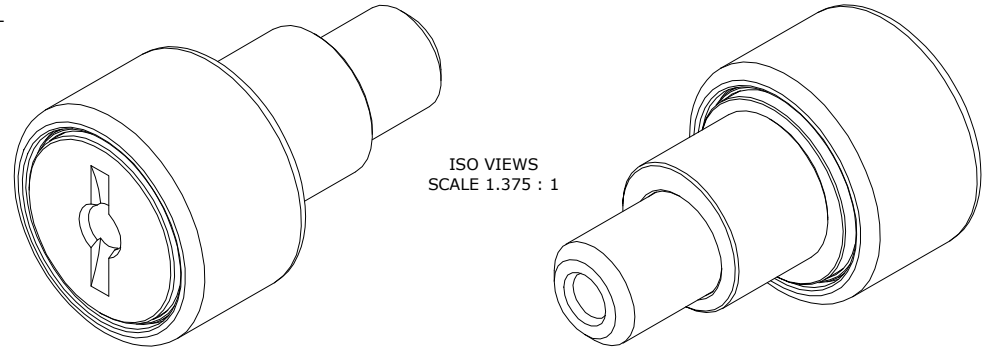
RECOMMENDED MOUNTING HOLE		
LIMIT	Inch	mm
MIN.	.627	15.926
MAX.	.629	15.977

MAXIMUM CLAMPING TORQUE **		
Thread Type	Inch lbf	Nm
LUBRICATED	125	14

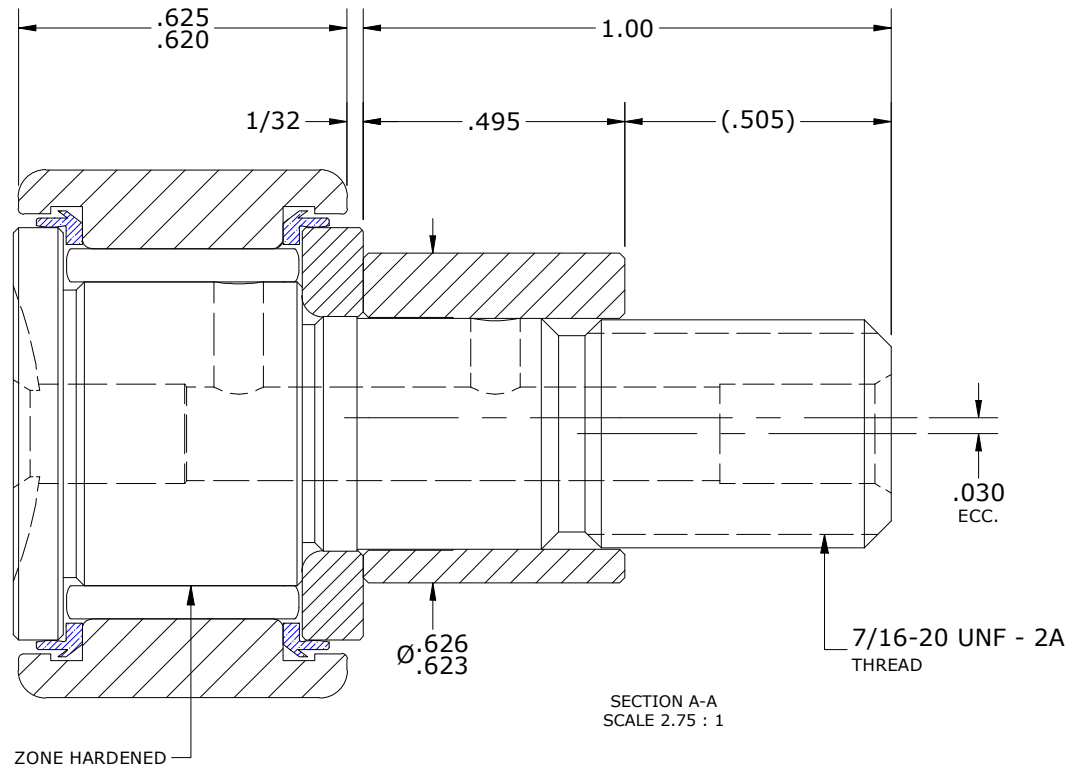
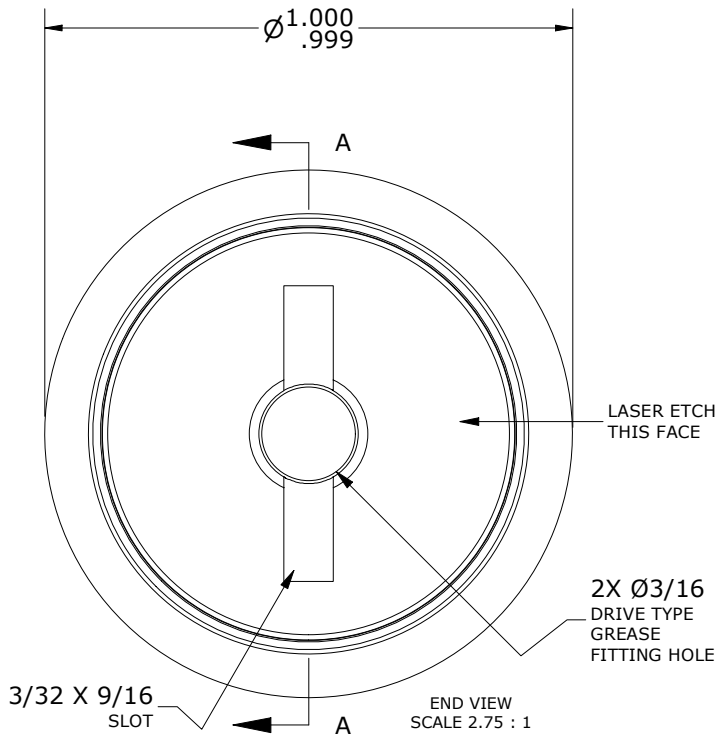
NOTES:

- BEARING IS PACKED WITH NLGI GRADE 2, LITHIUM BASED GREASE UNLESS OTHERWISE SPECIFIED
- ALL EXPOSED STEEL SURFACES HAVE BLACK OXIDE
- CUSTOM LASER ETCHING IS AVAILABLE UPON REQUEST
- LIMITING SPEED:
A. GREASE = 4,800 RPM

MS NO.	NSN NO.	DRAWING NO.	CNBE-32-S
--------	---------	-------------	-----------



ISO VIEWS
SCALE 1.375 : 1



** TORQUE SPECIFICATION IS BASED ON LUBRICATED THREADS, IF USING CLEAN DRY THREADS DOUBLE TORQUE VALUE

MATERIAL NOTES:

OUTER RING - BEARING STEEL, HEAT TREATED
 STUD - BEARING STEEL, ZONE HARDENED
 NEEDLE ROLLER(S) - BEARING STEEL, HEAT TREATED
 WASHER - BEARING STEEL, HEAT TREATED
 SEAL(S) - SYNTHETIC
 ECCENTRIC SLEEVE - STEEL

CUSTOMER PART#	XX = ± .01 XXX = ± .005 XXXX = ± .0005 ANGLES = ± 1' INCH [METRIC] FRACTION = ± 1/32
----------------	---

CARTER MANUFACTURING IS NOT RESPONSIBLE FOR TYPOGRAPHICAL ERRORS

CARTER MANUFACTURING CO., INC.
 GRAND HAVEN, MICHIGAN 49417

REVISION		PART NAME: ASSEMBLY		PRODUCT TYPE: CNB	
C	AUTHOR BY HG	DRAWN BY JAF	CHK'D BY MD	SALES NC	MATERIAL NOTED
REVISION BY SGW	DATE 1/12/2022	DATE 6/26/2006	DATE 1/12/2022	DATE 1/12/2022	SHEET 1 OF 2