

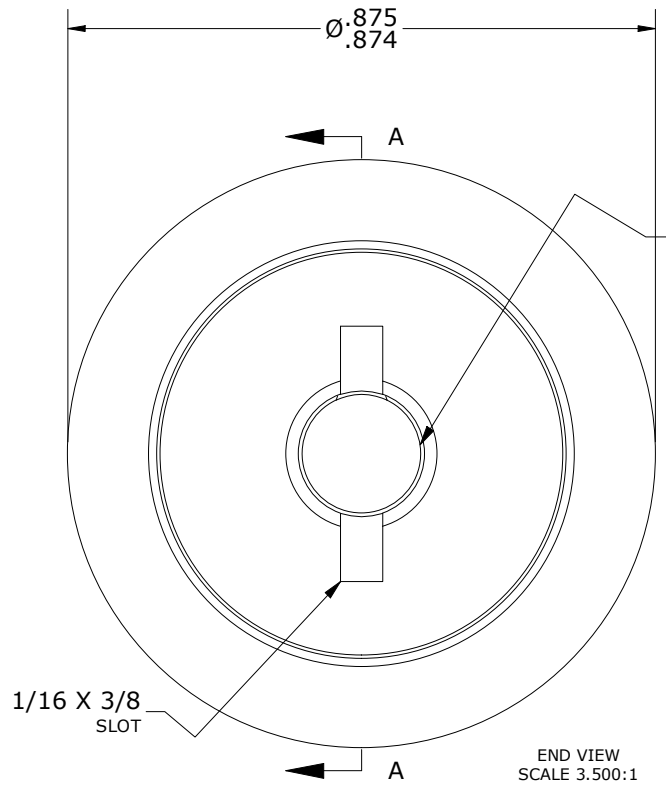
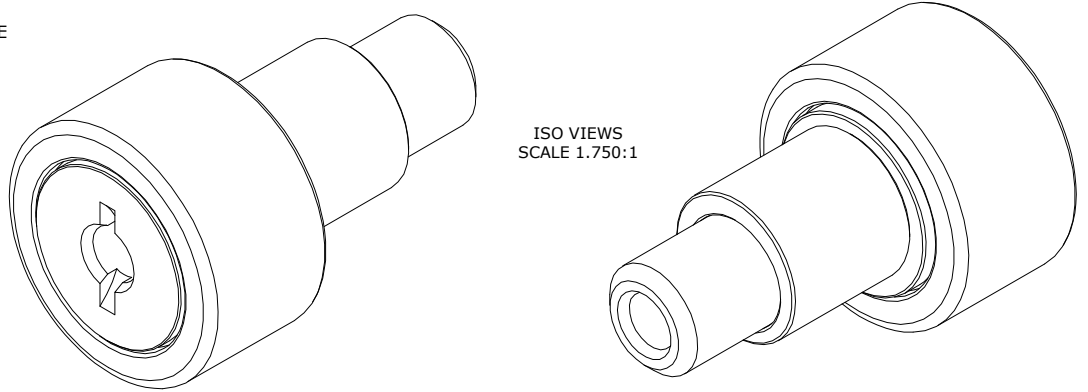
| LOAD RATINGS | | |
|-------------------------|-------|---------|
| RATING | lbf | Newtons |
| RADIAL BASIC DYNAMIC | 1,660 | 7,384 |
| MAXIMUM STATIC CAPACITY | 2,065 | 9,185 |

| RECOMMENDED MOUNTING HOLE Ø | | |
|-----------------------------|------|---------|
| Limit | Inch | mm |
| MIN | .502 | 12.7508 |
| MAX | .504 | 12.8016 |

| MAXIMUM CLAMPING TORQUE** | | |
|---------------------------|----------|-----|
| Thread Type | Inch Lbs | Nm |
| LUBRICATED | 47.5 | 5.5 |

- NOTES:
1. BEARING IS PACKED WITH NLGI GRADE 2, LITHIUM BASED GREASE (UNLESS OTHERWISE SPECIFIED)
 2. ALL EXPOSED STEEL SURFACES HAVE BLACK OXIDE
 3. CUSTOM LASER ETCHING UPON REQUEST
 4. LIMITING SPEED:
A. GREASE = 5,400 RPM

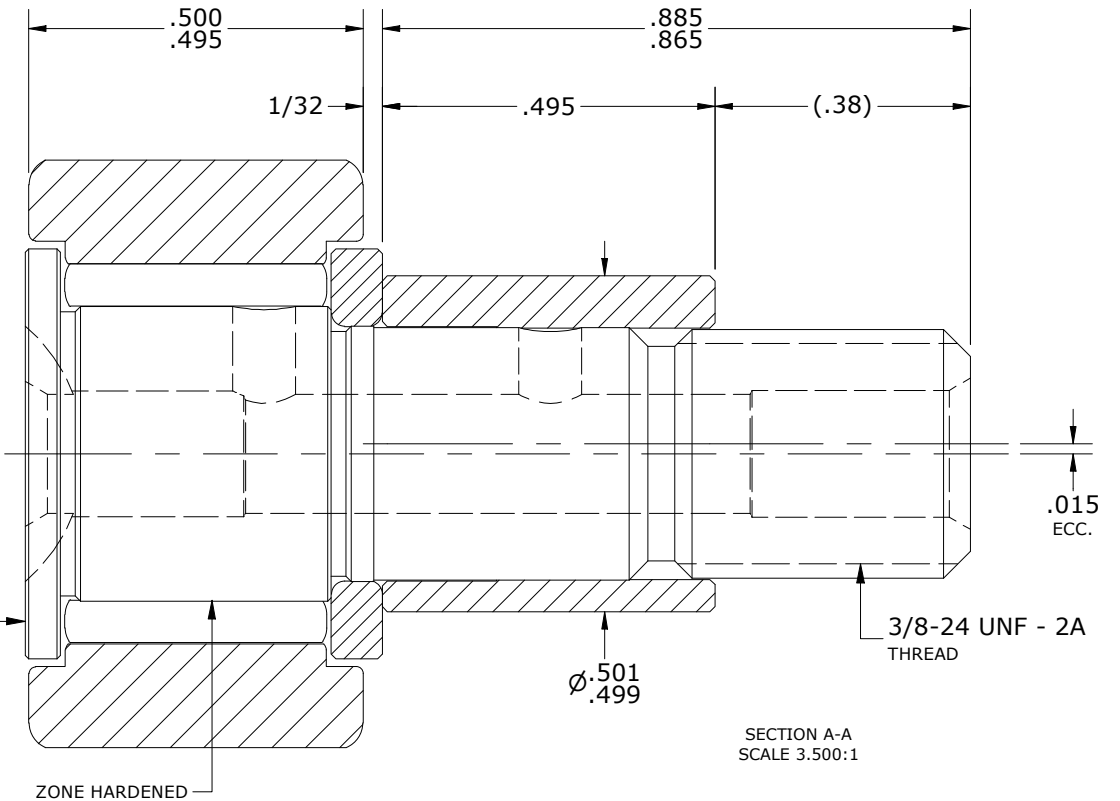
MS NO. _____ NSN NO. _____ DRAWING NO. CNBE-28



2X Ø3/16
DRIVE TYPE
GREASE
FITTING HOLE

LASER ETCH
THIS FACE

END VIEW
SCALE 3.500:1



SECTION A-A
SCALE 3.500:1

**TORQUE SPECIFICATION IS BASED ON LUBRICATED THREADS, IF USING DRY THREADS DOUBLE TORQUE VALUE

MATERIAL NOTES:

- OUTER RING - BEARING STEEL, HEAT TREATED
- STUD - BEARING STEEL, ZONE HARDENED
- NEEDLE ROLLER(S) - BEARING STEEL, HEAT TREATED
- WASHER - BEARING STEEL, HEAT TREATED
- ECCENTRIC SLEEVE - STEEL

CUSTOMER PART# _____
XX = ± .01
XXX = ± .005
XXXX = ± .0005
ANGLES = ± 1'
INCH [METRIC]
FRACTION = ± 1/32

CARTER MANUFACTURING IS
NOT RESPONSIBLE FOR
TYPOGRAPHICAL ERRORS

CARTER MANUFACTURING CO., INC.
GRAND HAVEN, MICHIGAN 49417

ENGINEERING CHANGE ORDER NOTE

| REVISION | | PART NAME: ASSEMBLY | | | PRODUCT TYPE: CNBE | |
|----------|-------------|---------------------|----------|----------|--------------------|-------|
| C | AUTHOR BY | DRAWN BY | CHK'D BY | SALES | MATERIAL | |
| | HG | JAF | MD | NC | NOTED | |
| | REVISION BY | DATE | DATE | DATE | DATE | SHEET |
| SGW | 6/4/2020 | 6/23/2006 | 6/4/2020 | 6/4/2020 | 1 OF 2 | |