

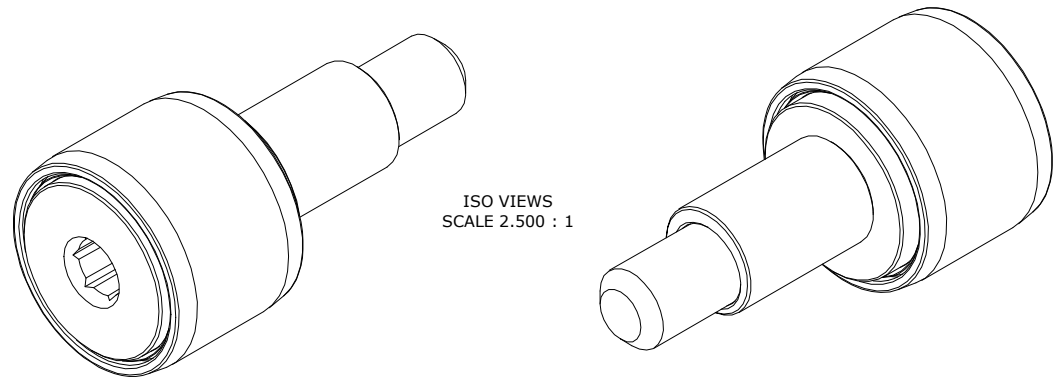
LOAD RATINGS		
RATING	lbf	Newtons
RADIAL BASIC DYNAMIC	680	3,025
MAXIMUM STATIC CAPACITY	790	3,514

NOTES:

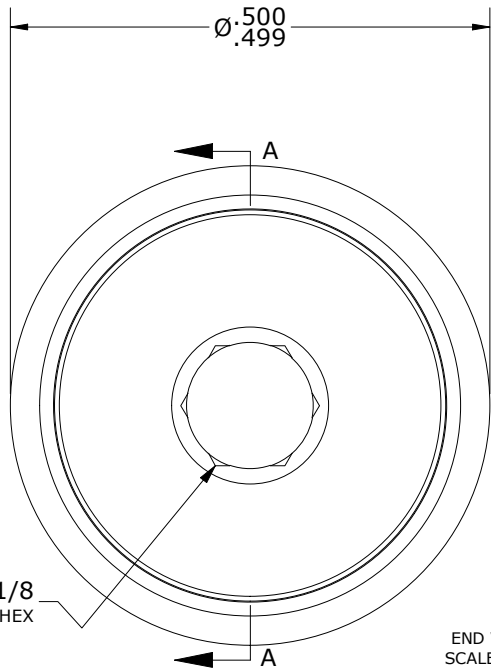
1. BEARING IS PACKED WITH NLGI GRADE 2, LITHIUM BASED GREASE (UNLESS OTHERWISE SPECIFIED)
2. ALL EXPOSED STEEL SURFACES HAVE BLACK OXIDE
3. CUSTOM LASER ETCHING UPON REQUEST
4. LIMITING SPEED:
 - A. GREASE = 11,500 RPM

RECOMMENDED MOUNTING HOLE Ø		
Limit	Inch	mm
MIN	.252	6.4008
MAX	.254	6.4516

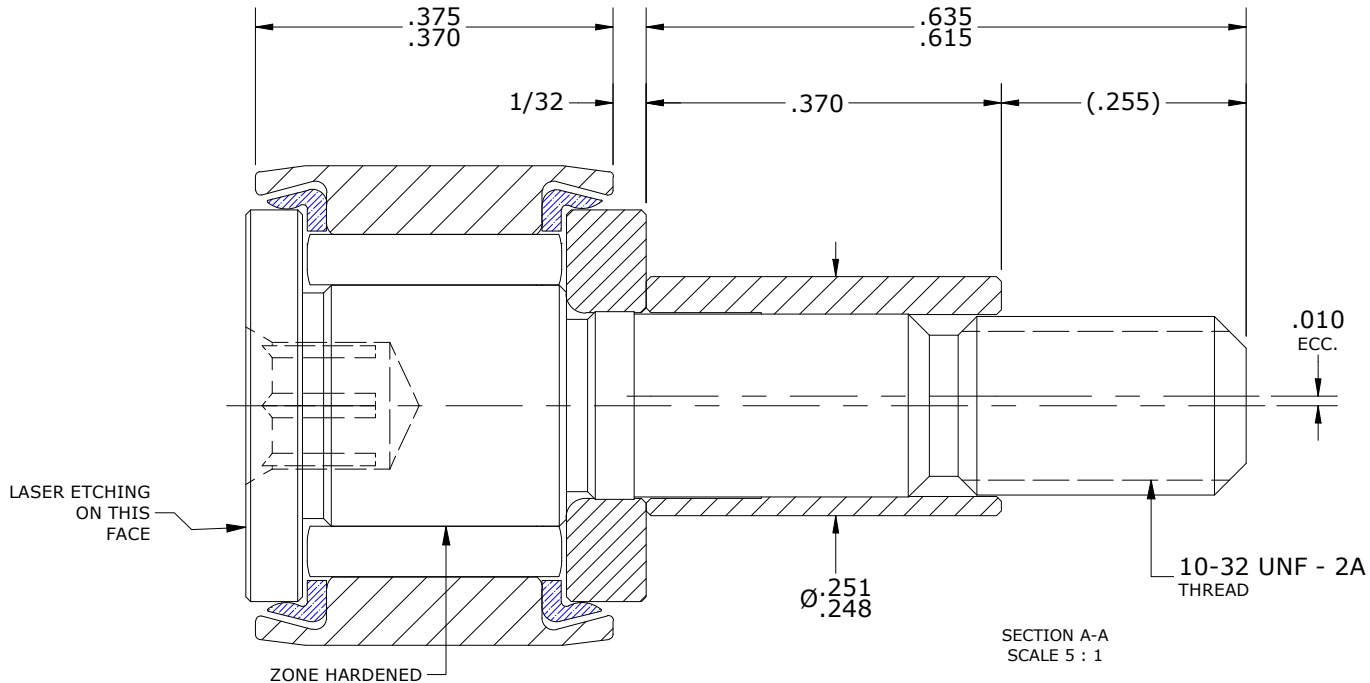
MAXIMUM CLAMPING TORQUE**		
Thread Type	Inch Lbs	Nm
LUBRICATED	7.5	.85



ISO VIEWS
SCALE 2.500 : 1



END VIEW
SCALE 5 : 1



SECTION A-A
SCALE 5 : 1

**TORQUE SPECIFICATION IS BASED ON LUBRICATED THREADS, IF USING DRY THREADS DOUBLE TORQUE VALUE

MATERIAL NOTES:

- OUTER RING - BEARING STEEL, HEAT TREATED
- STUD - BEARING STEEL, ZONE HARDENED
- NEEDLE ROLLER(S) - BEARING STEEL, HEAT TREATED
- WASHER - BEARING STEEL, HEAT TREATED
- SEAL(S) - SYNTHETIC
- ECCENTRIC SLEEVE - STEEL

CUSTOMER PART#

XX = ± .01
 XXX = ± .005
 XXXX = ± .0005
 ANGLES = ± 1'
 INCH [METRIC]
 FRACTION = ± 1/32

CARTER MANUFACTURING IS NOT RESPONSIBLE FOR TYPOGRAPHICAL ERRORS

CARTER MANUFACTURING CO., INC.

GRAND HAVEN, MICHIGAN 49417

ENGINEERING CHANGE ORDER NOTE

REVISION

PART NAME: ASSEMBLY

PRODUCT TYPE: CNB

D

AUTHOR BY

DRAWN BY

CHK'D BY

SALES

MATERIAL

HG

AJH

MD

NC

NOTED

REVISION BY

DATE

DATE

DATE

DATE

SHEET

SGW

11/2/2022

4/12/2002

11/2/2022

11/2/2022

1 OF 2