

LOAD RATINGS		
RATING	Lbs	Newtons
RADIAL BASIC DYNAMIC	22,800	101,419
MAXIMUM STATIC CAPACITY	44,770	199,147

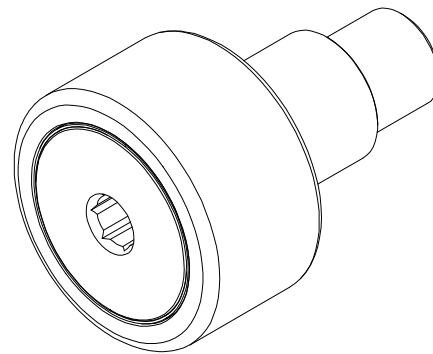
NOTES:

1. BEARING IS PACKED WITH NLGI GRADE 2, LITHIUM BASED GREASE (UNLESS OTHERWISE SPECIFIED).
2. ALL EXPOSED SURFACES HAVE BLACK OXIDE.
3. LIMITING SPEED:
A. GREASE = 700 RPM.
4. CUSTOM LASER ETCHING AVAILABLE UPON REQUEST.

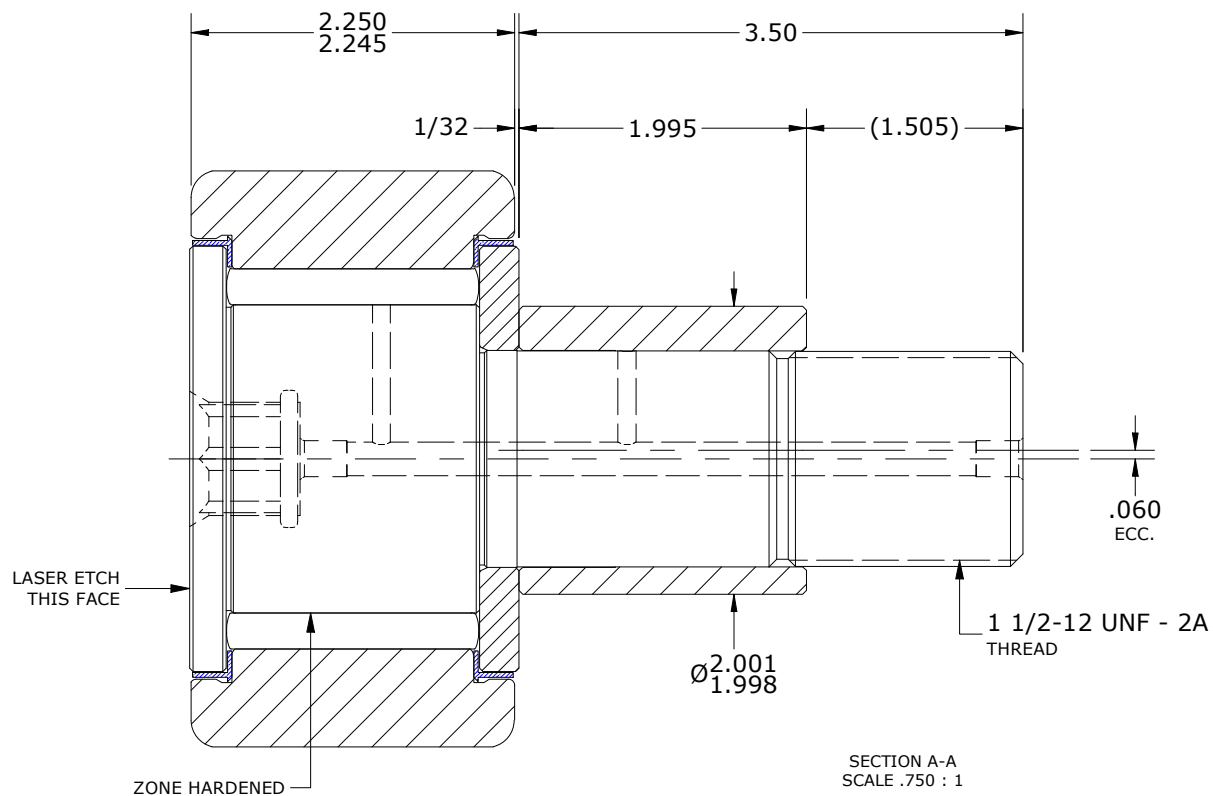
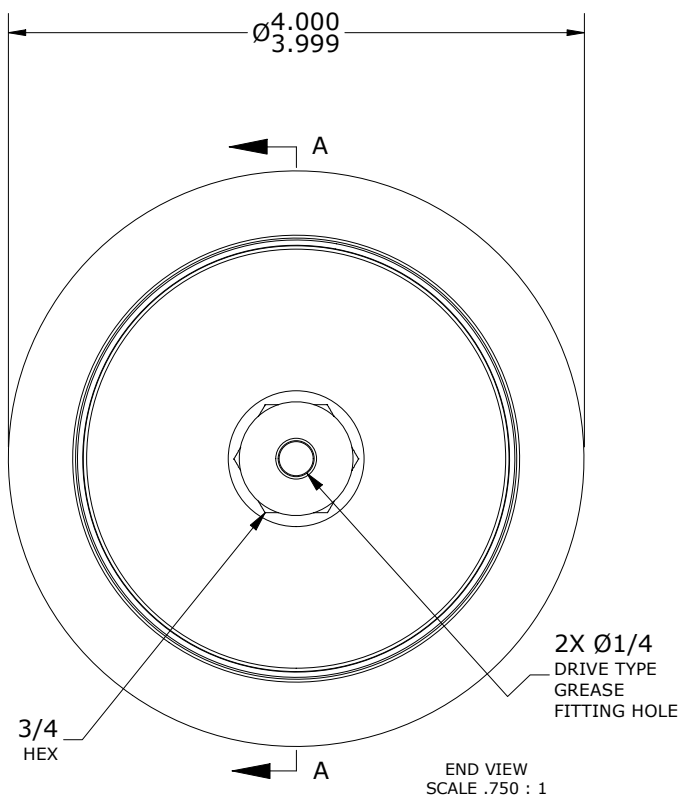
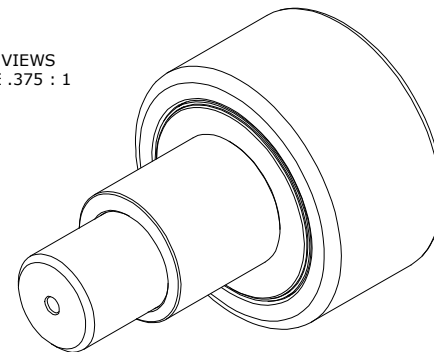
MS NO.	NSN NO.	DRAWING NO.
--------	---------	-------------

RECOMMENDED MOUNTING HOLE Ø		
Limit	Inch	mm
MIN	2.002	50.8508
MAX	2.004	50.9016

MAXIMUM CLAMPING TORQUE**		
Thread Type	Inch Lbs	Nm
LUBRICATED	2,500	282.5



ISO VIEWS
SCALE .375 : 1



**TORQUE SPECIFICATION IS BASED ON LUBRICATED THREADS, IF USING DRY THREADS DOUBLE TORQUE VALUE

MATERIAL NOTES:

- OUTER RING - BEARING STEEL, HEAT TREATED
- STUD - BEARING STEEL, ZONE HARDENED
- NEEDLE ROLLER(S) - BEARING STEEL, HEAT TREATED
- WASHER - STEEL, HEAT TREATED
- ECCENTRIC SLEEVE - STEEL
- SEAL(S) - SYNTHETIC

CUSTOMER PART#

XX = ± .01
XXX = ± .005
XXXX = ± .0005
ANGLES = ± 1'
INCH [METRIC]
FRACTION = ± 1/32

CARTER MANUFACTURING IS NOT RESPONSIBLE FOR TYPOGRAPHICAL ERRORS

CARTER MANUFACTURING CO., INC.

GRAND HAVEN, MICHIGAN 49417

ENGINEERING CHANGE ORDER NOTE

REVISION

PART NAME: ASSEMBLY

PRODUCT TYPE: CNB

C

AUTHOR BY

DRAWN BY

CHK'D BY

SALES

MATERIAL

HG

JAF

MD

NC

NOTED

REVISION BY

DATE

DATE

DATE

DATE

SHEET

SGW

10/19/2021

7/5/2006

10/19/2021

10/7/2020

1 OF 2