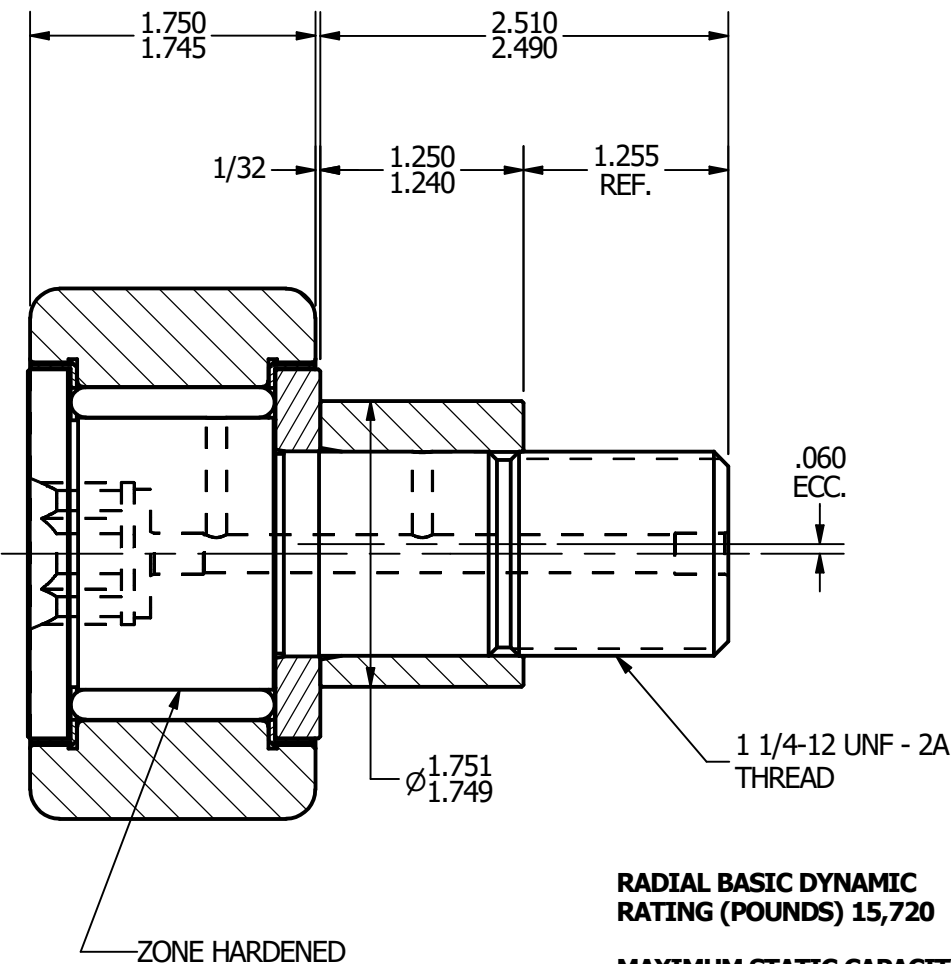
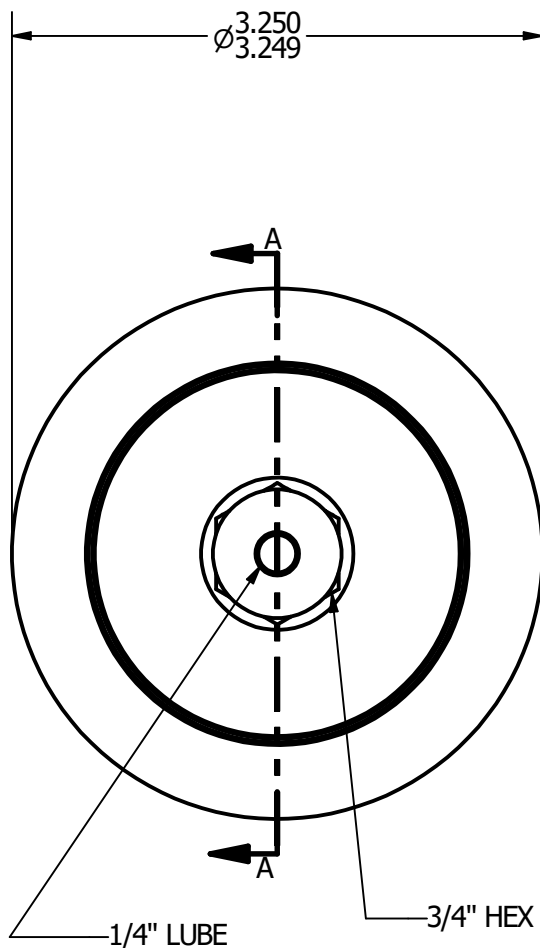
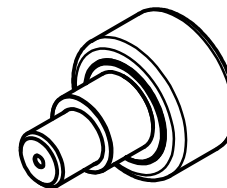


- NOTES:**  
 1. BEARING IS PACKED WITH GREASE  
 2. ALL EXPOSED SURFACES ARE BLACK OXIDED



**RADIAL BASIC DYNAMIC RATING (POUNDS) 15,720**  
**MAXIMUM STATIC CAPACITY (POUNDS) 24,910**

**MATERIAL NOTES:**

<b>OUTER - BEARING STEEL, HEAT TREATED</b>
<b>STUD - BEARING STEEL, ZONE HARDENED</b>
<b>ROLLER - BEARING STEEL, HEAT TREATED</b>
<b>WASHER - COLD ROLLED STEEL, HEAT TREATED</b>
<b>ECCENTRIC SLEEVE - COLD ROLLED STEEL</b>
<b>SEAL - SYNTHETIC</b>

CUSTOMER PART#	.XX = ± .01 .XXX = ± .005 .XXXX = ± .0005 ANGLES = ± 1' INCH [METRIC]
CHANGE NOTE:	

CARTER MANUFACTURING IS NOT RESPONSIBLE FOR TYPOGRAPHICAL ERRORS

REVISION	
<b>A</b>	<b>AUTHOR. BY</b> JGV
	<b>DATE</b> 7/10/2006

**CARTER MANUFACTURING CO., INC.**  
 GRAND HAVEN, MICHIGAN 49417

PART NAME: <b>Assembly</b>		SHEET 1 OF 2			
<b>REVISION</b>	<b>AUTHOR. BY</b>	<b>DRAWN BY</b>	<b>CHK'D BY</b>	<b>SALES</b>	<b>MATERIAL</b>
	JGV	JAF	JGV	KPR	NOTED
	<b>DATE</b>	<b>DATE</b>	<b>DATE</b>	<b>DATE</b>	<b>DRAWING NO.</b>
	7/10/2006	7/10/2006	7/10/2006	7/10/2006	CNBE-104-SB