

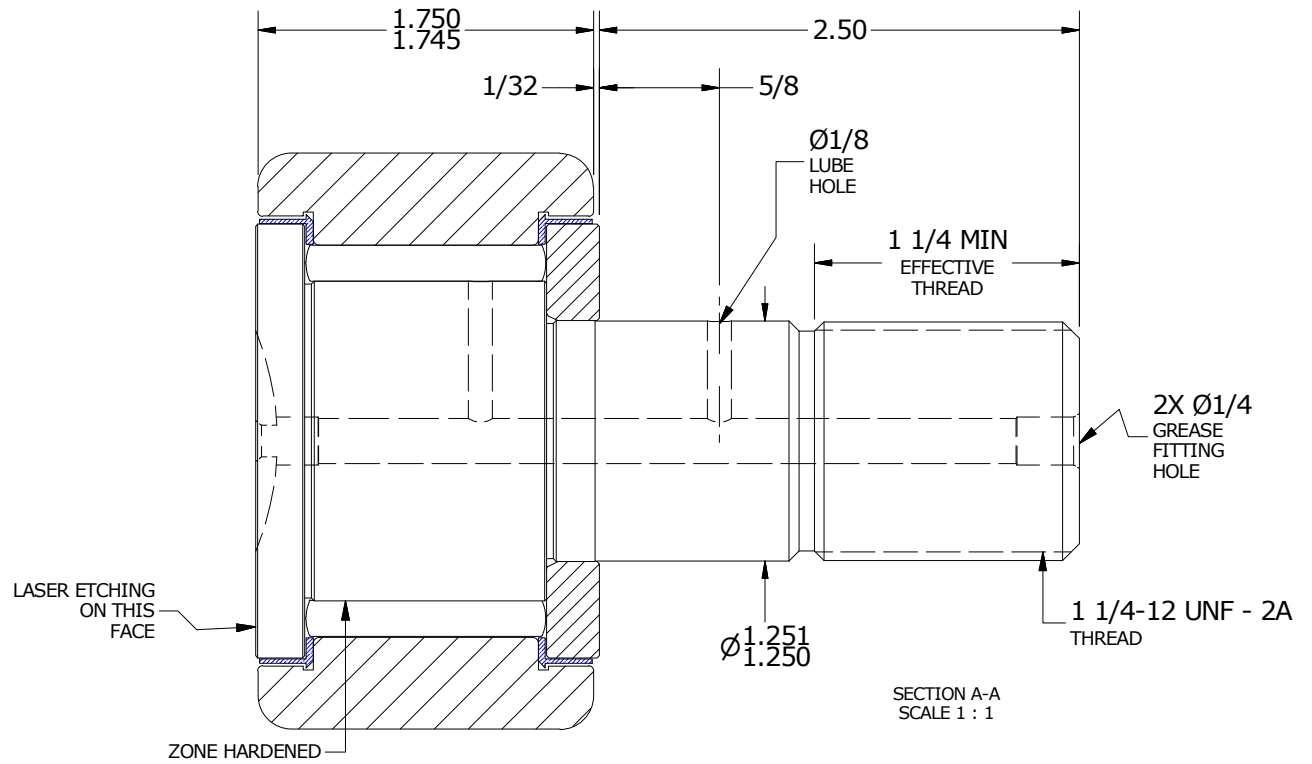
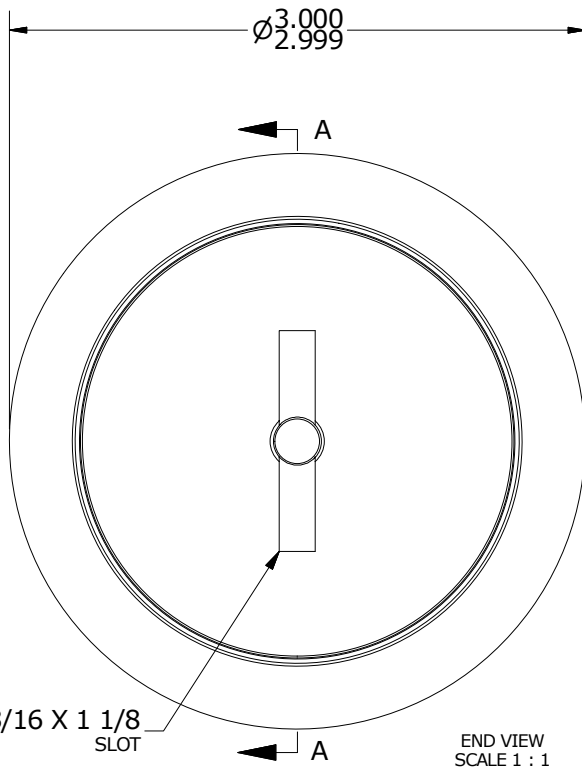
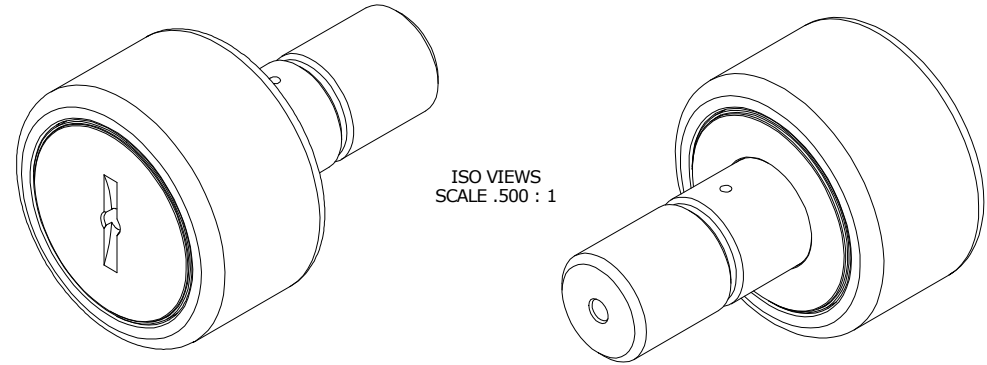
LOAD RATINGS		
RATING	lbf	Newtons
RADIAL BASIC DYNAMIC	15,720	69,926
MAXIMUM STATIC CAPACITY	24,910	110,805

RECOMMENDED MOUNTING HOLE Ø		
Limit	Inch	mm
MIN	1.2500	31.7500
MAX	1.2505	31.7627

MAXIMUM CLAMPING TORQUE		
Thread Type	Inch lbf	Nm
DRY	3,450	390
LUBRICATED	1,725	195

- NOTES:
1. BEARING IS PACKED WITH NLGI GRADE 2, LITHIUM BASED GREASE (UNLESS OTHERWISE SPECIFIED)
 2. ALL EXPOSED STEEL SURFACES HAVE BLACK OXIDE
 3. CUSTOM LASER ETCHING UPON REQUEST
 4. LIMITING SPEED:
 - A. GREASE = 950 RPM

MS NO. _____ NSN NO. _____ DRAWING NO. CNB-96-S



MATERIAL NOTES:

- OUTER RING - BEARING STEEL, HEAT TREATED
- STUD - BEARING STEEL, ZONE HARDENED
- NEEDLE ROLLER(S) - BEARING STEEL, HEAT TREATED
- WASHER - STEEL, HEAT TREATED
- SEAL(S) - SYNTHETIC

CUSTOMER PART# _____
 XX = ± .01
 XXX = ± .005
 XXXX = ± .0005
 ANGLES = ± 1'
 INCH [METRIC]
 FRACTION = ± 1/32

CARTER MANUFACTURING IS NOT RESPONSIBLE FOR TYPOGRAPHICAL ERRORS

CARTER MANUFACTURING CO., INC.
 GRAND HAVEN, MICHIGAN 49417

ENGINEERING CHANGE ORDER NOTE

REVISION		PART NAME: ASSEMBLY		PRODUCT TYPE: CNB	
A	AUTHOR BY RAM	DRAWN BY GJP	CHK'D BY RAM	SALES KPR	MATERIAL NOTED
REVISION BY SGW	DATE 11/16/1999	DATE 11/16/1999	DATE 11/16/1999	DATE 11/15/1999	SHEET 1 OF 2