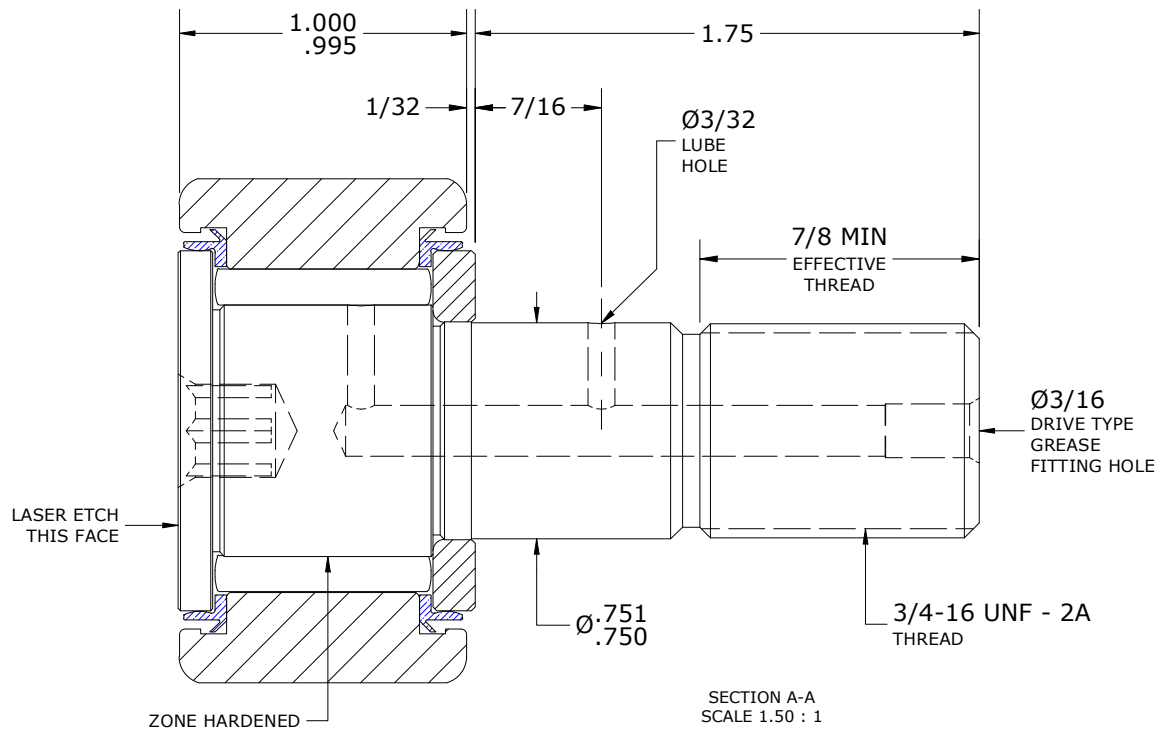
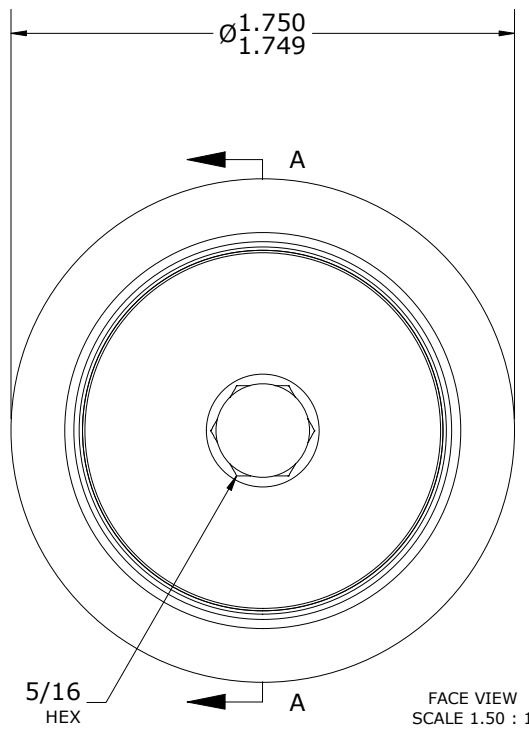
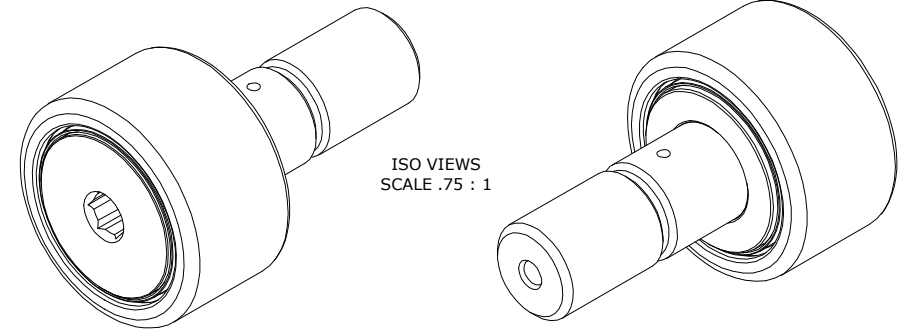


LOAD RATINGS		
RATING	lbf	Newtons
RADIAL BASIC DYNAMIC	5,730	25,488
MAXIMUM STATIC CAPACITY	6,000	26,689

- NOTES:
1. BEARING IS PACKED WITH NLGI 2, FOOD GRADE, H1 GREASE (UNLESS OTHERWISE SPECIFIED)
 2. ALL EXPOSED SURFACES, AS MOUNTED, HAVE CHROME PLATE
 3. CUSTOM LASER ETCHING IS AVAILABLE UPON REQUEST
 4. LIMITING SPEED:
 - A. GREASE = 2,200 RPM

RECOMMENDED MOUNTING HOLE Ø		
Limit	Inch	mm
MIN	.7500	19.0500
MAX	.7505	19.0627

MAXIMUM CLAMPING TORQUE**		
Thread Type	Inch lbf	Nm
LUBRICATED	625	70.6



** (TORQUE SPECIFICATION IS BASED ON LUBRICATED THREADS, IF USING DRY THREADS DOUBLE TORQUE VALUE)

MATERIAL NOTES:

OUTER RING - BEARING STEEL, HEAT TREATED

STUD - BEARING STEEL, ZONE HARDENED

NEEDLE ROLLER(S) - 440C STAINLESS STEEL, HEAT TREATED

WASHER - BEARING STEEL, HEAT TREATED

SEAL(S) - SYNTHETIC

CUSTOMER PART#	XX = ± .01 XXX = ± .005 XXXX = ± .0005 ANGLES = ± 2' INCH [METRIC] FRACTION = ± 1/64
ENGINEERING CHANGE ORDER NOTE	
CARTER STANDARD SURFACE FINISH IS MEASURED IN "Ra" UNITS UNLESS OTHERWISE SPECIFIED.	

CARTER MANUFACTURING IS NOT RESPONSIBLE FOR TYPOGRAPHICAL ERRORS				CARTER MANUFACTURING CO., INC. GRAND HAVEN, MICHIGAN 49417			
REVISION				PART NAME: ASSEMBLY		PRODUCT TYPE: Standard CF/YR, CHROME PLATED	
C	AUTHOR BY HG	DRAWN BY SGW	CHK'D BY MD	SALES NC	MATERIAL NOTED		
REVISION BY DJB	DATE 8/30/2023	DATE 12/4/2008	DATE 8/30/2023	DATE 8/31/2023	SHEET 1 OF 2		