

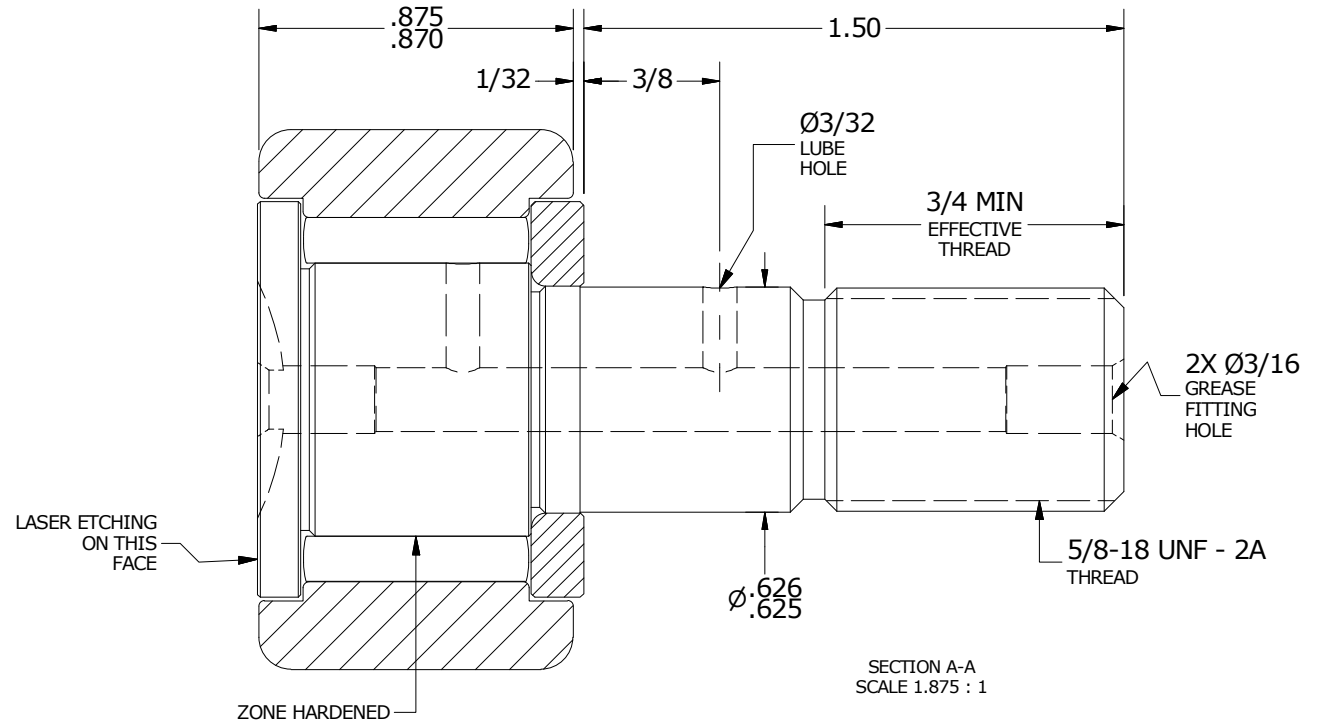
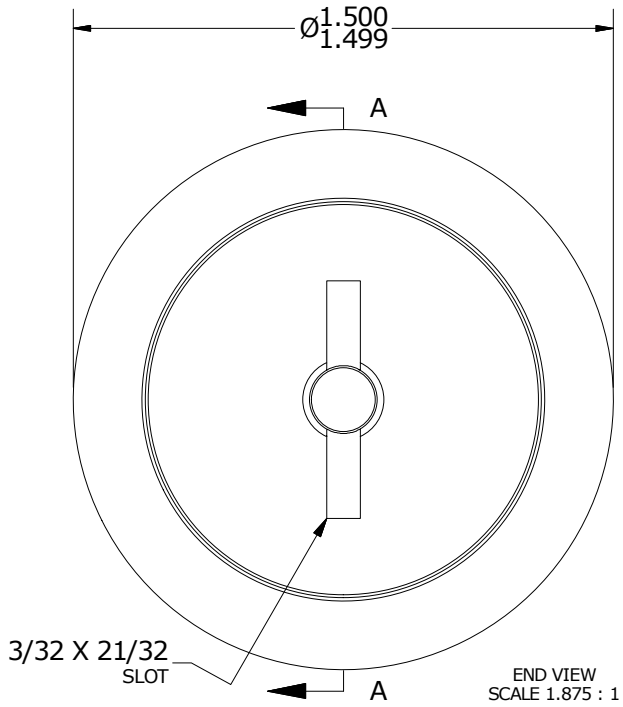
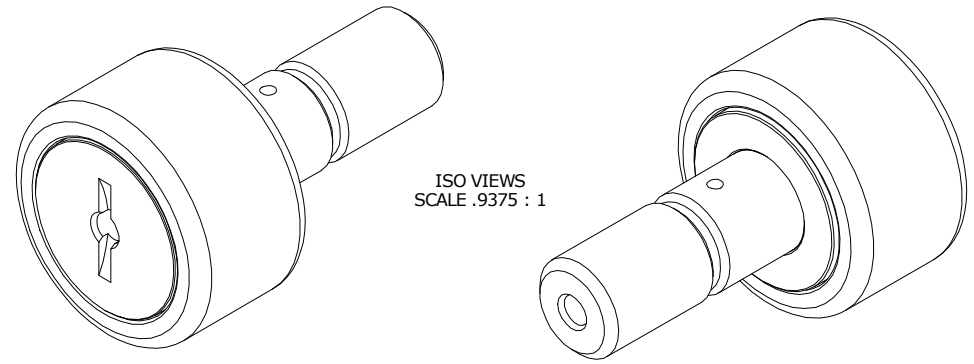
LOAD RATINGS		
RATING	lbf	Newtons
RADIAL BASIC DYNAMIC	4,840	21,529
MAXIMUM STATIC CAPACITY	5,640	25,088

RECOMMENDED MOUNTING HOLE Ø		
Limit	Inch	mm
MIN	.6250	15.875
MAX	.6255	15.888

MAXIMUM CLAMPING TORQUE		
Thread Type	Inch Lbs	Nm
DRY	650	73
LUBRICATED	325	36.5

- NOTES:
1. BEARING IS PACKED WITH NLGI GRADE 2, LITHIUM BASED GREASE (UNLESS OTHERWISE SPECIFIED)
 2. ALL EXPOSED STEEL SURFACES HAVE BLACK OXIDE
 3. LIMITING SPEED:
 - A. GREASE = 2,500 RPM
 4. CUSTOM LASER ETCHING UPON REQUEST

MS NO. _____ NSN NO. _____ DRAWING NO. CNB-48



MATERIAL NOTES:

- OUTER RING - BEARING STEEL, HEAT TREATED
- STUD - BEARING STEEL, ZONE HARDENED
- NEEDLE ROLLER(S) - BEARING STEEL, HEAT TREATED
- WASHER - BEARING STEEL, HEAT TREATED

CUSTOMER PART#

XX = ± .01
 XXX = ± .005
 XXXX = ± .0005
 ANGLES = ± 1'
 INCH [METRIC]
 FRACTION = ± 1/32

CARTER MANUFACTURING IS NOT RESPONSIBLE FOR TYPOGRAPHICAL ERRORS

CARTER MANUFACTURING CO., INC.
 GRAND HAVEN, MICHIGAN 49417

ENGINEERING CHANGE ORDER NOTE

REVISION	
C	AUTHOR BY DB
REVISION BY SGW	DATE 3/25/2013

PART NAME: ASSEMBLY				PRODUCT TYPE: CNB	
DRAWN BY JAF	CHK'D BY SGW	SALES KR	MATERIAL NOTED		
DATE 7/13/2006	DATE 3/25/2013	DATE 6/10/2010	SHEET 1 OF 2		