

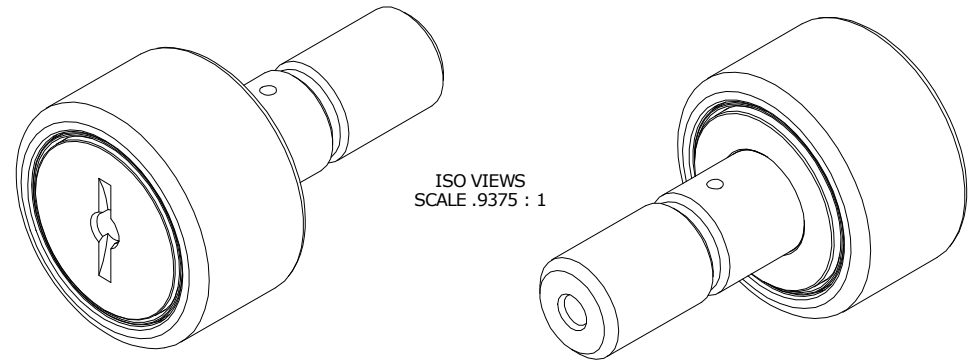
| LOAD RATINGS | | |
|-------------------------|-------|---------|
| RATING | lbf | Newtons |
| RADIAL BASIC DYNAMIC | 4,840 | 21,529 |
| MAXIMUM STATIC CAPACITY | 5,640 | 25,088 |

- NOTES:
1. BEARING IS PACKED WITH NLGI GRADE 2, LITHIUM BASED GREASE (UNLESS OTHERWISE SPECIFIED)
 2. ALL EXPOSED STEEL SURFACES HAVE BLACK OXIDE
 3. LIMITING SPEED:
 - A. GREASE = 2,500 RPM
 4. CUSTOM LASER ETCHING UPON REQUEST

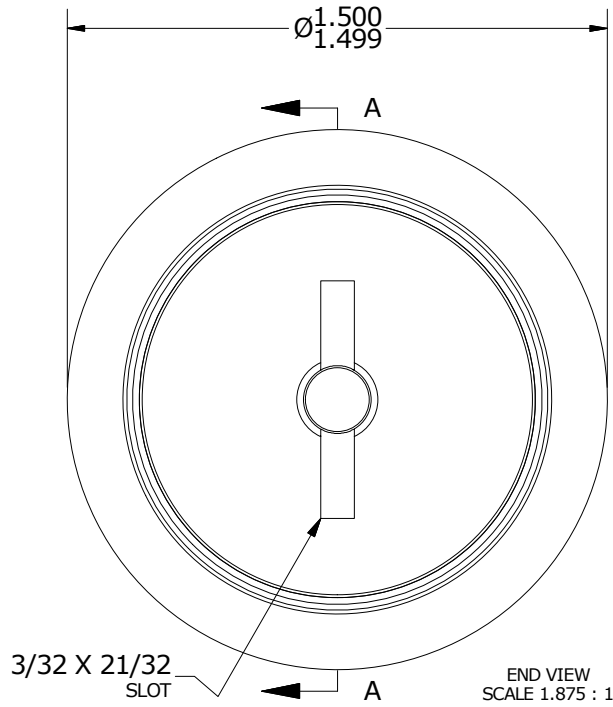
| | | | |
|--------|---------|-------------|----------|
| MS NO. | NSN NO. | DRAWING NO. | CNB-48-S |
|--------|---------|-------------|----------|

| RECOMMENDED MOUNTING HOLE Ø | | |
|-----------------------------|-------|--------|
| Limit | Inch | mm |
| MIN | .6250 | 15.875 |
| MAX | .6255 | 15.888 |

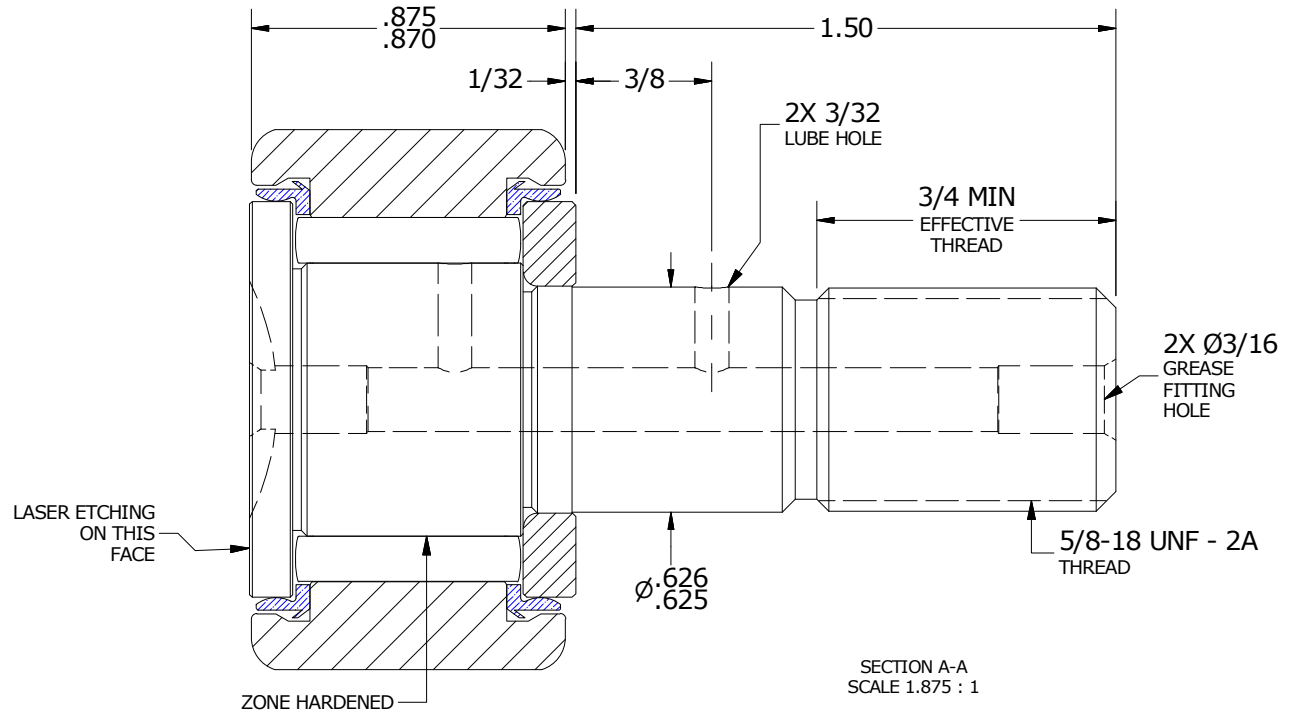
| MAXIMUM CLAMPING TORQUE | | |
|-------------------------|----------|------|
| Thread Type | Inch Lbs | Nm |
| DRY | 650 | 73 |
| LUBRICATED | 325 | 36.5 |



ISO VIEWS
SCALE .9375 : 1



END VIEW
SCALE 1.875 : 1



SECTION A-A
SCALE 1.875 : 1

MATERIAL NOTES:

- OUTER RING - BEARING STEEL, HEAT TREATED
- STUD - BEARING STEEL, ZONE HARDENED
- NEEDLE ROLLER(S) - BEARING STEEL, HEAT TREATED
- WASHER - BEARING STEEL, HEAT TREATED
- SEAL(S) - SYNTHETIC

CUSTOMER PART#

XX = ± .01
XXX = ± .005
XXXX = ± .0005
ANGLES = ± 1'
INCH [METRIC]
FRACTION = ± 1/32

CARTER MANUFACTURING IS NOT RESPONSIBLE FOR TYPOGRAPHICAL ERRORS

CARTER MANUFACTURING CO., INC.

GRAND HAVEN, MICHIGAN 49417

ENGINEERING CHANGE ORDER NOTE

REVISION

PART NAME: ASSEMBLY

PRODUCT TYPE: CNB

C

AUTHOR BY
DB

DRAWN BY
GJP

CHK'D BY
SGW

SALES
KR

MATERIAL
NOTED

REVISION BY
SGW

DATE
3/6/2013

DATE
11/18/1999

DATE
3/6/2013

DATE
6/14/2010

SHEET
1 OF 2