

LOAD RATINGS		
RATING	lbf	Newtons
RADIAL BASIC DYNAMIC	3,530	15,702
MAXIMUM STATIC CAPACITY	2,300	10,231

RECOMMENDED MOUNTING HOLE Ø		
Limit	Inch	mm
MIN	.5000	12.7072
MAX	.5005	12.7085

MAXIMUM CLAMPING TORQUE**		
Thread Type	Inch Lbs	Nm
LUBRICATED	175	20

NOTES:

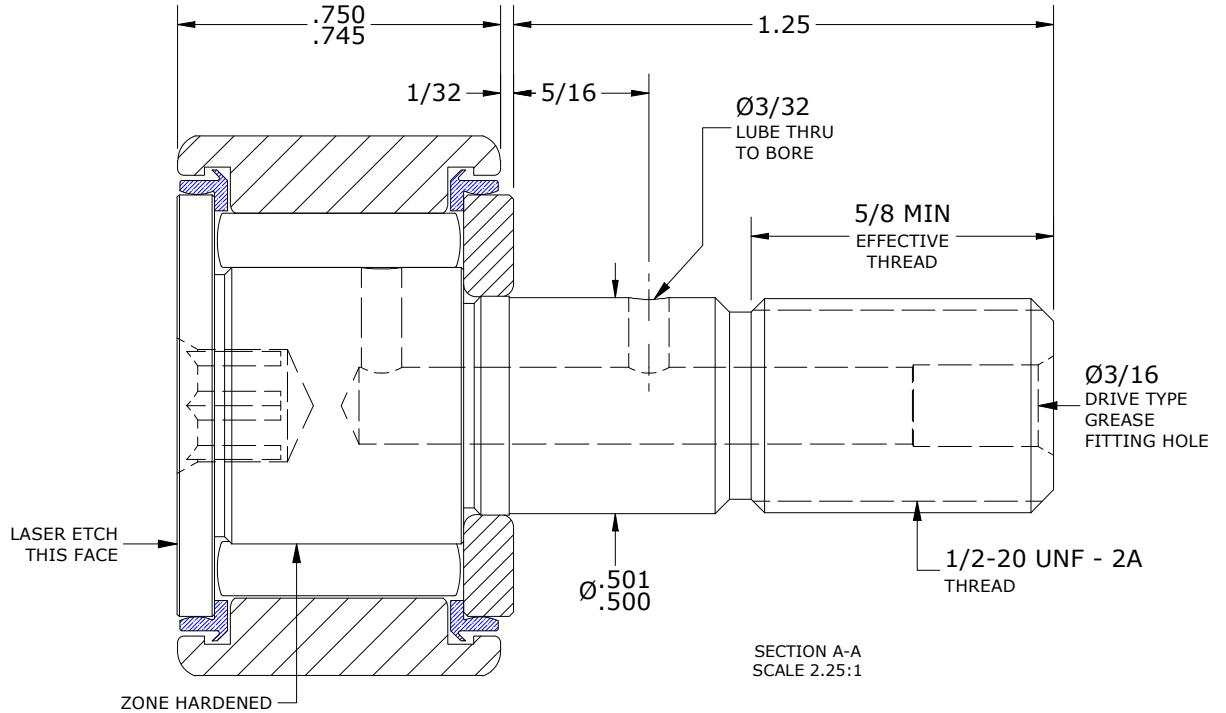
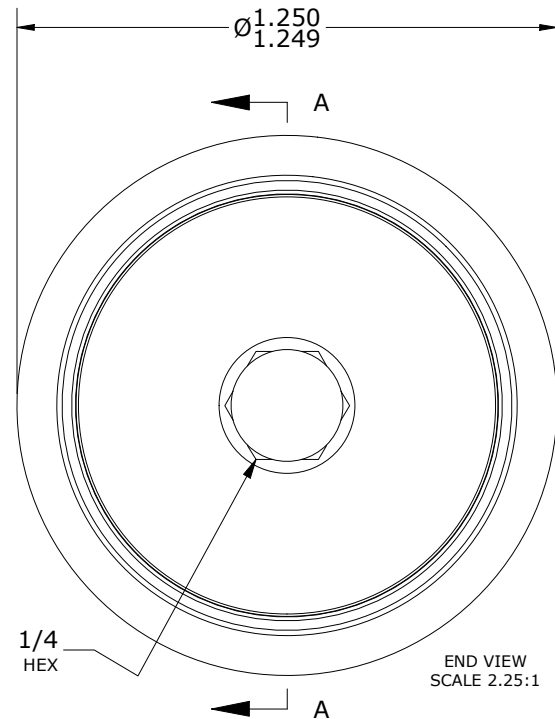
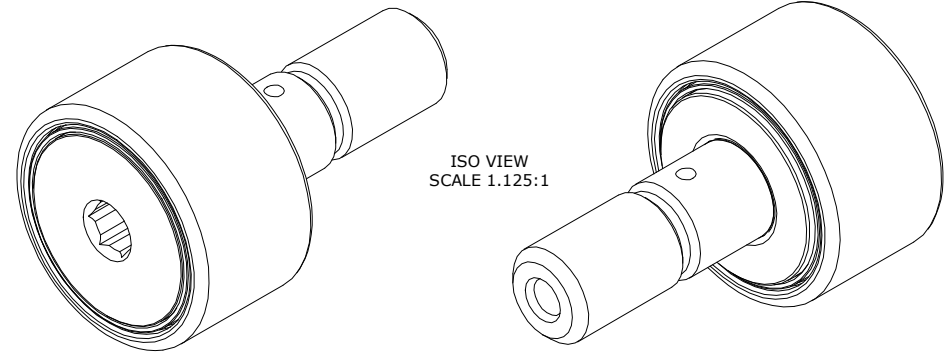
1. BEARING IS PACKED WITH NLGI 2, FOOD GRADE, H1 GREASE (UNLESS OTHERWISE SPECIFIED).
2. ALL EXPOSED SURFACES, AS MOUNTED, HAVE CHROME PLATE.
3. CUSTOM LASER ETCHING IS AVAILABLE UPON REQUEST
4. LIMITING SPEED:
  - A. GREASE = 3,100 RPM.

MS NO.

NSN NO.

DRAWING NO.

CNB-40-SBC



\*\*TORQUE SPECIFICATION IS BASED ON LUBRICATED THREADS, IF USING DRY THREADS DOUBLE TORQUE VALUE

MATERIAL NOTES:

- OUTER RING - BEARING STEEL, HEAT TREATED
- STUD - BEARING STEEL, ZONE HARDENED
- NEEDLE ROLLER(S) - 440C STAINLESS STEEL, HEAT TREATED
- WASHER - BEARING STEEL, HEAT TREATED
- SEAL(S) - SYNTHETIC

CUSTOMER PART#

XX = ± .01  
 XXX = ± .005  
 XXXX = ± .0005  
 ANGLES = ± 1'  
 INCH [METRIC]  
 FRACTION = ± 1/32

CARTER MANUFACTURING IS NOT RESPONSIBLE FOR TYPOGRAPHICAL ERRORS

**CARTER MANUFACTURING CO., INC.**

GRAND HAVEN, MICHIGAN 49417

ENGINEERING CHANGE ORDER NOTE

REVISION

PART NAME: ASSEMBLY

PRODUCT TYPE: CNB, CHROME PLATED

C

AUTHOR BY

DRAWN BY

CHK'D BY

SALES

MATERIAL

HG

MD

MD

KR

NOTED

REVISION BY

DATE

DATE

DATE

DATE

SHEET

SGW

5/25/2016

12/2/2008

5/24/2016

5/31/2016

1 OF 2