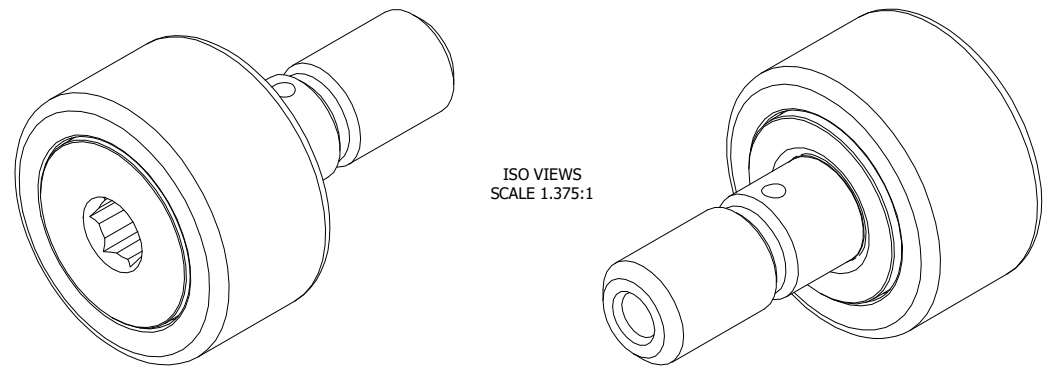
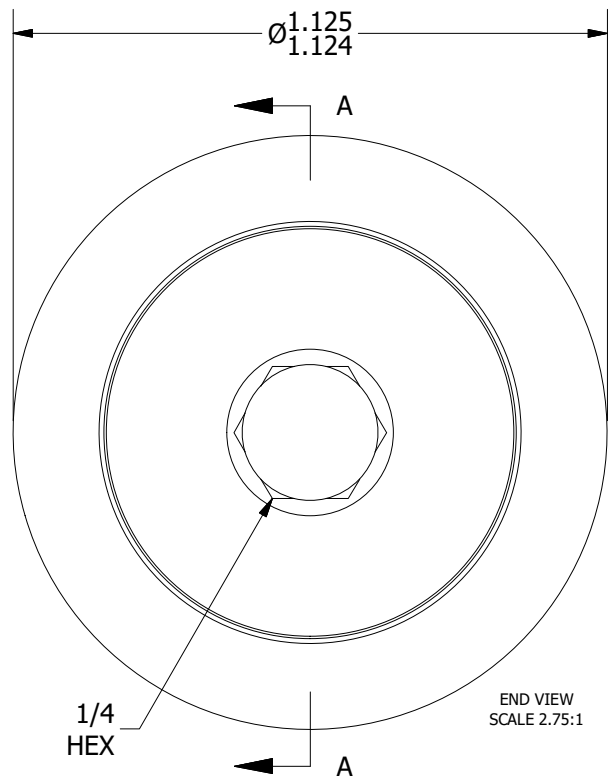


LOAD RATINGS	
RATING	Lbs
RADIAL BASIC DYNAMIC	2,225
MAXIMUM STATIC CAPACITY	3,060

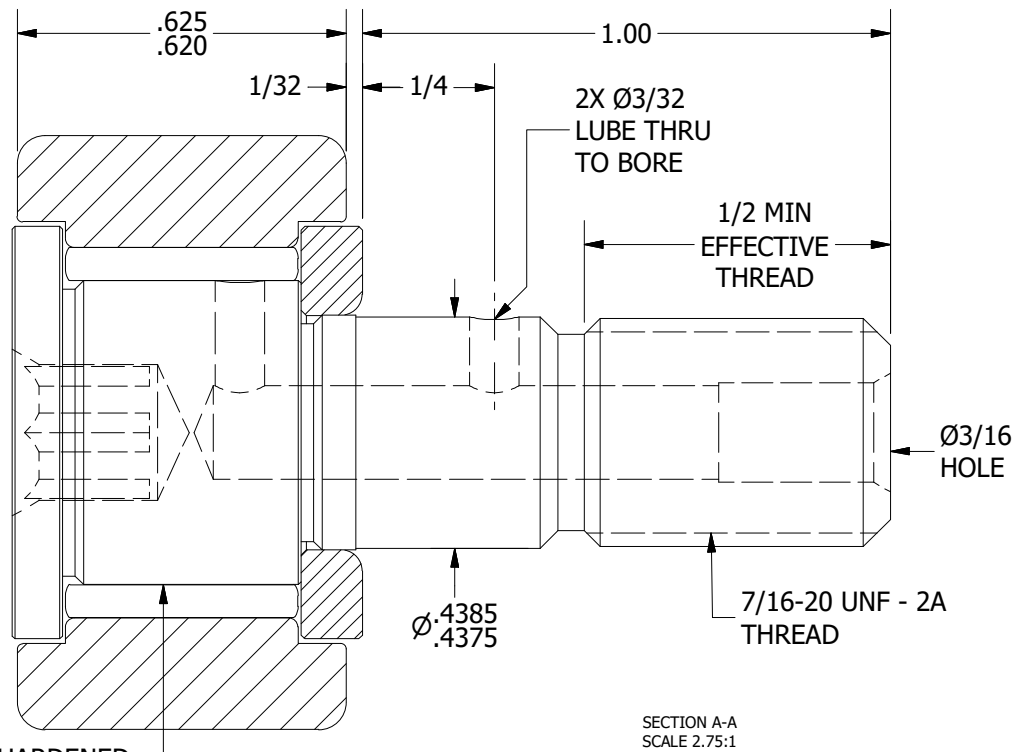
NOTES:
 1. BEARING IS PACKED WITH LITHIUM BASED #2 WEIGHT GREASE
 2. ALL EXPOSED SURFACES HAVE BLACK OXIDE



ISO VIEWS
 SCALE 1.375:1



END VIEW
 SCALE 2.75:1



SECTION A-A
 SCALE 2.75:1

MATERIAL NOTES:
 OUTER RACE - BEARING STEEL, HEAT TREATED
 STUD - BEARING STEEL, ZONE HARDENED
 NEEDLE ROLLER - BEARING STEEL, HEAT TREATED
 WASHER - COLD ROLLED STEEL, HEAT TREATED

CUSTOMER PART#	.XX = ± .01 .XXX = ± .005 .XXXX = ± .0005 ANGLES = ± 1' INCH [METRIC] FRACTION = ± 1/32
CHANGE NOTE:	

CARTER MANUFACTURING IS NOT RESPONSIBLE FOR TYPOGRAPHICAL ERRORS	
REVISION	
B	AUTHOR. BY
DB	EMD
REV. BY	DATE
SGW	4/24/2013

CARTER MANUFACTURING CO., INC.				
GRAND HAVEN, MICHIGAN 49417				
PART NAME: ASSEMBLY			SHEET 1 OF 2	
SALES	MATERIAL	CHK'D BY	DATE	DATE
KR	NOTED	MD	4/24/2013	4/24/2013
DATE	DRAWING NO.	DATE	DATE	DATE
4/24/2013	CNB-36-B	6/26/2006	4/24/2013	4/24/2013