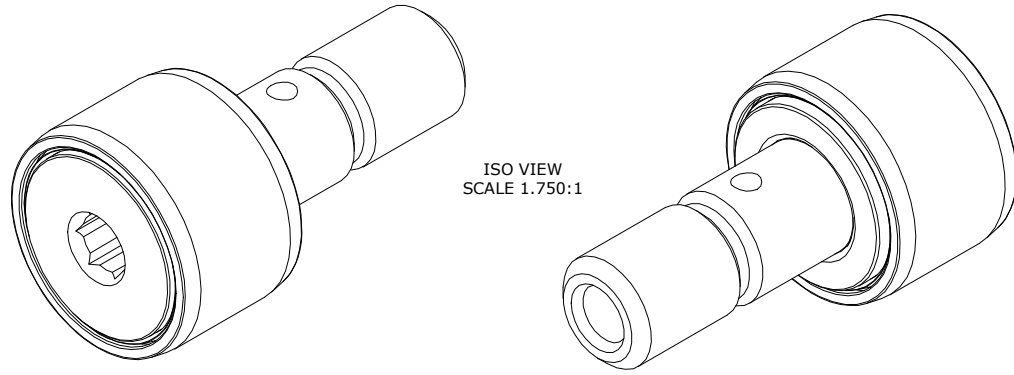


LOAD RATINGS		
RATING	Lbs	Newtons
RADIAL BASIC DYNAMIC	1,490	6,628
MAXIMUM STATIC CAPACITY	1,500	6,672

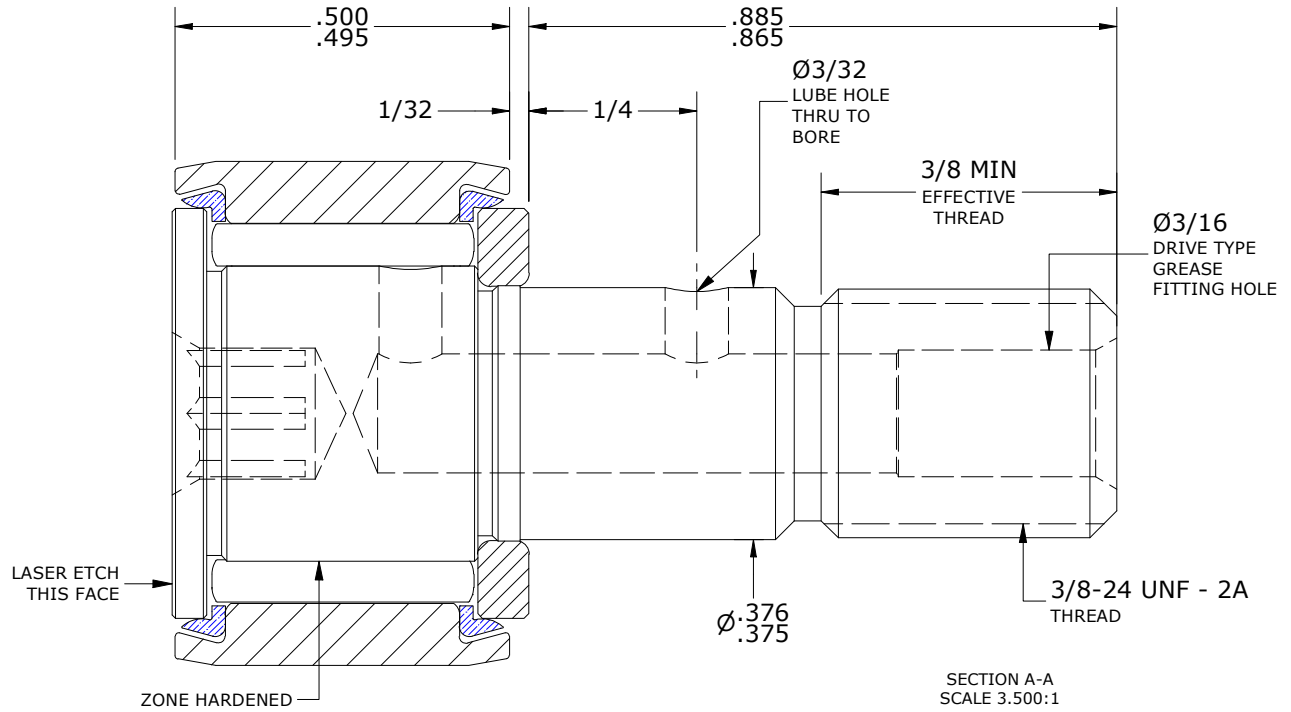
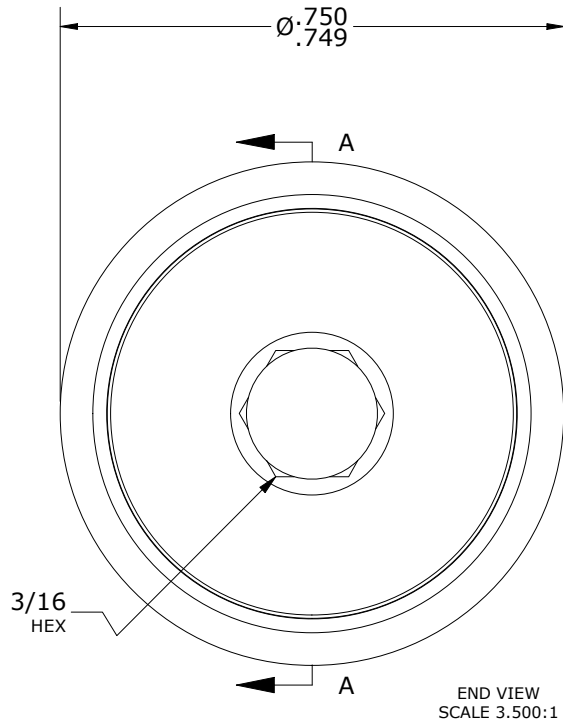
MS NO. \_\_\_\_\_ NSN NO. \_\_\_\_\_ DRAWING NO. CNB-24-SBC

RECOMMENDED MOUNTING HOLE Ø		
Limit	Inch	mm
MIN	.3750	9.5250
MAX	.3755	9.5377

- NOTES:
- BEARING IS PACKED WITH NLGI GRADE 2, H1, FOOD GRADE GREASE (UNLESS OTHERWISE SPECIFIED)
  - ALL EXPOSED STEEL SURFACES HAVE CHROME PLATE
  - LIMITING SPEED:
    - A. GREASE = 6,400 RPM



MAXIMUM CLAMPING TORQUE**		
Thread Type	Inch Lbs	Nm
LUBRICATED	47.5	5.5



\*\*TORQUE SPECIFICATION IS BASED ON LUBRICATED THREADS, IF USING DRY THREADS DOUBLE TORQUE VALUE

MATERIAL NOTES:

OUTER RING - BEARING STEEL, HEAT TREATED  
 STUD - BEARING STEEL, ZONE HARDENED  
 NEEDLE ROLLER(S) - 440C STAINLESS STEEL, HEAT TREATED  
 WASHER - BEARING STEEL, HEAT TREATED  
 SEAL(S) - SYNTHETIC

CUSTOMER PART#	XX = ± .01 XXX = ± .005 XXXX = ± .0005 ANGLES = ± 1' INCH [METRIC] FRACTION = ± 1/32
<i>ENGINEERING CHANGE ORDER NOTE</i>	

CARTER MANUFACTURING IS NOT RESPONSIBLE FOR TYPOGRAPHICAL ERRORS						<b>CARTER MANUFACTURING CO., INC.</b> GRAND HAVEN, MICHIGAN 49417					
REVISION			PART NAME: ASSEMBLY			PRODUCT TYPE: CNB, CHROME PLATE					
B	AUTHOR BY	DRAWN BY	CHK'D BY	SALES	MATERIAL						
REVISION BY	DATE	DATE	DATE	DATE	SHEET						
SGW	HG	SGW	MD	KR	NOTED						
	4/24/2017	12/2/2008	4/24/2017	4/24/2017	1 OF 2						