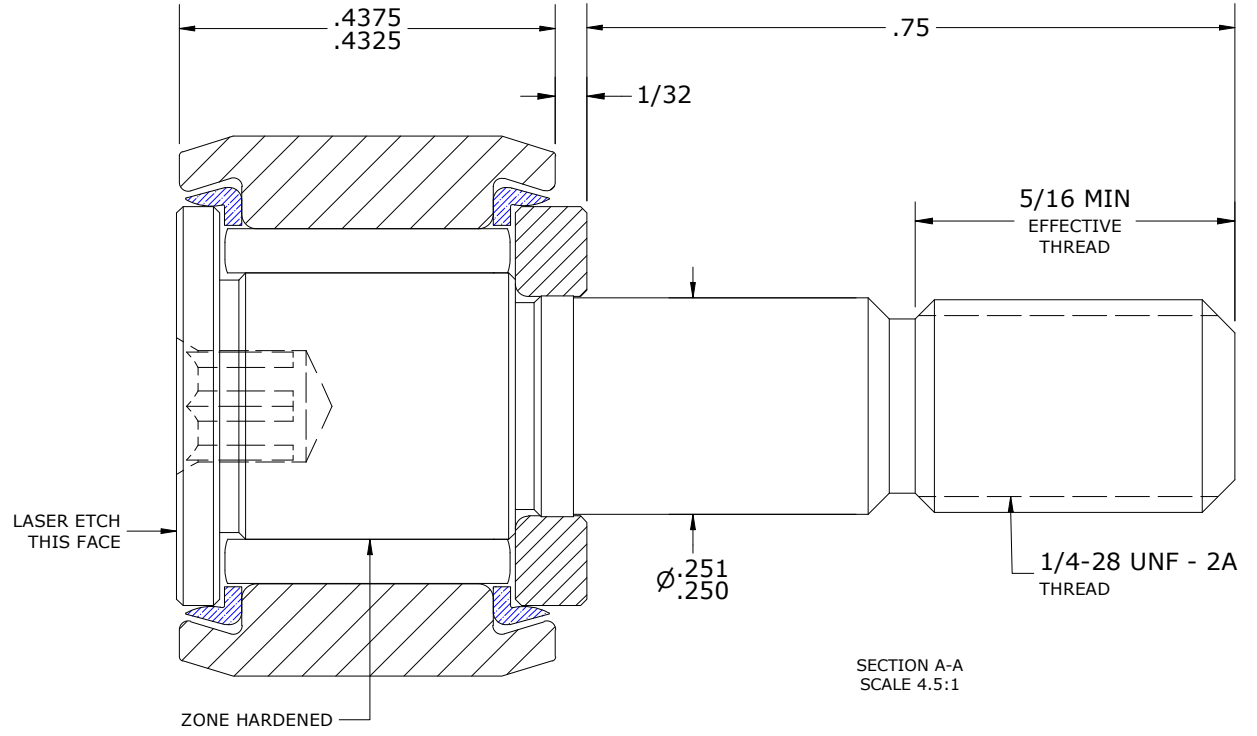
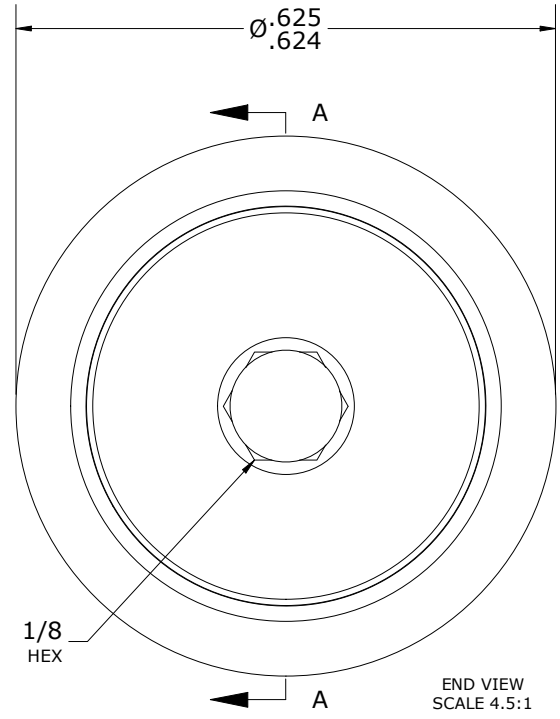
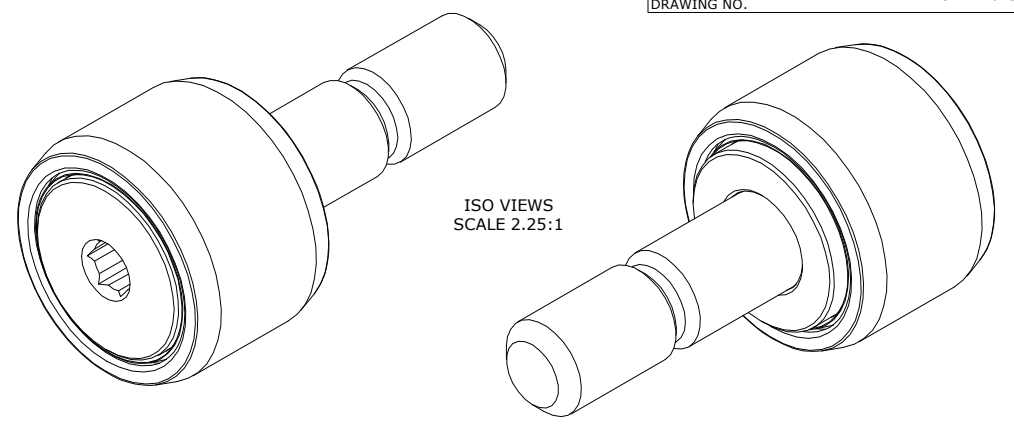


LOAD RATINGS		
RATING	lbf	Newtons
RADIAL BASIC DYNAMIC	955	4,248
MAXIMUM STATIC CAPACITY	1,215	5,405

- NOTES:
- BEARING IS PACKED WITH NLGI GRADE 2, LITHIUM BASED GREASE (UNLESS OTHERWISE SPECIFIED).
  - ALL EXPOSED SURFACES HAVE BLACK OXIDE.
  - LIMITING SPEED:
    - GREASE = 9,200 RPM.
  - CUSTOM LASER ETCHING AVAILABLE UPON REQUEST.

RECOMMENDED MOUNTING HOLE Ø		
Limit	Inch	mm
MIN	.2500	6.3500
MAX	.2505	6.3627

MAXIMUM CLAMPING TORQUE**		
Thread Type	Inch lbf	Nm
LUBRICATED	17.5	1.98



\*\*TORQUE SPECIFICATION IS BASED ON LUBRICATED THREADS, IF USING DRY THREADS DOUBLE TORQUE VALUE

**MATERIAL NOTES:**

OUTER RING - BEARING STEEL, HEAT TREATED

STUD - BEARING STEEL, ZONE HARDENED

NEEDLE ROLLER(S) - BEARING STEEL, HEAT TREATED

WASHER - BEARING STEEL, HEAT TREATED

SEAL(S) - SYNTHETIC

<i>CUSTOMER PART#</i>	XX = ± .01 XXX = ± .005 XXXX = ± .0005 ANGLES = ± 2' INCH [METRIC] FRACTION = ± 1/64
<i>ENGINEERING CHANGE ORDER NOTE</i>	
CARTER STANDARD SURFACE FINISH IS MEASURED IN "Ra" UNITS UNLESS OTHERWISE SPECIFIED.	

CARTER MANUFACTURING IS NOT RESPONSIBLE FOR TYPOGRAPHICAL ERRORS		<b>CARTER MANUFACTURING CO., INC.</b> GRAND HAVEN, MICHIGAN 49417			
<i>REVISION</i>		PART NAME: ASSEMBLY			PRODUCT TYPE: Standard CF/YR
<b>C</b>	AUTHOR BY HG	DRAWN BY GJP	CHK'D BY MD	SALES KR	MATERIAL NOTED
REVISION BY DJB	DATE 3/1/2024	DATE 12/14/1999	DATE 3/1/2024	DATE 5/11/2014	SHEET 1 OF 2