

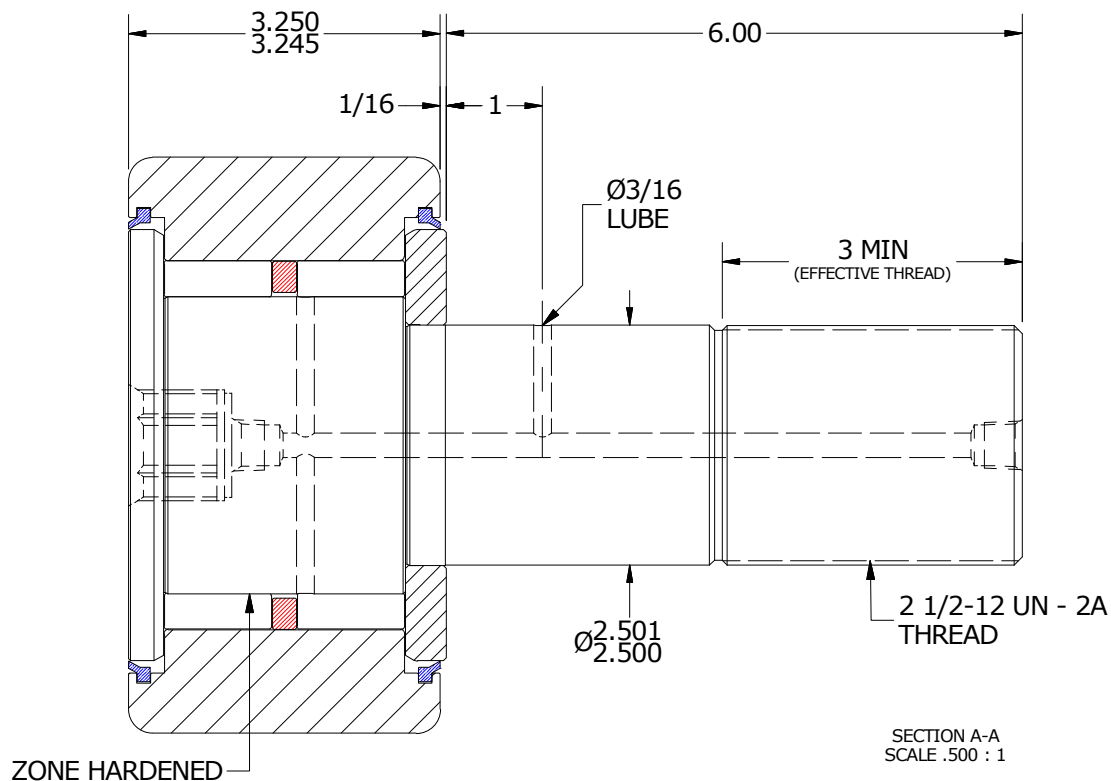
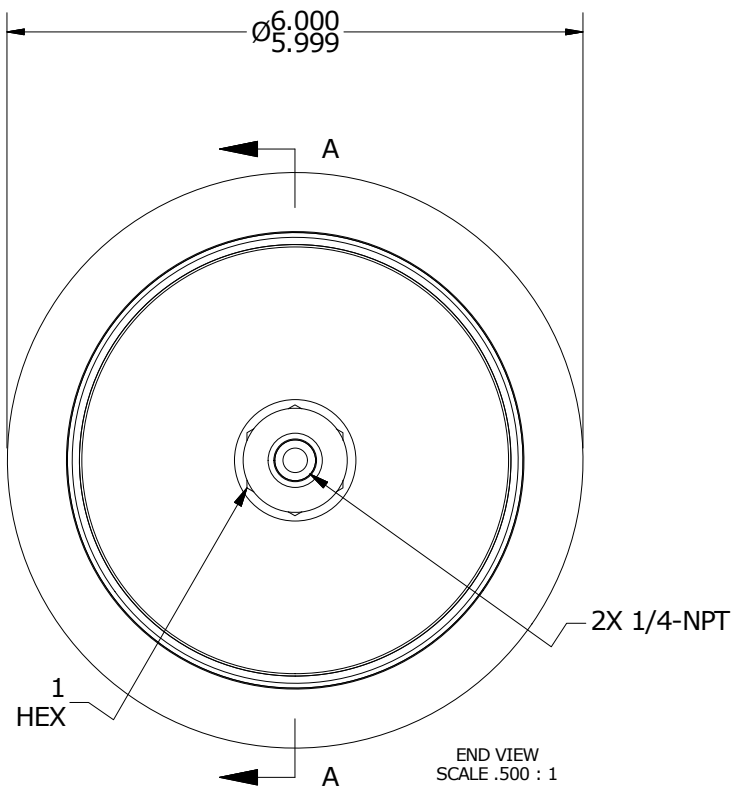
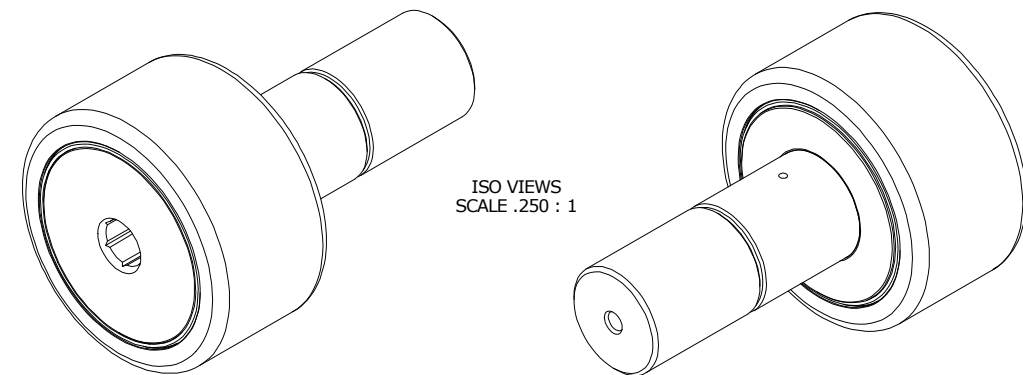
LOAD RATINGS		
RATING	lbf	Newtons
RADIAL BASIC DYNAMIC	60,000	266,893
MAXIMUM STATIC CAPACITY	80,450	357,859

NOTES:

1. BEARING IS PACKED WITH NLGI GRADE 2, LITHIUM BASED GREASE (UNLESS OTHERWISE SPECIFIED)
2. ALL EXPOSED STEEL SURFACES HAVE BLACK OXIDE
3. LIMITING SPEED:  
A. GREASE = 475 RPM

RECOMMENDED MOUNTING HOLE Ø		
Limit	Inch	mm
MIN	2.5000	63.5000
MAX	2.5005	63.5076

MAXIMUM CLAMPING TORQUE		
Thread Type	Inch Lbs	Nm
DRY	5,000	565
LUBRICATED	2,500	282.5



MATERIAL NOTES:

- OUTER RING - BEARING STEEL, HEAT TREATED
- STUD - BEARING STEEL, ZONE HARDENED
- NEEDLE ROLLER(S) - BEARING STEEL, HEAT TREATED
- WASHER - BEARING STEEL, HEAT TREATED
- SPACER - BEARING STEEL, HEAT TREATED
- SEAL - SYNTHETIC

CUSTOMER PART#

XX = ± .01  
XXX = ± .005  
XXXX = ± .0005  
ANGLES = ± 1'  
INCH [METRIC]  
FRACTION = ± 1/32

CARTER MANUFACTURING IS NOT RESPONSIBLE FOR TYPOGRAPHICAL ERRORS

**CARTER MANUFACTURING CO., INC.**

GRAND HAVEN, MICHIGAN 49417

ENGINEERING CHANGE ORDER NOTE

REVISION

PART NAME: ASSEMBLY

PRODUCT TYPE: CNB

**B**

AUTHOR BY  
HG

DRAWN BY  
GJP

CHK'D BY  
MD

SALES  
KR

MATERIAL  
NOTED

REVISION BY  
SGW

DATE  
8/8/2018

DATE  
8/18/2000

DATE  
8/8/2018

DATE  
8/8/2018

SHEET  
1 OF 2