

LOAD RATINGS		
RATING	lbf	Newtons
RADIAL BASIC DYNAMIC	610	2,713
MAXIMUM STATIC CAPACITY	300	1,334

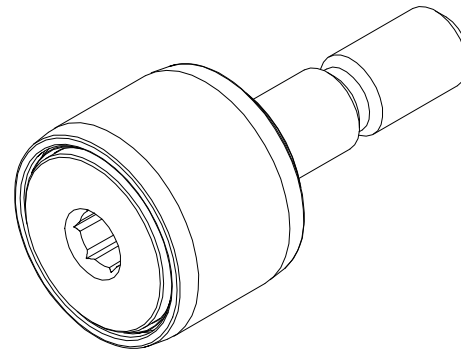
RECOMMENDED MOUNTING HOLE Ø		
Limit	Inch	mm
MIN	.1900	4.8260
MAX	.1905	4.8387

MAXIMUM CLAMPING TORQUE**		
Thread Type	Inch Lbs	Nm
LUBRICATED	7.5	.85

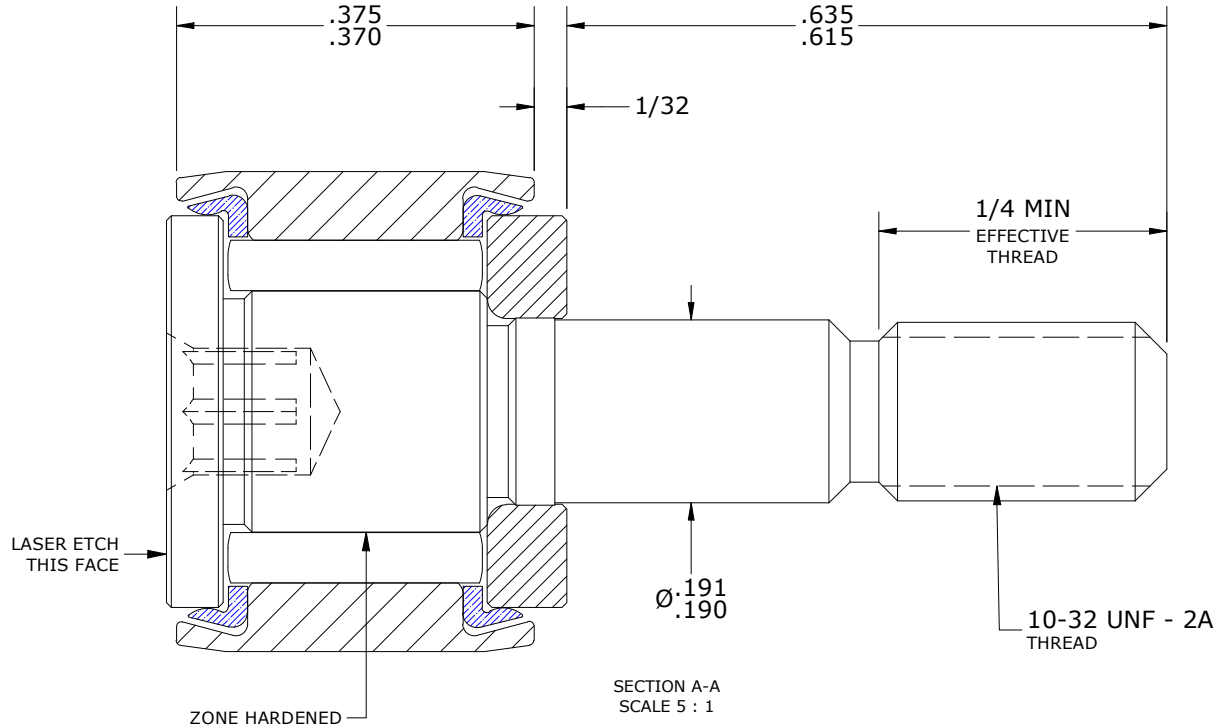
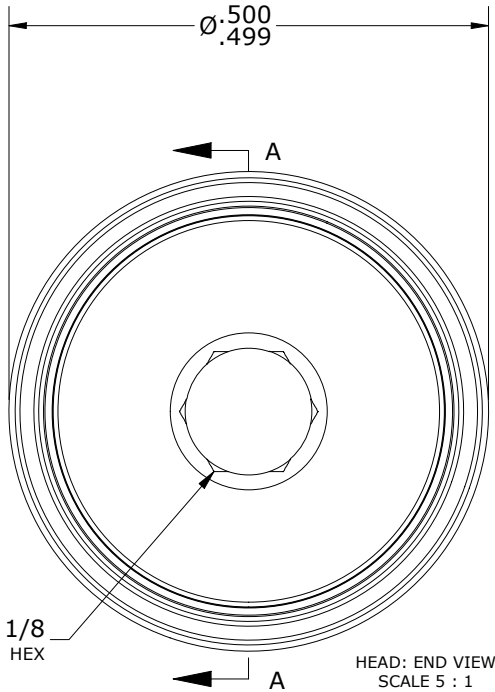
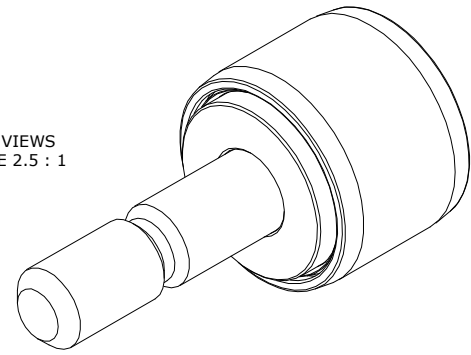
NOTES:

1. BEARING IS PACKED WITH NLGI 2, FOOD GRADE, H1 GREASE (UNLESS OTHERWISE SPECIFIED).
2. ALL EXPOSED SURFACES, AS MOUNTED, HAVE CHROME PLATE.
3. CUSTOM LASER ETCHING IS AVAILABLE UPON REQUEST
4. LIMITING SPEED:
  - A. GREASE = 11,500 RPM.

MS NO.	NSN NO.	DRAWING NO.	CNB-16-SBC
--------	---------	-------------	------------



ISO VIEWS  
SCALE 2.5 : 1



\*\*TORQUE SPECIFICATION IS BASED ON LUBRICATED THREADS, IF USING DRY THREADS DOUBLE TORQUE VALUE

MATERIAL NOTES:

OUTER RING - BEARING STEEL, HEAT TREATED  
 STUD - BEARING STEEL, ZONE HARDENED  
 NEEDLE ROLLER(S) - 440C STAINLESS STEEL, HEAT TREATED  
 WASHER - BEARING STEEL, HEAT TREATED  
 SEAL(S) - SYNTHETIC

CUSTOMER PART#	XX = ± .01 XXX = ± .005 XXXX = ± .0005 ANGLES = ± 1' INCH [METRIC] FRACTION = ± 1/32
----------------	---

CARTER MANUFACTURING IS NOT RESPONSIBLE FOR TYPOGRAPHICAL ERRORS

**CARTER MANUFACTURING CO., INC.**  
 GRAND HAVEN, MICHIGAN 49417

ENGINEERING CHANGE ORDER NOTE

REVISION		PART NAME: ASSEMBLY			PRODUCT TYPE: CNB, CHROME PLATED	
<b>B</b>	AUTHOR BY DB	DRAWN BY SGW	CHK'D BY SGW	SALES KR	MATERIAL NOTED	
REVISION BY MD	DATE 8/1/2011	DATE 12/2/2008	DATE 8/1/2011	DATE 7/31/2011	SHEET 1 OF 2	