

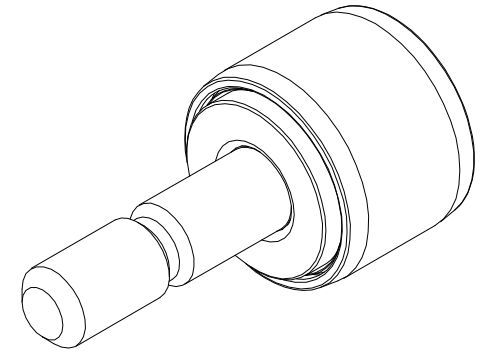
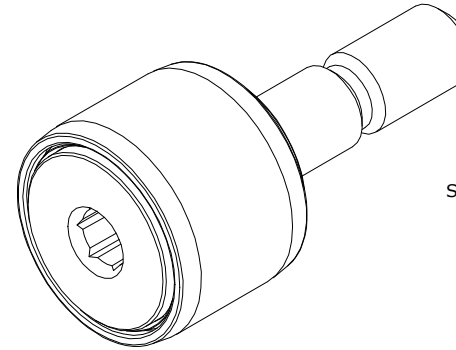
LOAD RATINGS		
RATING	lbf	Newtons
RADIAL BASIC DYNAMIC	680	3,025
MAXIMUM STATIC CAPACITY	790	3,514

NOTES:

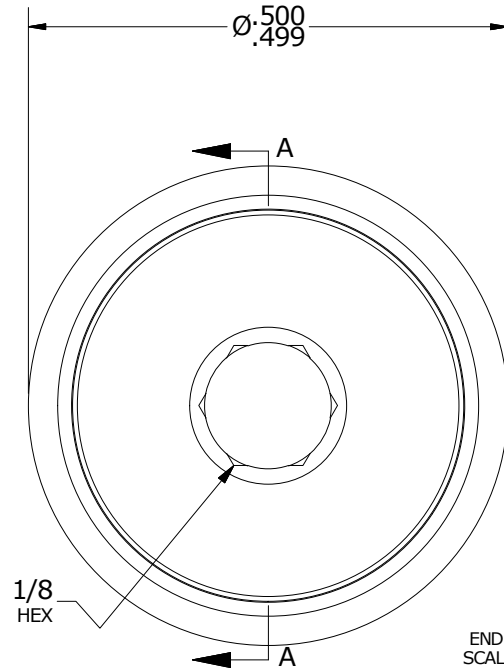
1. BEARING IS PACKED WITH NLGI GRADE 2, LITHIUM BASED GREASE (UNLESS OTHERWISE SPECIFIED)
2. ALL EXPOSED STEEL SURFACES HAVE BLACK OXIDE
3. CUSTOM LASER ETCHING UPON REQUEST
4. LIMITING SPEED:
  - A. GREASE = 11,500 RPM

RECOMMENDED MOUNTING HOLE Ø		
Limit	Inch	mm
MIN	.1900	4.8260
MAX	.1905	4.8387

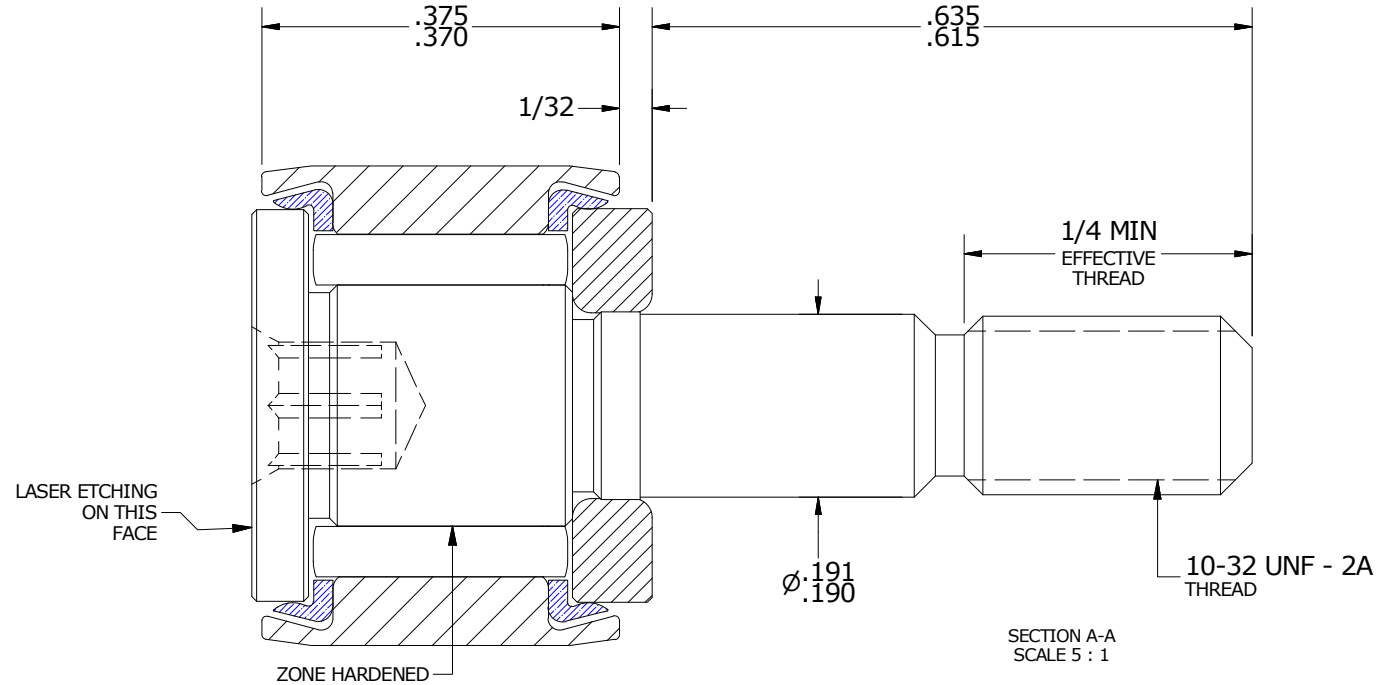
MAXIMUM CLAMPING TORQUE		
Thread Type	Inch Lbs	Nm
DRY	15	1.69
LUBRICATED	7.5	.85



ISO VIEWS  
SCALE 2.500 : 1



END VIEW  
SCALE 5 : 1



SECTION A-A  
SCALE 5 : 1

MATERIAL NOTES:

- OUTER RING - BEARING STEEL, HEAT TREATED
- STUD - BEARING STEEL, ZONE HARDENED
- NEEDLE ROLLER(S) - BEARING STEEL, HEAT TREATED
- WASHER - BEARING STEEL, HEAT TREATED
- SEAL(S) - SYNTHETIC

CUSTOMER PART#

XX = ± .01  
XXX = ± .005  
XXXX = ± .0005  
ANGLES = ± 1'  
INCH [METRIC]  
FRACTION = ± 1/32

CARTER MANUFACTURING IS NOT RESPONSIBLE FOR TYPOGRAPHICAL ERRORS

**CARTER MANUFACTURING CO., INC.**

GRAND HAVEN, MICHIGAN 49417

ENGINEERING CHANGE ORDER NOTE

REVISION

PART NAME: ASSEMBLY

PRODUCT TYPE: CNB

G

AUTHOR BY  
DB

DRAWN BY  
KPR

CHK'D BY  
MD

SALES  
KR

MATERIAL  
NOTED

REVISION BY  
SGW  
DATE  
1/28/2011

DATE  
8/25/1994

DATE  
1/28/2011

DATE  
1/27/2011

SHEET  
1 OF 2