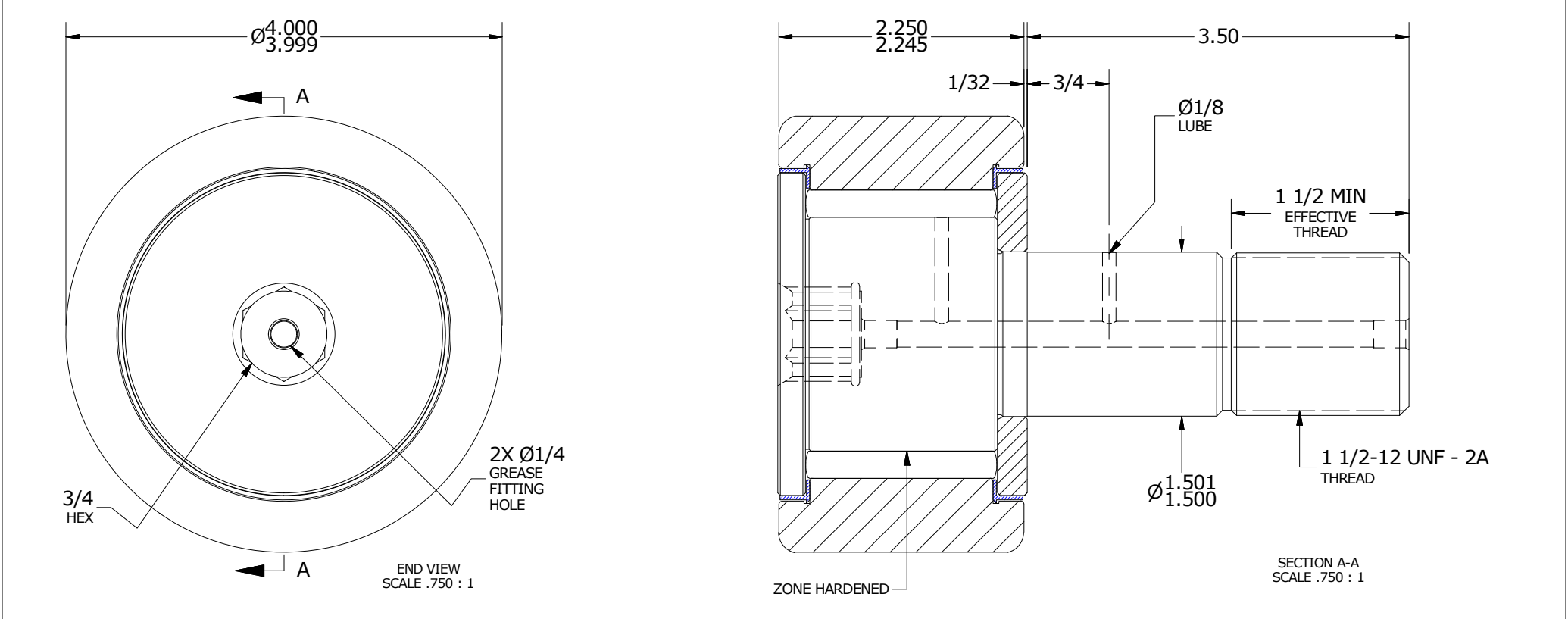
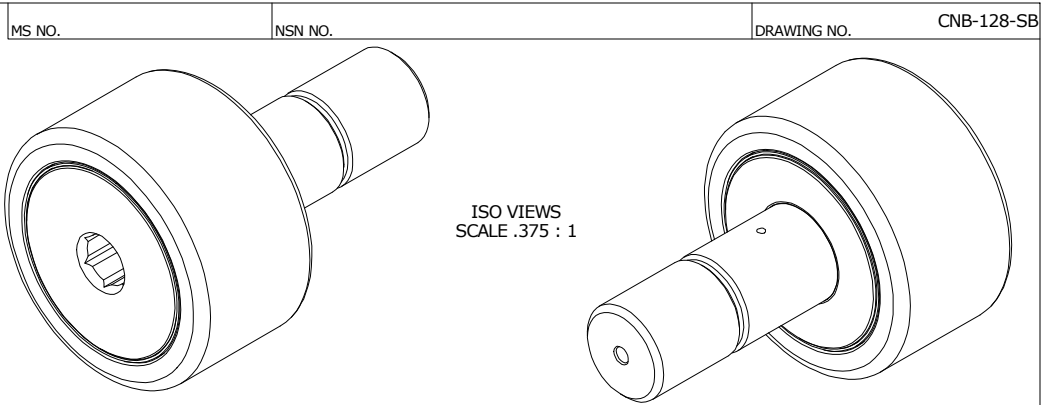


LOAD RATINGS		
RATING	Lbs	Newtons
RADIAL BASIC DYNAMIC	22,800	101,419
MAXIMUM STATIC CAPACITY	44,770	199,147

RECOMMENDED MOUNTING HOLE Ø		
Limit	Inch	mm
MIN	1.5000	38.1000
MAX	1.5005	38.1127

MAXIMUM CLAMPING TORQUE		
Thread Type	Inch Lbs	Nm
DRY	5,000	565
LUBRICATED	2,500	282.5

NOTES:
 1. BEARING IS PACKED WITH NLGI GRADE 2, H1, FOOD GREASE (UNLESS OTHERWISE SPECIFIED)
 2. LIMITING SPEED:
 A. GREASE = 700 RPM



MATERIAL NOTES: OUTER RING - BEARING STEEL, HEAT TREATED STUD - BEARING STEEL, ZONE HARDENED NEEDLE ROLLER(S) - BEARING STEEL, HEAT TREATED WASHER - BEARING STEEL, HEAT TREATED SEAL(S) - SYNTHETIC	CUSTOMER PART#	XX = ± .01 XXX = ± .005 XXXX = ± .0005 ANGLES = ± 1° INCH [METRIC] FRACTION = ± 1/32	CARTER MANUFACTURING IS NOT RESPONSIBLE FOR TYPOGRAPHICAL ERRORS		CARTER MANUFACTURING CO., INC. GRAND HAVEN, MICHIGAN 49417			
	ENGINEERING CHANGE ORDER NOTE		REVISION		PART NAME: ASSEMBLY		PRODUCT TYPE: CNB	
			A	AUTHOR BY BMC	DRAWN BY GJP	CHK'D BY BMC	SALES KPR	MATERIAL NOTED
			REVISION BY GJP	DATE 10/5/2000	DATE 8/15/2000	DATE 10/5/2000	DATE 10/5/2000	SHEET 1 OF 2