

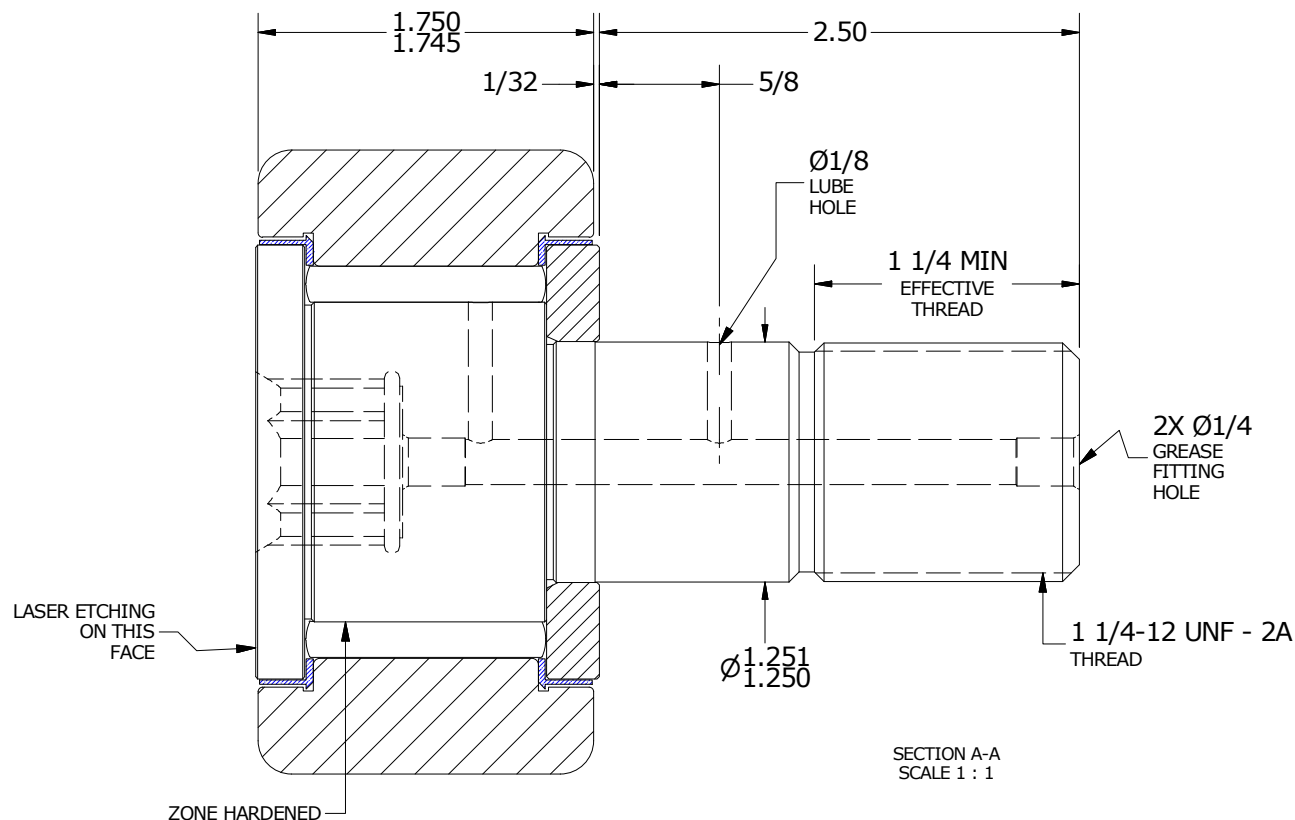
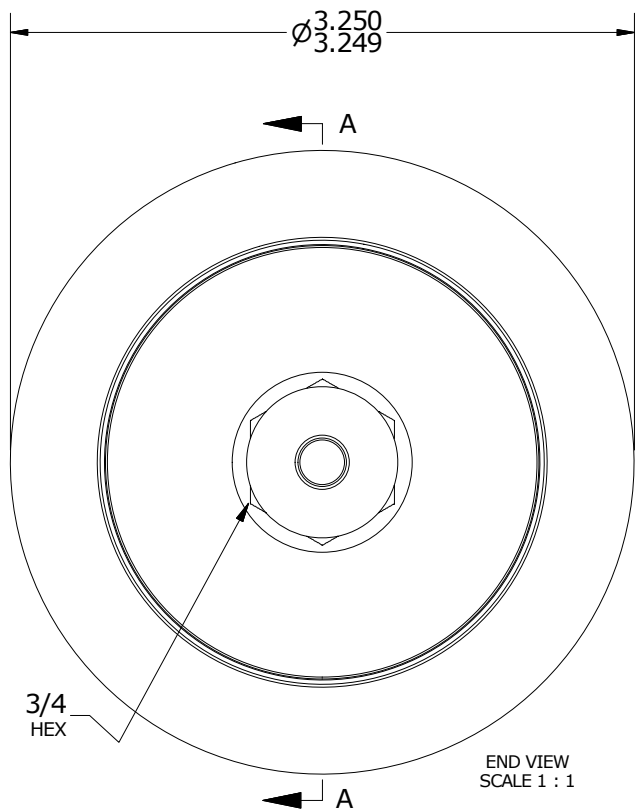
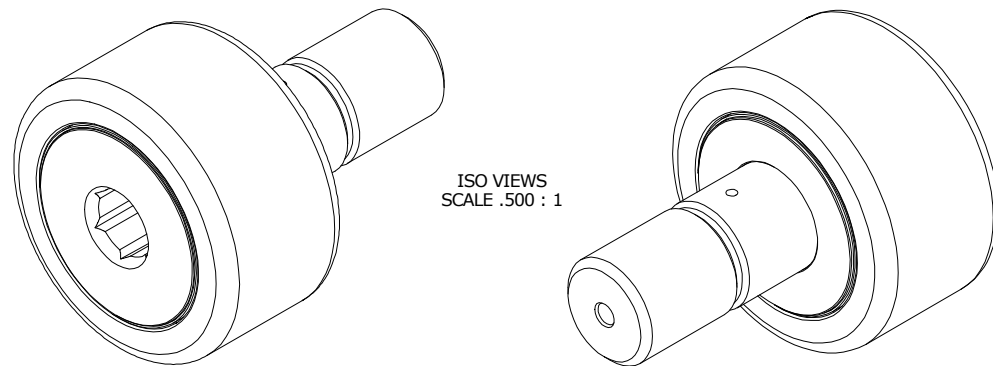
LOAD RATINGS		
RATING	lbf	Newtons
RADIAL BASIC DYNAMIC	15,720	69,926
MAXIMUM STATIC CAPACITY	24,910	110,805

NOTES:

1. BEARING IS PACKED WITH NLGI GRADE 2, LITHIUM BASED GREASE (UNLESS OTHERWISE SPECIFIED)
2. ALL EXPOSED STEEL SURFACES HAVE BLACK OXIDE
3. CUSTOM LASER ETCHING UPON REQUEST
4. LIMITING SPEED:
 - A. GREASE = 880 RPM

RECOMMENDED MOUNTING HOLE Ø		
Limit	Inch	mm
MIN	1.2500	31.7500
MAX	1.2505	31.7627

MAXIMUM CLAMPING TORQUE		
Thread Type	Inch lbf	Nm
DRY	3,450	390
LUBRICATED	1,725	195



MATERIAL NOTES:

OUTER RING - BEARING STEEL, HEAT TREATED
 STUD - BEARING STEEL, ZONE HARDENED
 NEEDLE ROLLER(S) - BEARING STEEL, HEAT TREATED
 WASHER - STEEL, HEAT TREATED
 SEAL(S) - SYNTHETIC

CUSTOMER PART#

XX = ± .01
 XXX = ± .005
 XXXX = ± .0005
 ANGLES = ± 1'
 INCH [METRIC]
 FRACTION = ± 1/32

CARTER MANUFACTURING IS NOT RESPONSIBLE FOR TYPOGRAPHICAL ERRORS

CARTER MANUFACTURING CO., INC.

GRAND HAVEN, MICHIGAN 49417

ENGINEERING CHANGE ORDER NOTE

REVISION

PART NAME: ASSEMBLY

PRODUCT TYPE: CNB

A

AUTHOR BY

DRAWN BY

CHK'D BY

SALES

MATERIAL

JGV

GJP

JGV

KPR

NOTED

REVISION BY

DATE

DATE

DATE

DATE

SHEET

JAF

7/10/2006

11/16/1999

7/10/2006

7/10/2006

1 OF 2