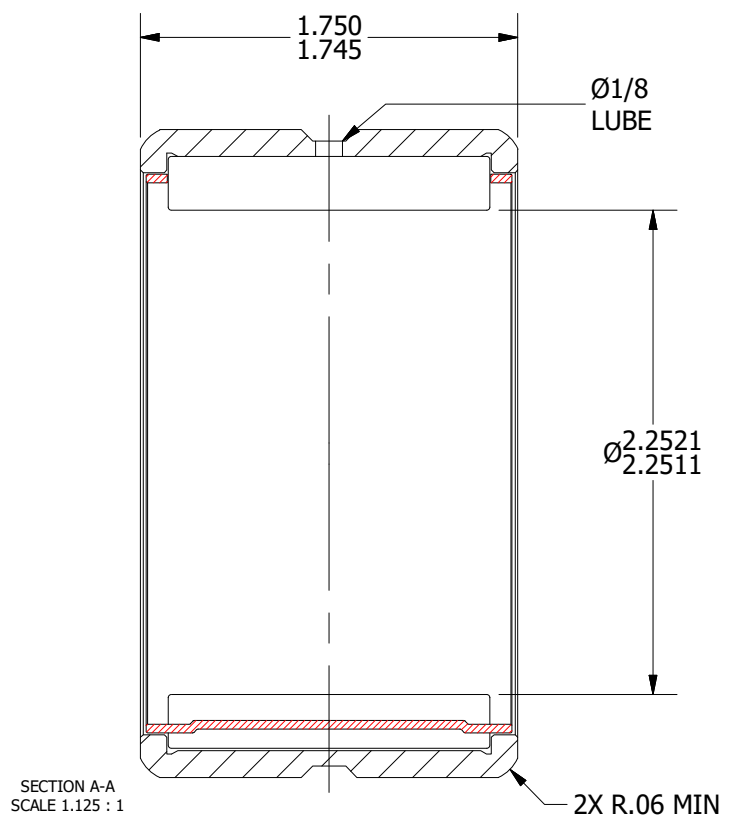
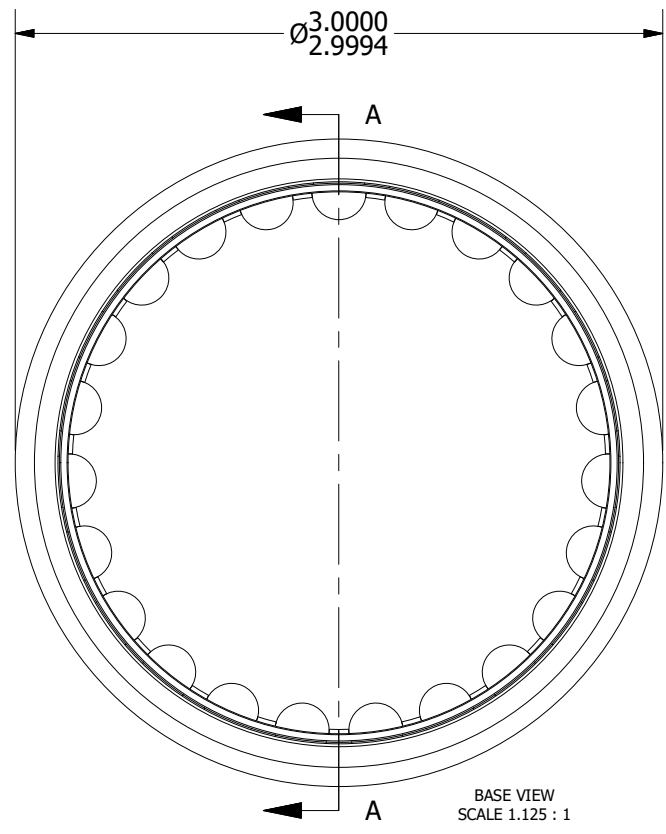
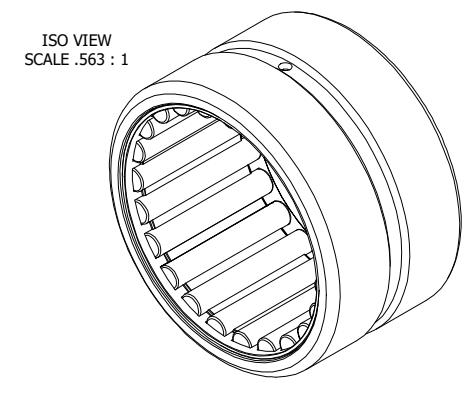


LOAD RATINGS	
RATING	Lbs
RADIAL BASIC DYNAMIC [C]	26,000
MAXIMUM STATIC CAPACITY [Co]	47,400

NOTES:
 1. BEARING IS LIGHTLY COATED WITH RUST/CORROSION INHIBITING OIL
 2. OUTER RACE HAS BLACK OXIDE ON ALL EXPOSED SURFACES

MS NO.	MS-51961-32	NSN NO.		DRAWING NO.	CMR-36
Recommended Housing Fits					
Fits	Housing Max Ø	Housing Min Ø			
Clearance	3.0007	3.0000			
Tight Transition	2.9996	2.9989			



MATERIAL NOTES:
 OUTER - BEARING STEEL, HEAT TREATED
 CAGE - COLD ROLLED STEEL
 ROLLER - BEARING STEEL, HEAT TREATED

CUSTOMER PART#	.XX = ± .01 .XXX = ± .005 .XXXX = ± .0005 ANGLES = ± 1' INCH [METRIC] FRACTION = ± 1/32
McGill#MR-36 Torrington#HJ-364828 RBC # SJ8407	
CHANGE NOTE:	

CARTER MANUFACTURING IS NOT RESPONSIBLE FOR TYPOGRAPHICAL ERRORS	
REVISION	
A	AUTHOR. BY
DB	SGW
REV. BY	DATE
SGW	5/3/2011

CARTER MANUFACTURING CO., INC.					
GRAND HAVEN, MICHIGAN 49417					
PART NAME: ASSEMBLY			SHEET 1 OF 2		
SALES	MATERIAL	CHK'D BY	DRAWN BY	AUTHOR. BY	REV. BY
KR	NOTED	MD	SGW	DB	SGW
DATE	DRAWING NO.	DATE	DATE	DATE	DATE
5/3/2011	CMR-36	5/3/2011	5/2/2011	5/3/2011	5/3/2011