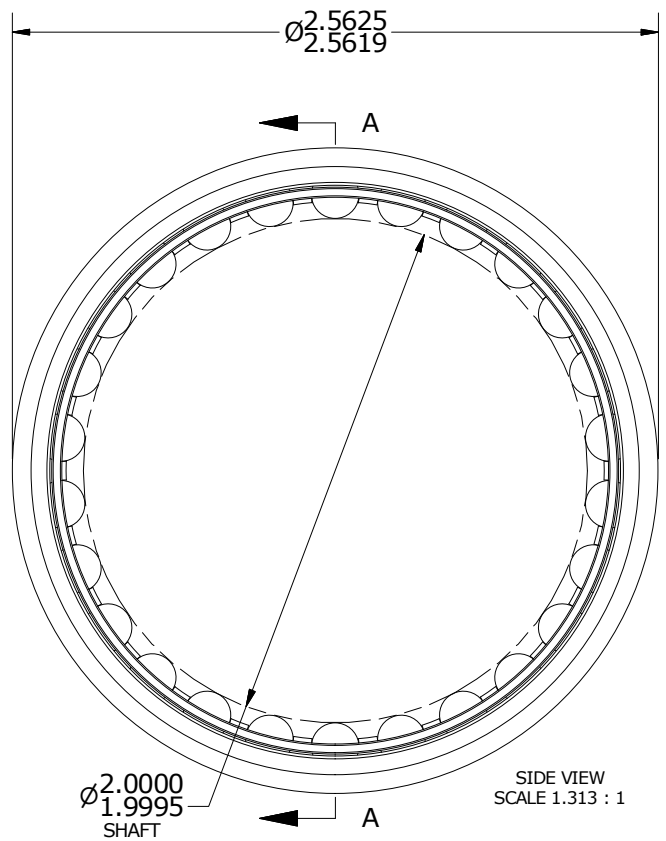
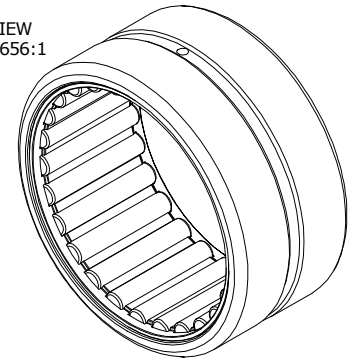


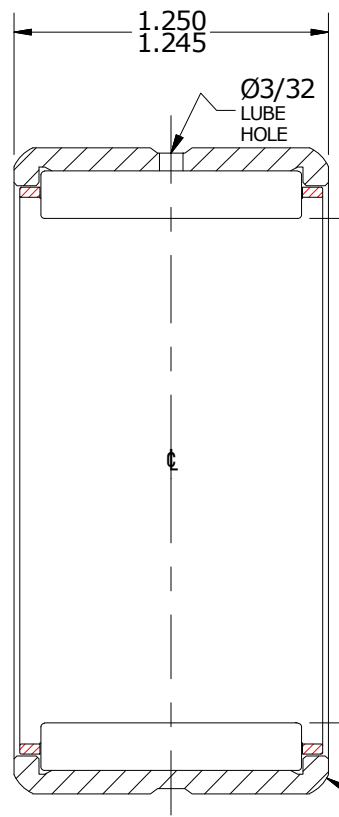
LOAD RATINGS	
RATING	Lbs
RADIAL BASIC DYNAMIC [C]	15,200
MAXIMUM STATIC CAPACITY [Co]	27,900

- NOTES:
 1. BEARING IS LIGHTLY COATED WITH RUST/CORROSION INHIBITING OIL
 2. OUTER RACE HAS BLACK OXIDE ON ALL EXPOSED SURFACES

ISO VIEW
SCALE .656:1



SIDE VIEW
SCALE 1.313 : 1



SECTION A-A
SCALE 1.313 : 1

Recommended Housing Fits		
Fits	Housing Max Ø	Housing Min Ø
Clearance	2.5632	2.5625
Tight Transition	2.5621	2.5614

MATERIAL NOTES:
 OUTER RING - BEARING STEEL, HEAT TREATED
 CAGE - STEEL
 NEEDLE ROLLER(S) - BEARING STEEL, HEAT TREATED

CUSTOMER PART#
 McGill#MR-32
 Torrington#HJ-324120
 RBC # SJ7355

XX = ± .01
 XXX = ± .005
 XXXX = ± .0005
 ANGLES = ± 1'
 INCH [METRIC]
 FRACTION = ± 1/32

CARTER MANUFACTURING IS NOT RESPONSIBLE FOR TYPOGRAPHICAL ERRORS

CARTER MANUFACTURING CO., INC.
 GRAND HAVEN, MICHIGAN 49417

ENGINEERING CHANGE ORDER NOTE

REVISION		PART NAME: ASSEMBLY			PRODUCT TYPE: CMR	
A	AUTHOR BY DB	DRAWN BY SGW	CHK'D BY MD	SALES KR	MATERIAL NOTED	
REVISION BY SGW	DATE 5/3/2011	DATE 4/29/2011	DATE 5/3/2011	DATE 4/28/2011	SHEET 1 OF 2	