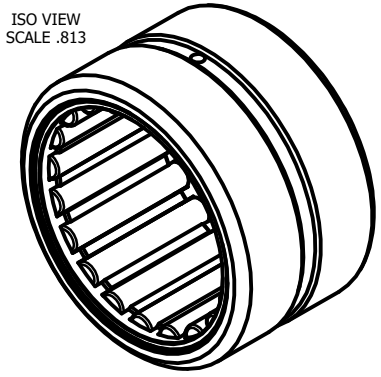
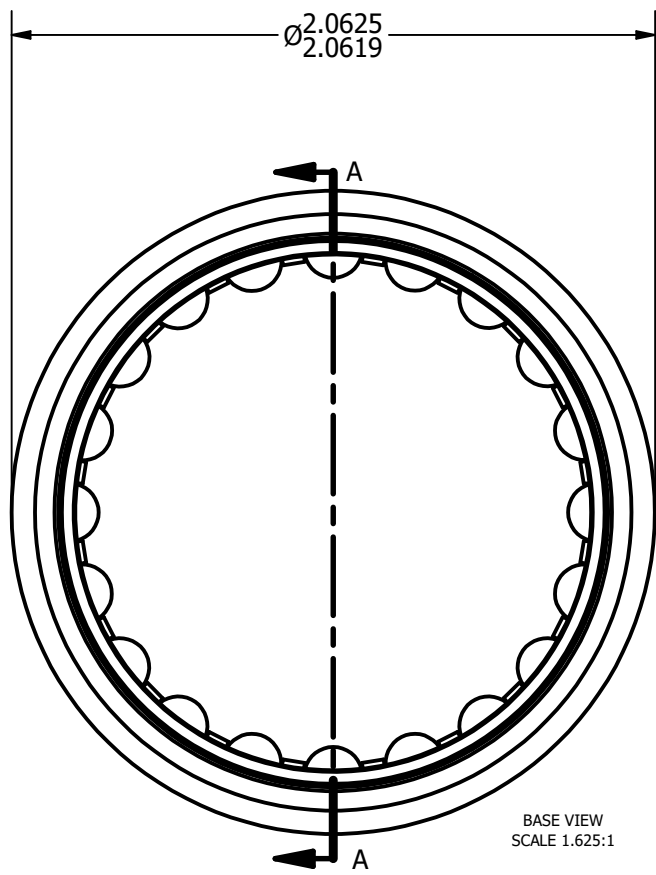


LOAD RATINGS	
RATING	Lbs
RADIAL BASIC DYNAMIC [C]	13,000
MAXIMUM STATIC CAPACITY [Co]	20,800

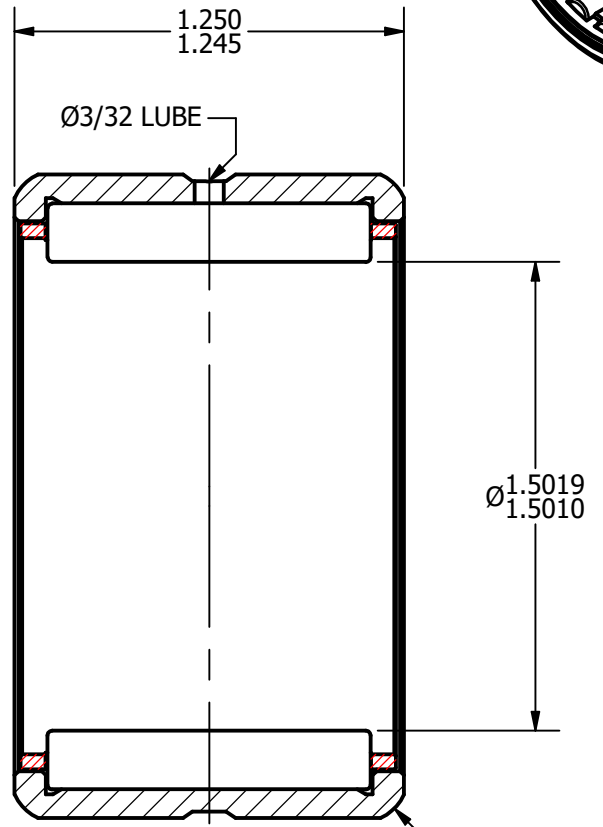
MS NO. MS-51961-22		DRAWING NO. CMR-24	
Recommended Housing Fits			
Fits	Housing Max Ø	Housing Min Ø	
Clearance	2.0632	2.0625	
Tight Transition	2.0621	2.0614	



NOTES:
 1. BEARING IS LIGHTLY COATED WITH RUST/CORROSION INHIBITING OIL
 2. OUTER RACE HAS BLACK OXIDE ON ALL EXPOSED SURFACES



BASE VIEW
SCALE 1.625:1



SECTION A-A
SCALE 1.625:1

MATERIAL NOTES:
 OUTER - BEARING STEEL, HEAT TREATED
 CAGE - COLD ROLLED STEEL
 ROLLER - BEARING STEEL, HEAT TREATED

CUSTOMER PART#
 McGill#MR-24
 Torrington#HJ-243320
 RBC#SJ7275

.XX = ± .01
 .XXX = ± .005
 .XXXX = ± .0005
 ANGLES = ± 1'
 INCH [METRIC]
 FRACTION = ± 1/32

CHANGE NOTE:

CARTER MANUFACTURING IS NOT RESPONSIBLE FOR TYPOGRAPHICAL ERRORS

REVISION	
C	AUTHOR. BY DB
REV. BY SGW	DATE 5/3/2011

CARTER MANUFACTURING CO., INC.
 GRAND HAVEN, MICHIGAN 49417

PART NAME: ASSEMBLY		SHEET 1 OF 2			
AUTHOR. BY	DRAWN BY	CHK'D BY	SALES	MATERIAL	
DB	SGW	MD	KR	NOTED	
REV. BY	DATE	DATE	DATE	DATE	DRAWING NO.
SGW	5/3/2011	12/14/2006	5/3/2011	4/27/2011	CMR-24