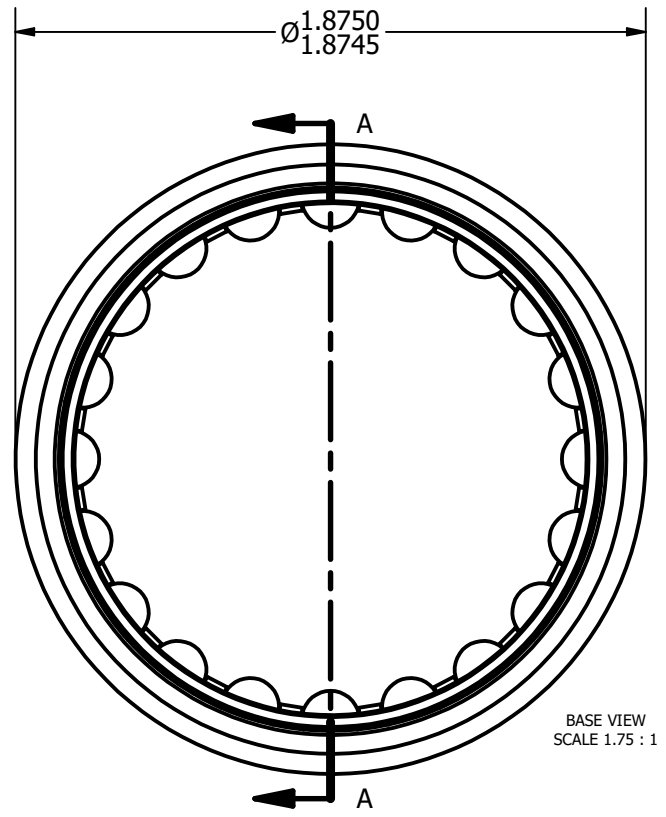
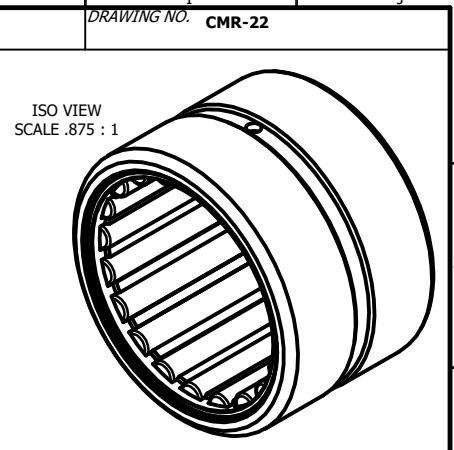


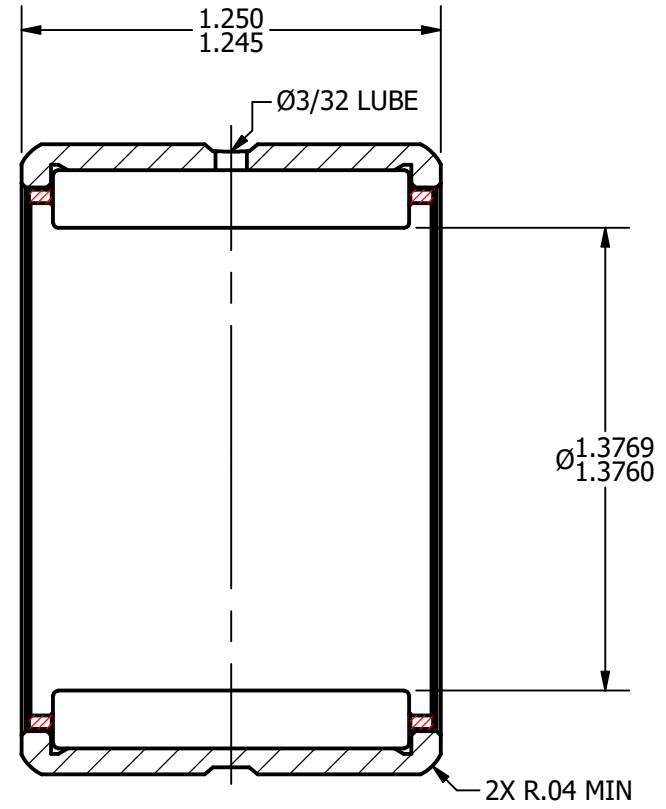
LOAD RATINGS	
RATING	Lbs
RADIAL BASIC DYNAMIC [C]	12,100
MAXIMUM STATIC CAPACITY [Co]	19,700

NOTES:
 1. BEARING IS SLIGHTLY COATED WITH RUST/CORROSION INHIBITING OIL
 2. OUTER RACE HAS BLACK OXIDE ON ALL EXPOSED SURFACES

MS NO.	MS-51961-19	
Recommended Housing Fits		
Fits	Housing Max Ø	Housing Min Ø
Clearance	1.8757	1.8750
Tight Transition	1.8747	1.8740



BASE VIEW
SCALE 1.75 : 1



SECTION A-A
SCALE 1.75 : 1

MATERIAL NOTES:
 OUTER - BEARING STEEL, HEAT TREATED
 CAGE - COLD ROLLED STEEL
 ROLLER - BEARING STEEL, HEAT TREATED

CUSTOMER PART# McGill#MR-22 Torrington#HJ-223020 RBC#SJ7255	.XX = ± .01 .XXX = ± .005 .XXXX = ± .0005 ANGLES = ± 1' INCH [METRIC] FRACTION = ± 1/32
CHANGE NOTE:	

CARTER MANUFACTURING IS NOT RESPONSIBLE FOR TYPOGRAPHICAL ERRORS	
REVISION	
A	AUTHOR. BY DB
REV. BY SGW	DATE 5/3/2011

CARTER MANUFACTURING CO., INC.					
GRAND HAVEN, MICHIGAN 49417					
PART NAME: ASSEMBLY			SHEET 1 OF 2		
SALES	MATERIAL	CHK'D BY	DRAWN BY	AUTHOR. BY	REV. BY
KR	NOTED	MD	SGW	DB	SGW
DATE	DRAWING NO.	DATE	DATE	DATE	DATE
4/18/2011	CMR-22	5/3/2011	4/18/2011	5/3/2011	4/18/2011