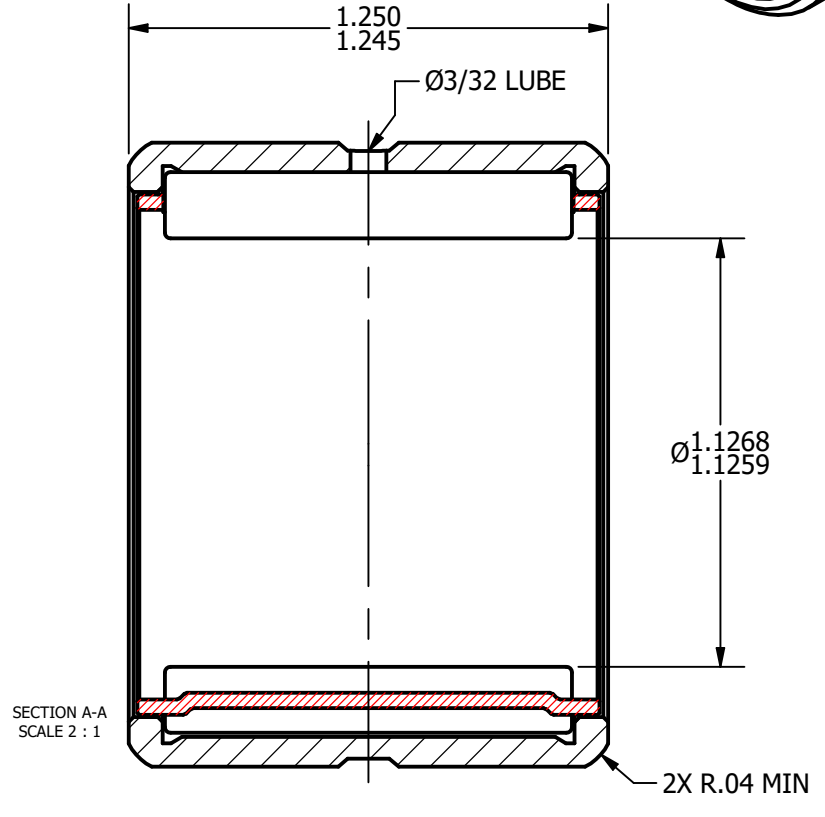
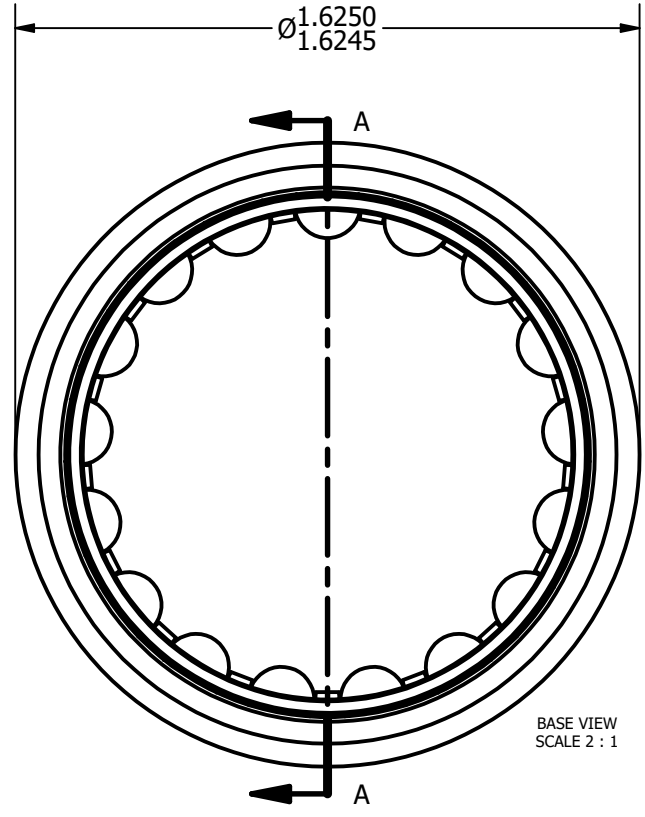
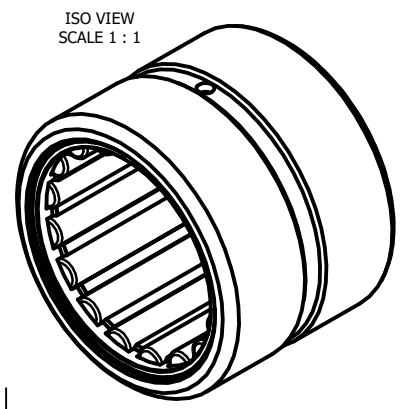


LOAD RATINGS	
RATING	Lbs
RADIAL BASIC DYNAMIC [C]	10,900
MAXIMUM STATIC CAPACITY [Co]	16,300

NOTES:  
 1. BEARING IS LIGHTLY COATED WITH RUST/CORROSION INHIBITING OIL  
 2. OUTER RACE HAS BLACK OXIDE ON ALL EXPOSED SURFACES

MS NO.	MS-51961-12	
Recommended Housing Fits		
Fit	Housing Max Ø	Housing Min Ø
Clearance	1.6257	1.6250
Tight Transition	1.6247	1.6240

DRAWING NO. CMR-18



**MATERIAL NOTES:**  
 OUTER - BEARING STEEL, HEAT TREATED  
 CAGE - COLD ROLLED STEEL  
 ROLLER - BEARING STEEL, HEAT TREATED

CUSTOMER PART#  
 McGill#MR-18  
 Torrington#HJ-182620  
 RBC#SJ7215

CHANGE NOTE:

CARTER MANUFACTURING IS NOT RESPONSIBLE FOR TYPOGRAPHICAL ERRORS

REVISION

<b>A</b>	<b>AUTHOR. BY</b>	<b>DRAWN BY</b>	<b>CHK'D BY</b>	<b>SALES</b>	<b>MATERIAL</b>
	DB	SGW	MD	SC	NOTED
<b>REV. BY</b>	<b>DATE</b>	<b>DATE</b>	<b>DATE</b>	<b>DATE</b>	<b>DRAWING NO.</b>
SGW	4/15/2011	4/15/2011	4/15/2011	4/15/2011	CMR-18

**CARTER MANUFACTURING CO., INC.**  
 GRAND HAVEN, MICHIGAN 49417

PART NAME: ASSEMBLY SHEET 1 OF 2