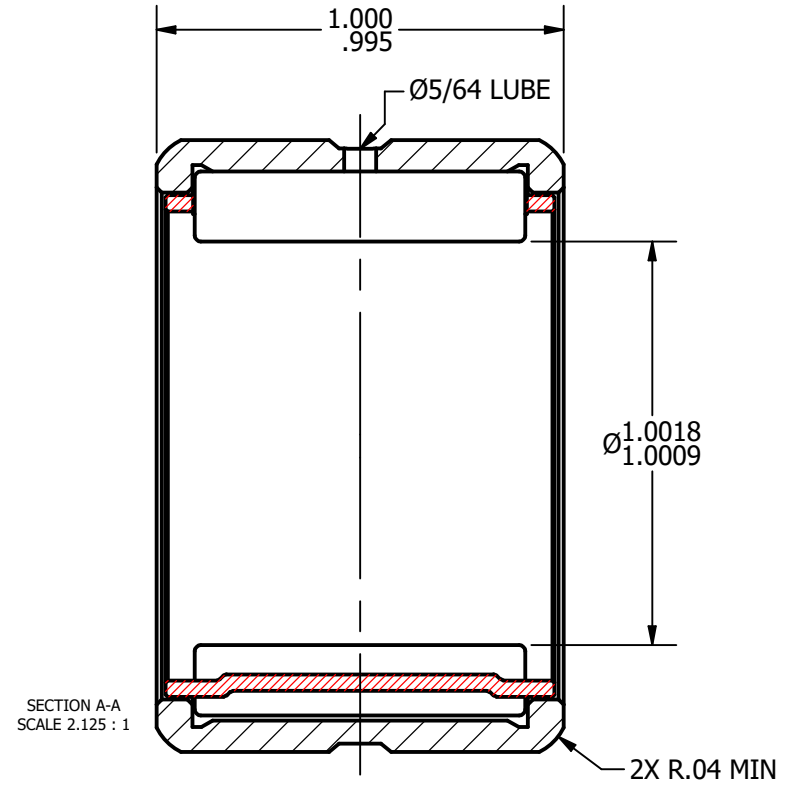
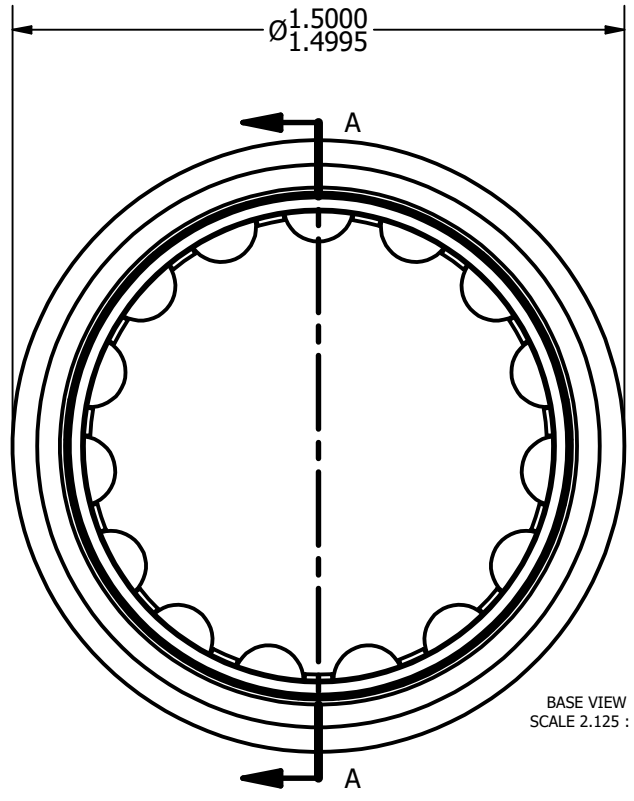
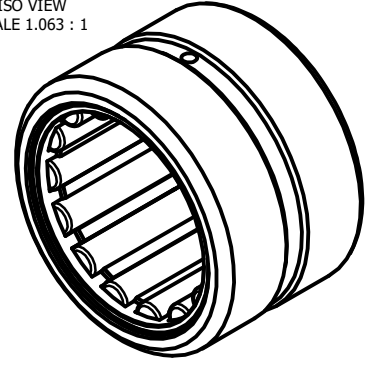


| LOAD RATINGS                 |        |
|------------------------------|--------|
| RATING                       | Lbs    |
| RADIAL BASIC DYNAMIC [C]     | 8,000  |
| MAXIMUM STATIC CAPACITY [Co] | 10,600 |

NOTES:  
 1. BEARING IS LIGHTLY COATED WITH RUST/CORROSION INHIBITING OIL  
 2. OUTER RACE HAS BLACK OXIDE ON ALL EXPOSED SURFACES

|                          |               |               |
|--------------------------|---------------|---------------|
| MS NO.                   | MS-51961-9    |               |
| Recommended Housing Fits |               |               |
| Fit                      | Housing Max Ø | Housing Min Ø |
| Clearance                | 1.5007        | 1.5000        |
| Tight Transition         | 1.4997        | 1.4990        |

ISO VIEW  
 SCALE 1.063 : 1



**MATERIAL NOTES:**  
 OUTER - BEARING STEEL, HEAT TREATED  
 CAGE - COLD ROLLED STEEL  
 ROLLER - BEARING STEEL, HEAT TREATED

|  |  |
|--|--|
| CUSTOMER PART#<br>McGill#MR-16<br>Torrington#HJ-162416<br>RBC#SJ7194 | .XX = ± .01<br>.XXX = ± .005<br>.XXXX = ± .0005<br>ANGLES = ± 1'<br>INCH [METRIC]<br>FRACTION = ± 1/32 |
| CHANGE NOTE:   |  |

|  |                          |
|--|--------------------------|
| CARTER MANUFACTURING IS NOT RESPONSIBLE FOR TYPOGRAPHICAL ERRORS |                          |
| REVISION   |                          |
| <b>A</b>   | <b>AUTHOR. BY</b><br>DB  |
| <b>REV. BY</b><br>SGW  | <b>DATE</b><br>4/15/2011 |

|                                       |                 |                 |              |                 |                    |
|---------------------------------------|-----------------|-----------------|--------------|-----------------|--------------------|
| <b>CARTER MANUFACTURING CO., INC.</b> |                 |                 |              |                 |                    |
| GRAND HAVEN, MICHIGAN 49417           |                 |                 |              |                 |                    |
| PART NAME: ASSEMBLY                   |                 |                 | SHEET 1 OF 2 |                 |                    |
| <b>AUTHOR. BY</b>                     | <b>DRAWN BY</b> | <b>CHK'D BY</b> | <b>SALES</b> | <b>MATERIAL</b> |                    |
| DB                                    | SGW             | MD              | SC           | NOTED           |                    |
| <b>REV. BY</b>                        | <b>DATE</b>     | <b>DATE</b>     | <b>DATE</b>  | <b>DATE</b>     | <b>DRAWING NO.</b> |
| SGW                                   | 4/15/2011       | 4/14/2011       | 4/15/2011    | 4/14/2011       | CMR-16             |