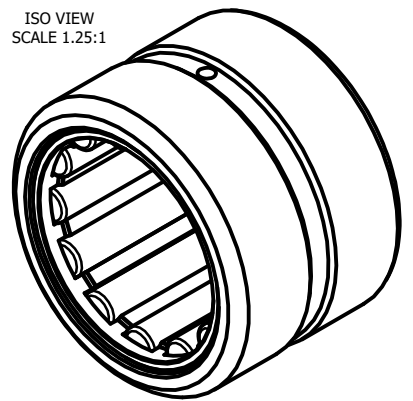


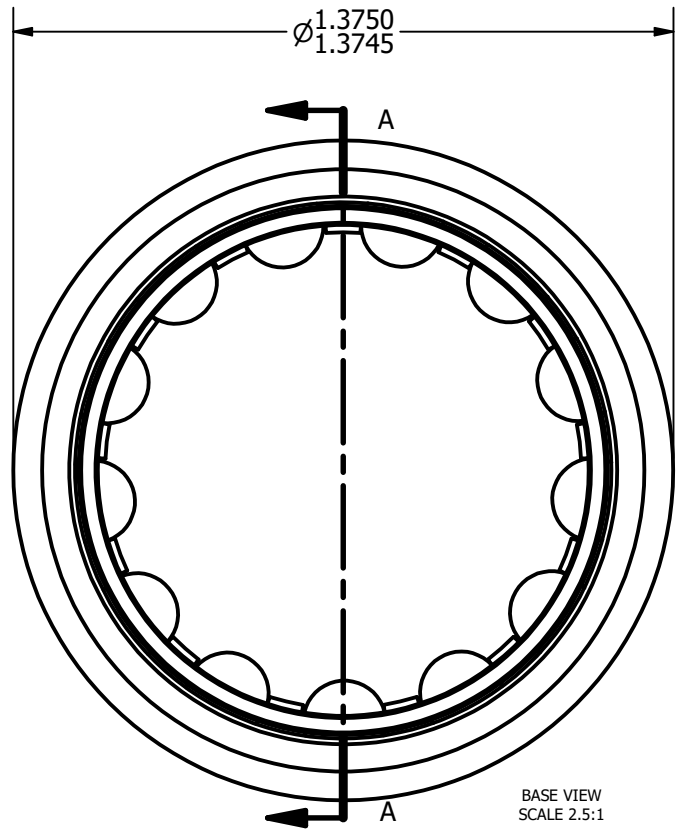
LOAD RATINGS	
RATING	Lbs
RADIAL BASIC DYNAMIC [C]	7,240
MAXIMUM STATIC CAPACITY [Co]	9,000

MS NO. <b>MS-51961-6</b>		WISIV NO.	
Recommended Housing Fits			
Fit	Housing Max Ø	Housing Min Ø	
Clearance	1.3757	1.3750	
Tight Transition	1.3747	1.3740	

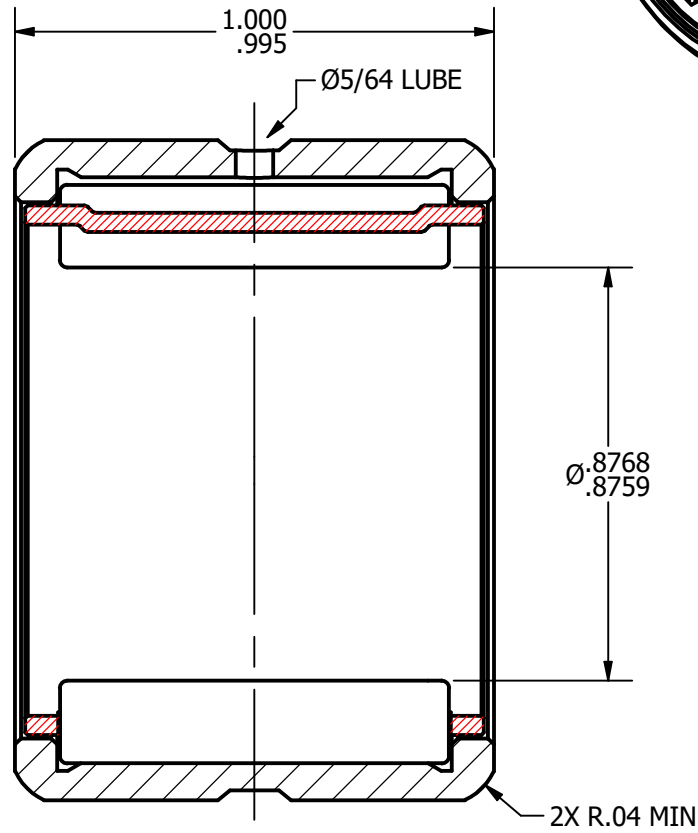
DRAWING NO. **CMR-14**



NOTES:  
 1. BEARING IS LIGHTLY COATED WITH RUST/CORROSION INHIBITING OIL  
 2. OUTER RACE HAS BLACK OXIDE ON ALL EXPOSED SURFACES



BASE VIEW  
SCALE 2.5:1



SECTION A-A  
SCALE 2.5:1

**MATERIAL NOTES:**  
 OUTER - BEARING STEEL, HEAT TREATED  
 CAGE - COLD ROLLED STEEL  
 ROLLER - BEARING STEEL, HEAT TREATED

CUSTOMER PART#  
 McGill#MR-14  
 Torrington#HJ-142216  
 RBC#SJ 7174

CHANGE NOTE:

.XX = ± .01  
 .XXX = ± .005  
 .XXXX = ± .0005  
 ANGLES = ± 1'  
 INCH [METRIC]  
 FRACTION = ± 1/32

CARTER MANUFACTURING IS NOT RESPONSIBLE FOR TYPOGRAPHICAL ERRORS

REVISION

<b>B</b>	AUTHOR. BY	DRAWN BY	CHK'D BY	SALES	MATERIAL
	DB	SGW	MD	SC	NOTED
	REV. BY	DATE	DATE	DATE	DRAWING NO.
	SGW	4/14/2011	12/18/2008	4/14/2011	4/13/2011

**CARTER MANUFACTURING CO., INC.**  
 GRAND HAVEN, MICHIGAN 49417

PART NAME: **ASSEMBLY** SHEET 1 OF 2