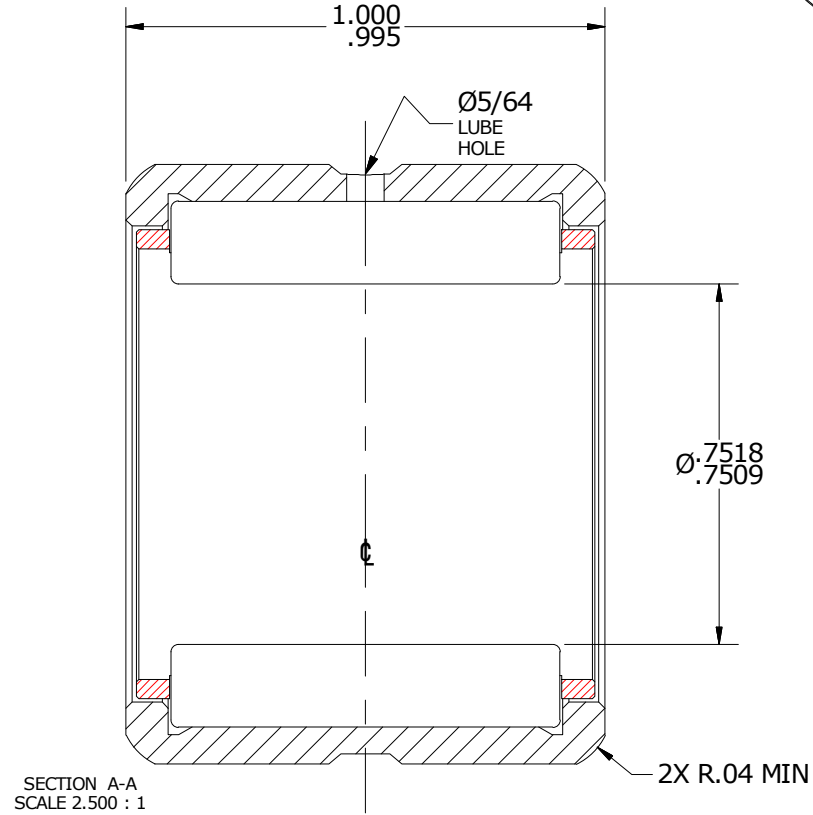
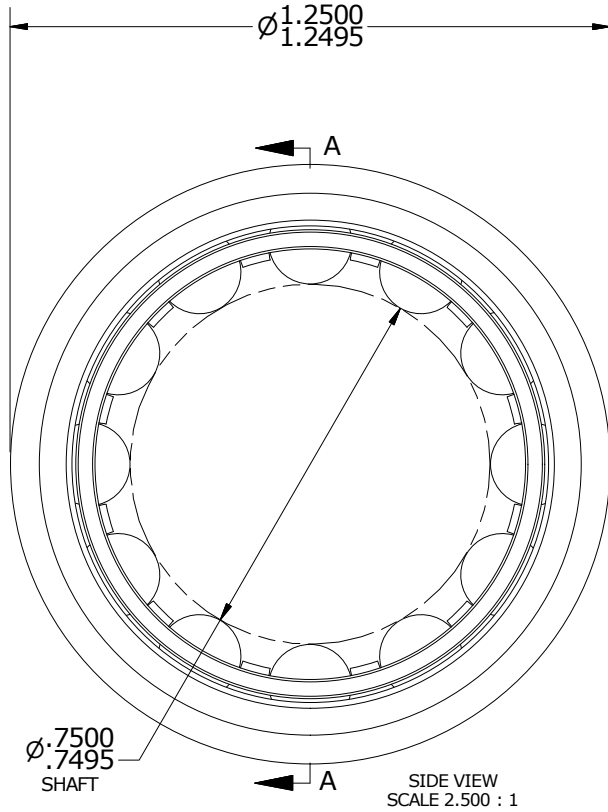
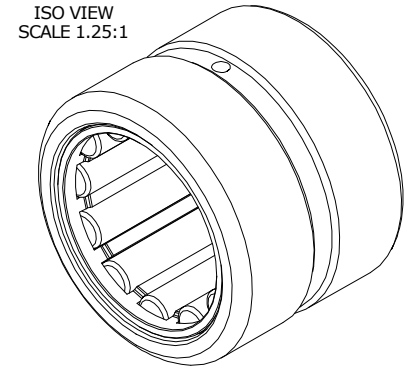


LOAD RATINGS	
RATING	Lbs
RADIAL BASIC DYNAMIC [C]	6,800
MAXIMUM STATIC CAPACITY [Co]	8,100

- NOTES:
 1. BEARING IS LIGHTLY COATED WITH RUST/CORROSION INHIBITING OIL
 2. OUTER RACE HAS BLACK OXIDE ON ALL EXPOSED SURFACES



Recommended Housing Fits		
Fit	Housing Max \varnothing	Housing Min \varnothing
Clearance	1.2507	1.2500
Tight Transition	1.2497	1.2490

MATERIAL NOTES:
 OUTER - BEARING STEEL, HEAT TREATED
 CAGE - STEEL
 NEEDLE ROLLER(S) - BEARING STEEL, HEAT TREATED

CUSTOMER PART#
 McGill#MR-12
 Torrington#HJ-122016
 RBC#SJ7154

XX = ± .01
 XXX = ± .005
 XXXX = ± .0005
 ANGLES = ± 1'
 INCH [METRIC]
 FRACTION = ± 1/32

CARTER MANUFACTURING IS NOT RESPONSIBLE FOR TYPOGRAPHICAL ERRORS

CARTER MANUFACTURING CO., INC.
 GRAND HAVEN, MICHIGAN 49417

ENGINEERING CHANGE ORDER NOTE

REVISION		PART NAME: ASSEMBLY			PRODUCT TYPE: CMR	
D	AUTHOR BY DB	DRAWN BY SGW	CHK'D BY MD	SALES KR	MATERIAL NOTED	
REVISION BY SGW	DATE 2/22/2011	DATE 12/14/2006	DATE 2/22/2011	DATE 2/22/2011	SHEET 1 OF 2	