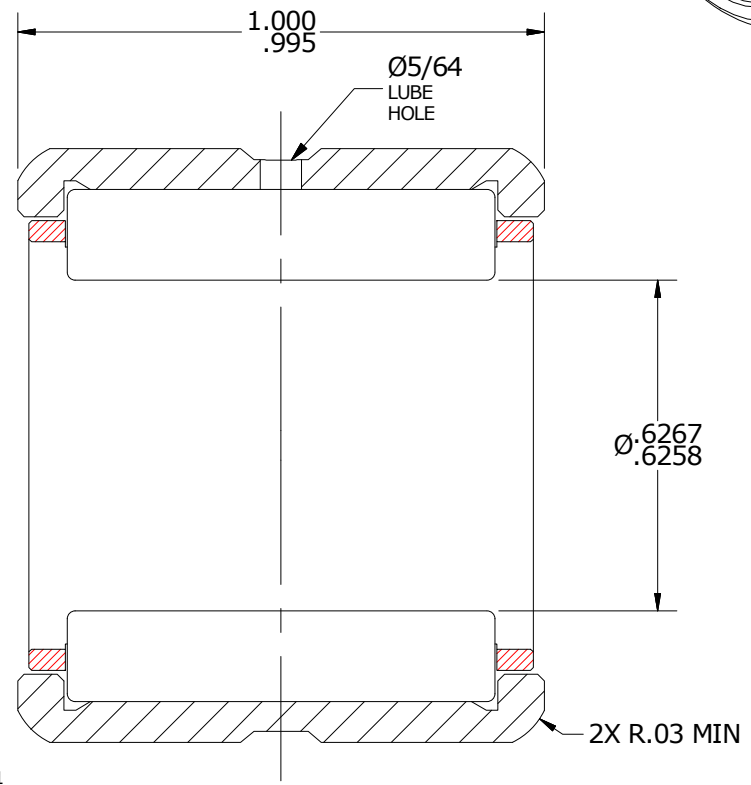
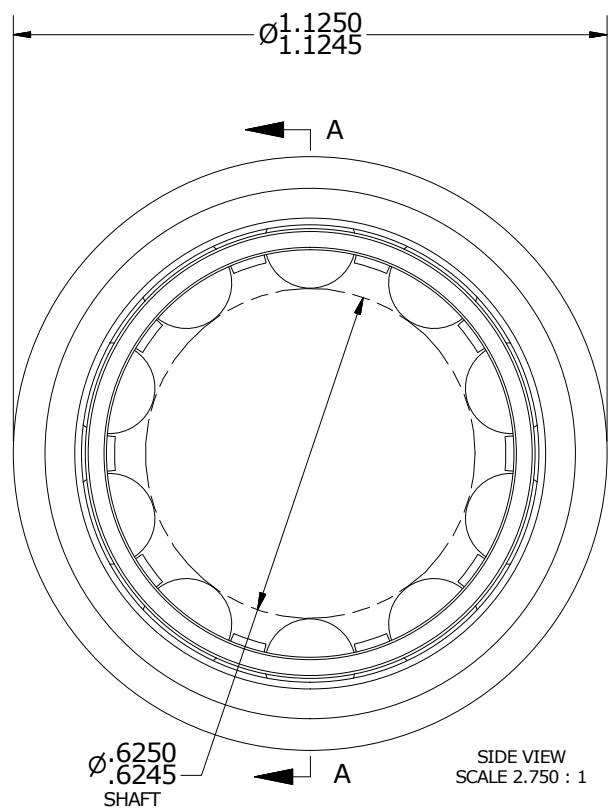
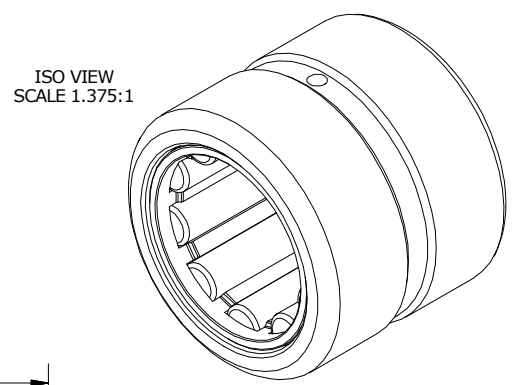


LOAD RATINGS	
RATING	Lbs
RADIAL BASIC DYNAMIC [C]	5,930
MAXIMUM STATIC CAPACITY [Co]	6,500

- NOTES:  
 1. BEARING IS LIGHTLY COATED WITH RUST/CORROSION INHIBITING OIL  
 2. OUTER RACE HAS BLACK OXIDE ON ALL EXPOSED SURFACES



Recommended Housing Fits		
Fit	Housing Max Ø	Housing Min Ø
Clearance	1.1257	1.1250
Tight Transition	1.1247	1.1240

MATERIAL NOTES:  
 OUTER RING - BEARING STEEL, HEAT TREATED  
 CAGE - STEEL  
 NEEDLE ROLLER(S) - BEARING STEEL, HEAT TREATED

CUSTOMER PART# McGill#MR-10 RBC#SJ 7134	XX = ± .01 XXX = ± .005 XXXX = ± .0005 ANGLES = ± 1' INCH [METRIC] FRACTION = ± 1/32
ENGINEERING CHANGE ORDER NOTE	

CARTER MANUFACTURING IS NOT RESPONSIBLE FOR TYPOGRAPHICAL ERRORS		<b>CARTER MANUFACTURING CO., INC.</b> GRAND HAVEN, MICHIGAN 49417			
REVISION		PART NAME: ASSEMBLY		PRODUCT TYPE: CMR	
<b>B</b>	AUTHOR BY DB	DRAWN BY SGW	CHK'D BY MD	SALES KR	MATERIAL NOTED
REVISION BY SGW	DATE 2/18/2011	DATE 12/13/2006	DATE 2/18/2011	DATE 2/18/2011	SHEET 1 OF 2