

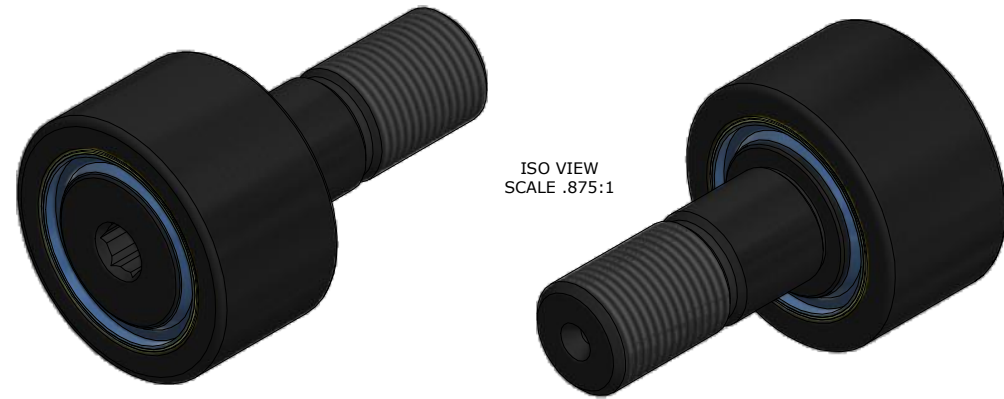
LOAD RATINGS		
RATING	lbf	Newtons
RADIAL BASIC DYNAMIC	8,200	36,475
MAXIMUM STATIC CAPACITY	10,500	46,706

RECOMMENDED MOUNTING HOLE Ø		
Limit	Inch	mm
MIN	.7498	19.045
MAX	.7505	19.063

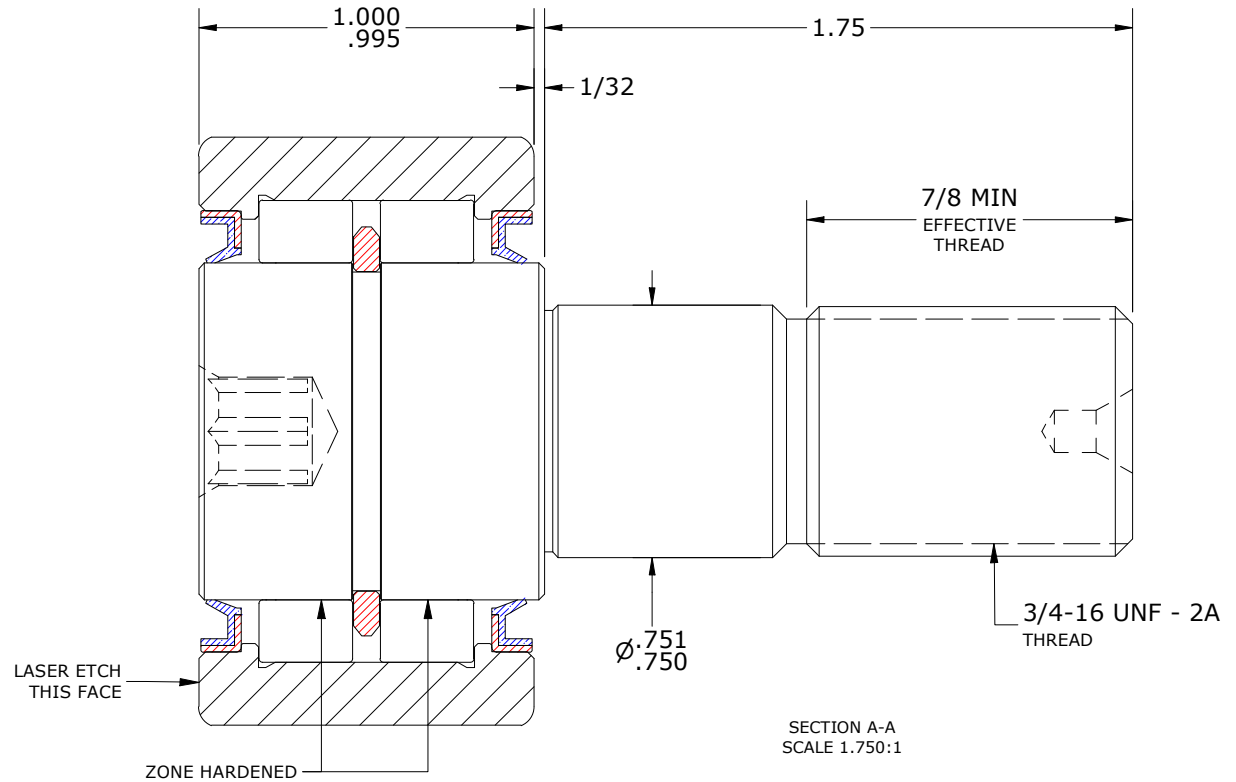
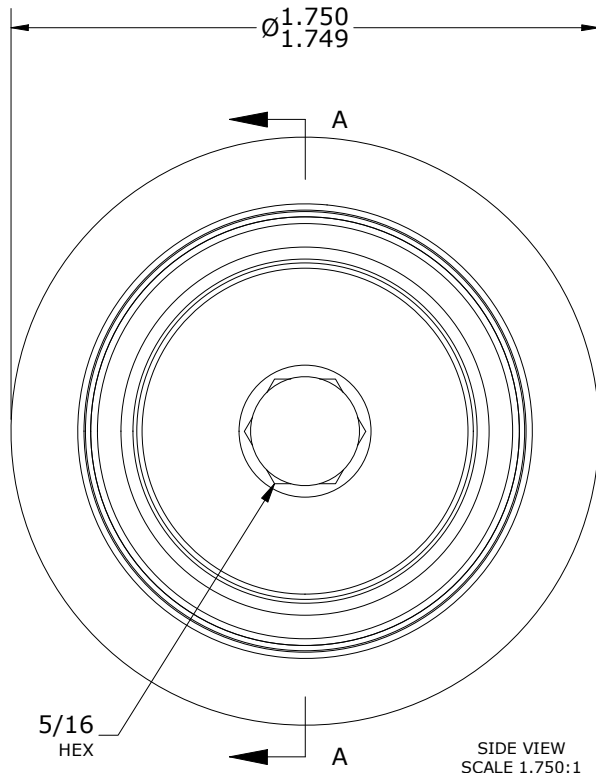
MAXIMUM CLAMPING TORQUE**		
Thread Type	Inch Lbs	Nm
LUBRICATED	625	70.5

NOTES:

1. BEARING IS PACKED WITH NLGI GRADE 2, LITHIUM BASED GREASE (UNLESS OTHERWISE SPECIFIED)
2. ALL EXPOSED SURFACES AS MOUNTED HAVE BLACK OXIDE
3. LIMITING SPEED:
  - A. GREASE = 4,700 RPM
4. CUSTOM LASER ETCHING UPON REQUEST



ISO VIEW  
SCALE .875:1



\*\*TORQUE SPECIFICATION IS BASED ON LUBRICATED THREADS, IF USING DRY THREADS DOUBLE TORQUE VALUE

MATERIAL NOTES:

- OUTER RING - BEARING STEEL, HEAT TREATED
- STUD - BEARING STEEL, ZONE HARDENED
- NEEDLE ROLLER(S) - BEARING STEEL, HEAT TREATED
- RETAINING RING - BEARING STEEL, HEAT TREATED
- SEAL(S) - VB TYPE OIL SEAL

CUSTOMER PART#

XX = ± .01  
XXX = ± .005  
XXXX = ± .0005  
ANGLES = ± 1'  
INCH [METRIC]  
FRACTION = ± 1/32

CARTER MANUFACTURING IS  
NOT RESPONSIBLE FOR  
TYPOGRAPHICAL ERRORS

**CARTER MANUFACTURING CO., INC.**

GRAND HAVEN, MICHIGAN 49417

ENGINEERING CHANGE ORDER NOTE

REVISION

PART NAME: ASSEMBLY

PRODUCT TYPE: CDR

A

AUTHOR BY

DRAWN BY

CHK'D BY

SALES

MATERIAL

HG

SGW

MD

NC

NOTED

REVISION BY

DATE

DATE

DATE

DATE

SHEET

SGW

4/30/2021

4/26/2021

4/29/2021

4/30/2021

1 OF 2