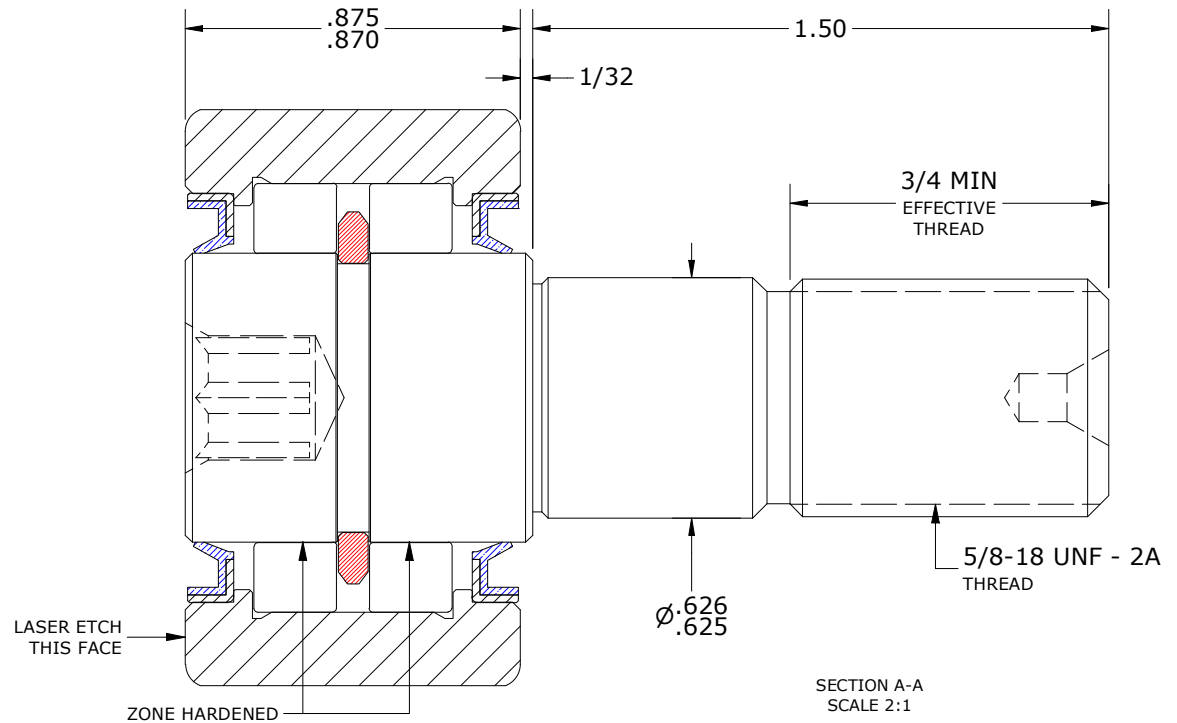
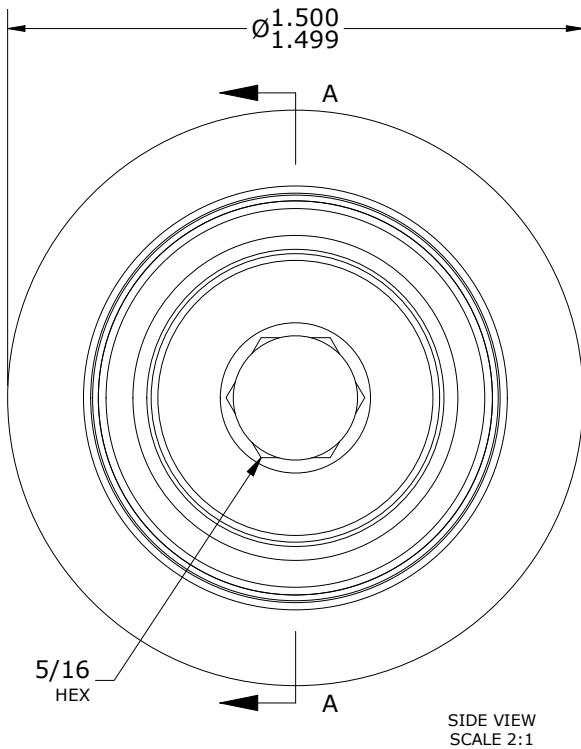


LOAD RATINGS		
RATING	lbf	Newtons
RADIAL BASIC DYNAMIC	6,200	27,579
MAXIMUM STATIC CAPACITY	7,000	31,138

RECOMMENDED MOUNTING HOLE Ø		
Limit	Inch	mm
MIN	.6248	15.870
MAX	.6255	15.888

MAXIMUM CLAMPING TORQUE**		
Thread Type	Inch Lbs	Nm
LUBRICATED	325	36.5

- NOTES:
1. BEARING IS PACKED WITH NLGI GRADE 2, LITHIUM BASED GREASE (UNLESS OTHERWISE SPECIFIED)
 2. ALL EXPOSED SURFACES AS MOUNTED HAVE BLACK OXIDE
 3. LIMITING SPEED:
A. GREASE = 6,200 RPM
 4. CUSTOM LASER ETCHING UPON REQUEST



**TORQUE SPECIFICATION IS BASED ON LUBRICATED THREADS, IF USING DRY THREADS DOUBLE TORQUE VALUE

MATERIAL NOTES:

- OUTER RING - BEARING STEEL, HEAT TREATED
- STUD - BEARING STEEL, ZONE HARDENED
- NEEDLE ROLLER(S) - BEARING STEEL, HEAT TREATED
- RETAINING RING - BEARING STEEL, HEAT TREATED
- SEAL(S) - VB TYPE OIL SEAL

CUSTOMER PART#	XX = ± .01 XXX = ± .005 XXXX = ± .0005 ANGLES = ± 1' INCH [METRIC] FRACTION = ± 1/32
ENGINEERING CHANGE ORDER NOTE	

CARTER MANUFACTURING IS NOT RESPONSIBLE FOR TYPOGRAPHICAL ERRORS

CARTER MANUFACTURING CO., INC.
GRAND HAVEN, MICHIGAN 49417

REVISION		PART NAME: ASSEMBLY		PRODUCT TYPE: CDR	
A	AUTHOR BY	DRAWN BY	CHK'D BY	SALES	MATERIAL
REVISION BY	DATE	DATE	DATE	DATE	SHEET
SGW	4/30/2021	2/7/2020	4/29/2021	4/30/2021	1 OF 2